

Anti-EGFR antibody [E114] ab32562

リコンビナント **RabMAb**

12 References 画像数 11

製品の概要

製品名	Anti-EGFR antibody [E114]
製品の詳細	Rabbit monoclonal [E114] to EGFR
由来種	Rabbit
特異性	This product yielded a strong signal in western blot using A431 (human squamous carcinoma) lysate which naturally overexpresses the EGFR protein. Western blot conditions may need to be optimised for cell lines and tissues that express lower levels of endogenous EGFR.
アプリケーション	適用あり: IHC-P, WB, IP, ICC/IF, Flow Cyt (Intra)
種交差性	交差種: Mouse, Rat, Human
免疫原	Synthetic peptide within Human EGFR (C terminal). The exact sequence is proprietary.
エピトープ	ab32562 reacts with an epitope located in the C terminal region of EGF receptor.
ポジティブ・コントロール	WB: HeLa and A431 cell lysates. IHC-P: human cervical carcinoma, mouse skin, rat skin ICC/IF: A431 cells. IP: HeLa cell lysate.
特記事項	<p>This product is a recombinant monoclonal antibody, which offers several advantages including:</p> <ul style="list-style-type: none"> - High batch-to-batch consistency and reproducibility - Improved sensitivity and specificity - Long-term security of supply - Animal-free production <p>For more information see here.</p> <p>Our RabMAb[®] technology is a patented hybridoma-based technology for making rabbit monoclonal antibodies. For details on our patents, please refer to RabMAb[®] patents.</p> <p>Mouse, Rat: We have preliminary internal testing data to indicate this antibody may not react with these species. Please contact us for more information.</p>

製品の特性

製品の状態	Liquid
保存方法	Shipped at 4°C. Store at +4°C short term (1-2 weeks). Upon delivery aliquot. Store at -20°C. Avoid freeze / thaw cycle.
バッファー	pH: 7.20

	Preservative: 0.01% Sodium azide
	Constituents: 59% PBS, 40% Glycerol, 0.05% BSA
精製度	Protein A purified
ポリ/モノ	モノクローナル
クローン名	E114
アイソタイプ	IgG

アプリケーション

The Abpromise guarantee **Abpromise保証は、次のテスト済みアプリケーションにおけるab32562の使用に適用されます**
 アプリケーションノートには、推奨の開始希釈率がありますが、適切な希釈率につきましてはご検討ください。

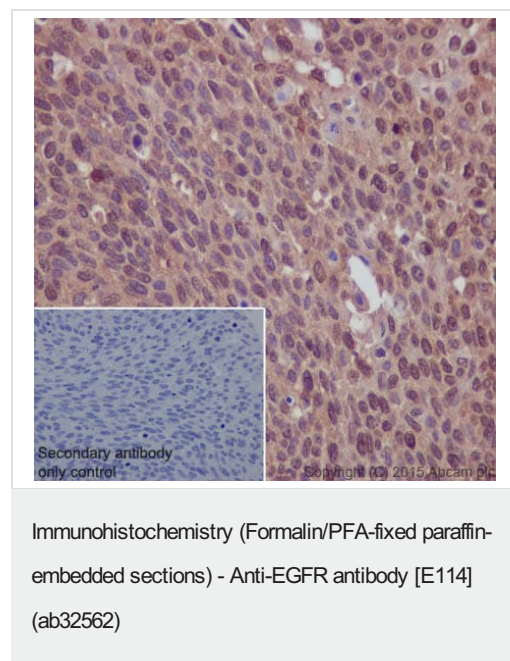
アプリケーション	Abreviews	特記事項
IHC-P		1/100. Perform heat mediated antigen retrieval before commencing with IHC staining protocol. See IHC antigen retrieval protocols .
WB		1/1000 - 1/10000. Predicted molecular weight: 170 kDa. This product yielded a strong signal in western blot using A431 (human squamous carcinoma) lysate which naturally overexpresses the EGFR protein. Western blot conditions may need to be optimised for cell lines and tissues that express lower levels of endogenous EGFR.
IP		1/10 - 1/20.
ICC/IF		1/10 - 1/100.
Flow Cyt (Intra)		Use at an assay dependent concentration. ab172730 - Rabbit monoclonal IgG, is suitable for use as an isotype control with this antibody.

ターゲット情報

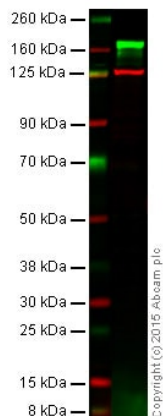
機能	<p>Receptor tyrosine kinase binding ligands of the EGF family and activating several signaling cascades to convert extracellular cues into appropriate cellular responses. Known ligands include EGF, TGFA/TGF-alpha, amphiregulin, epigen/EPGN, BTC/betacellulin, epiregulin/EREG and HBEGF/heparin-binding EGF. Ligand binding triggers receptor homo- and/or heterodimerization and autophosphorylation on key cytoplasmic residues. The phosphorylated receptor recruits adapter proteins like GRB2 which in turn activates complex downstream signaling cascades. Activates at least 4 major downstream signaling cascades including the RAS-RAF-MEK-ERK, PI3 kinase-AKT, PLCgamma-PKC and STATs modules. May also activate the NF-kappa-B signaling cascade. Also directly phosphorylates other proteins like RGS16, activating its GTPase activity and probably coupling the EGF receptor signaling to the G protein-coupled receptor signaling. Also phosphorylates MUC1 and increases its interaction with SRC and CTNNB1/beta-catenin.</p> <p>Isoform 2 may act as an antagonist of EGF action.</p>
----	---

組織特異性	Ubiquitously expressed. Isoform 2 is also expressed in ovarian cancers.
関連疾患	Lung cancer Inflammatory skin and bowel disease, neonatal, 2
配列類似性	Belongs to the protein kinase superfamily. Tyr protein kinase family. EGF receptor subfamily. Contains 1 protein kinase domain.
翻訳後修飾	Phosphorylation at Ser-695 is partial and occurs only if Thr-693 is phosphorylated. Phosphorylation at Thr-678 and Thr-693 by PRKD1 inhibits EGF-induced MAPK8/JNK1 activation. Dephosphorylation by PTPRJ prevents endocytosis and stabilizes the receptor at the plasma membrane. Autophosphorylation at Tyr-1197 is stimulated by methylation at Arg-1199 and enhances interaction with PTPN6. Autophosphorylation at Tyr-1092 and/or Tyr-1110 recruits STAT3. Dephosphorylated by PTPN1 and PTPN2. Monoubiquitinated and polyubiquitinated upon EGF stimulation; which does not affect tyrosine kinase activity or signaling capacity but may play a role in lysosomal targeting. Polyubiquitin linkage is mainly through 'Lys-63', but linkage through 'Lys-48', 'Lys-11' and 'Lys-29' also occurs. Deubiquitination by OTUD7B prevents degradation. Ubiquitinated by RNF115 and RNF126. Methylated. Methylation at Arg-1199 by PRMT5 stimulates phosphorylation at Tyr-1197.
細胞内局在	Secreted and Cell membrane. Endoplasmic reticulum membrane. Golgi apparatus membrane. Nucleus membrane. Endosome. Endosome membrane. Nucleus. In response to EGF, translocated from the cell membrane to the nucleus via Golgi and ER. Endocytosed upon activation by ligand. Colocalized with GPER1 in the nucleus of estrogen agonist-induced cancer-associated fibroblasts (CAF).

画像



Immunohistochemistry (Formalin/PFA-fixed paraffin-embedded sections) analysis of human cervical carcinoma tissue labelling EGFR with purified ab32562 at a dilution of 1/100. Heat mediated antigen retrieval was performed using Tris/EDTA buffer pH 9. **ab97051**, a HRP-conjugated goat anti-rabbit IgG (H+L) was used as the secondary antibody (1/500). Negative control using PBS instead of primary antibody. Counterstained with hematoxylin.



Western blot - Anti-EGFR antibody [E114]
(ab32562)

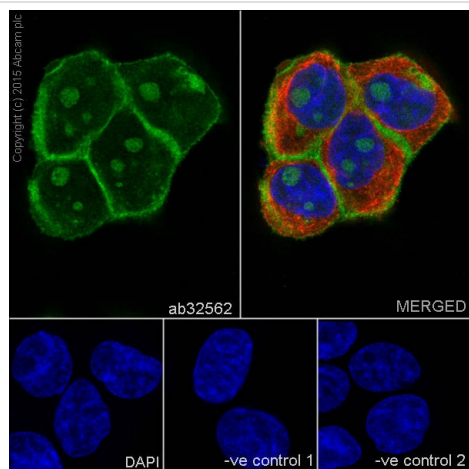
Anti-EGFR antibody [E114] (ab32562) at 1/10000 dilution + A431
at 20 µg

Performed under reducing conditions.

Predicted band size: 170 kDa

This blot was produced using a 4-12% Bis-tris gel under the MOPS buffer system. The gel was run at 200V for 50 minutes before being transferred onto a Nitrocellulose membrane at 30V for 70 minutes. The membrane was then blocked for an hour before being incubated with ab32562 overnight at 4°C in the presence of loading control **ab18058** Mouse monoclonal [SPM227] to Vinculin diluted 1:10000. Antibody binding was detected using IR-labelled goat anti-Rabbit Ab at a 1:10,000 dilution for one hour at room temperature before imaging.

This product yielded a strong signal in western blot using A431 (human squamous carcinoma) lysate which naturally overexpresses the EGFR protein. Western blot conditions may need to be optimised for cell lines and tissues that express lower levels of endogenous EGFR.

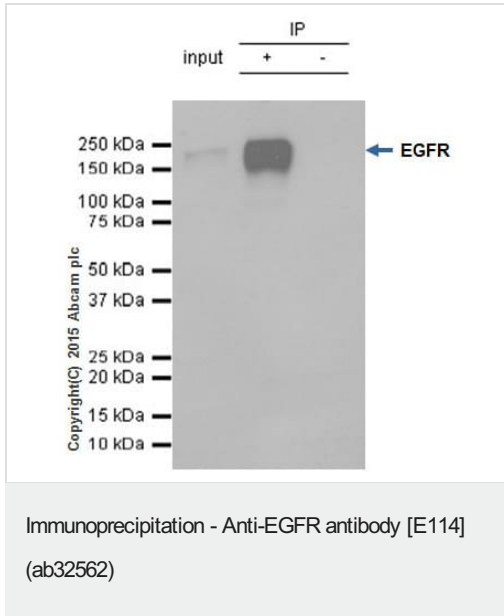


Immunocytochemistry/ Immunofluorescence - Anti-EGFR antibody [E114] (ab32562)

Immunocytochemistry/Immunofluorescence analysis of A431 cells labelling EGFR with purified ab32562 at 1/100. Cells were fixed with 4% paraformaldehyde and permeabilized with 0.1% Triton X-100. **ab150077**, an Alexa Fluor® 488-conjugated goat anti-rabbit IgG (1/1000) was used as the secondary antibody. DAPI (blue) was used as the nuclear counterstain. **ab7291**, a mouse anti-tubulin (1/1000) and **ab150120**, an Alexa Fluor® 594-conjugated goat anti-mouse IgG (1/1000) were also used.

Control 1: primary antibody (1/100) and secondary antibody, **ab150120**, an Alexa Fluor® 594-conjugated goat anti-mouse IgG (1/1000).

Control 2: **ab7291** (1/1000) and secondary antibody, **ab150077**, an Alexa Fluor® 488-conjugated goat anti-rabbit IgG (1/1000).



ab32562 (purified) at 1/20 immunoprecipitating EGFR in HeLa whole cell lysate.

Lane 1 (input): HeLa whole cell lysate (10µg)

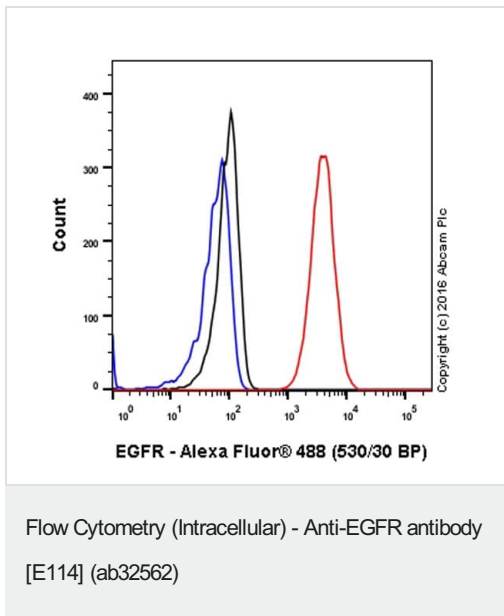
Lane 2 (+): ab32562 + HeLa whole cell lysate.

Lane 3 (-): Rabbit monoclonal IgG (**ab172730**) instead of ab32562 in HeLa whole cell lysate.

For western blotting, **ab131366** VeriBlot for IP (HRP) was used for detection (1/10000).

Blocking buffer and concentration: 5% NFDM/TBST.

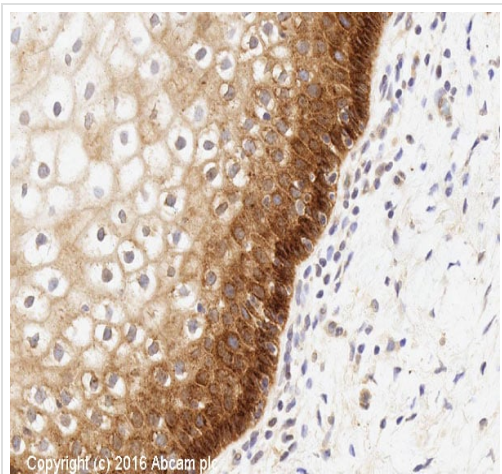
Diluting buffer and concentration: 5% NFDM /TBST.



ab32562 staining EGFR in the human cell line A431 (human epidermoid carcinoma) by intracellular flow cytometry. Cells were fixed with 4% paraformaldehyde and the sample was incubated with the primary antibody at a dilution of 1/20. A goat anti rabbit IgG (Alexa Fluor® 488) at a dilution of 1/2000 was used as the secondary antibody.

Isotype control: Rabbit monoclonal IgG (Black)

Unlabelled control: Cell without incubation with primary antibody and secondary antibody (Blue)

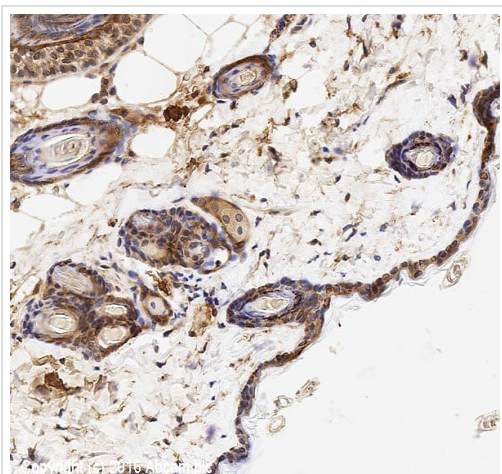


Immunohistochemistry (Formalin/PFA-fixed paraffin-embedded sections) - Anti-EGFR antibody [E114] (ab32562)

IHC image of EGFR staining in human normal cervix formalin fixed paraffin embedded tissue section*, performed on a Leica Bond™ system using the standard protocol F. The section was pre-treated using heat mediated antigen retrieval with sodium citrate buffer (pH6, epitope retrieval solution 1) for 20 mins. The section was then incubated with ab32562, 1in50 dilution, for 15 mins at room temperature and detected using an HRP conjugated compact polymer system. DAB was used as the chromogen. The section was then counterstained with haematoxylin and mounted with DPX.

For other IHC staining systems (automated and non-automated) customers should optimize variable parameters such as antigen retrieval conditions, primary antibody concentration and antibody incubation times.

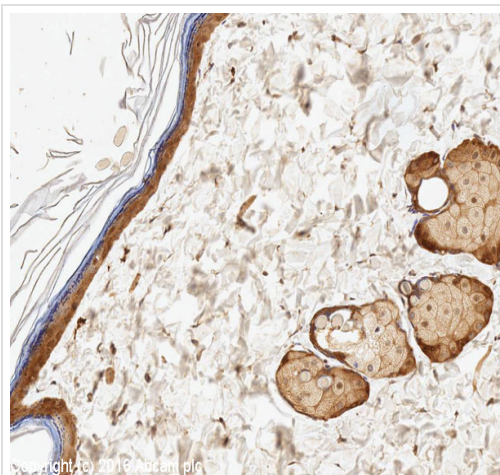
**Tissue obtained from the Human Research Tissue Bank, supported by the NIHR Cambridge Biomedical Research Centre*



Immunohistochemistry (Formalin/PFA-fixed paraffin-embedded sections) - Anti-EGFR antibody [E114] (ab32562)

IHC image of EGFR staining in mouse skin formalin fixed paraffin embedded tissue section, performed on a Leica Bond™ system using the standard protocol B. The section was pre-treated using heat mediated antigen retrieval with sodium citrate buffer (pH6, epitope retrieval solution 1) for 20 mins. The section was then incubated with ab32562, 1in50 dilution, for 15 mins at room temperature. A goat anti-rabbit biotinylated secondary antibody was used to detect the primary, and visualized using an HRP conjugated ABC system. DAB was used as the chromogen. The section was then counterstained with haematoxylin and mounted with DPX.

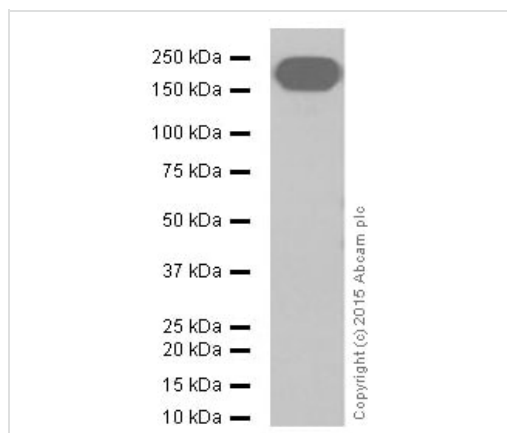
For other IHC staining systems (automated and non-automated) customers should optimize variable parameters such as antigen retrieval conditions, primary antibody concentration and antibody incubation times.



Immunohistochemistry (Formalin/PFA-fixed paraffin-embedded sections) - Anti-EGFR antibody [E114] (ab32562)

IHC image of EGFR staining in rat skin formalin fixed paraffin embedded tissue section, performed on a Leica Bond™ system using the standard protocol F. The section was pre-treated using heat mediated antigen retrieval with sodium citrate buffer (pH6, epitope retrieval solution 1) for 20 mins. The section was then incubated with ab32562, 1 in 50 dilution, for 15 mins at room temperature and detected using an HRP conjugated compact polymer system. DAB was used as the chromogen. The section was then counterstained with haematoxylin and mounted with DPX.

For other IHC staining systems (automated and non-automated) customers should optimize variable parameters such as antigen retrieval conditions, primary antibody concentration and antibody incubation times.



Western blot - Anti-EGFR antibody [E114] (ab32562)

Anti-EGFR antibody [E114] (ab32562) at 1/10000 dilution (purified) + A431 whole cell lysate at 10 µg

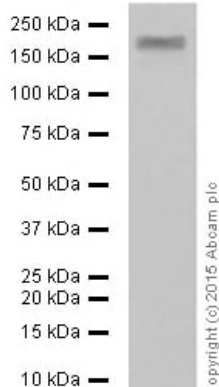
Secondary

Goat Anti-Rabbit IgG H&L (HRP) ([ab97051](#)) at 1/100000 dilution

Predicted band size: 170 kDa

Observed band size: 170 kDa

Blocking and dilution buffer: 5% NFDM /TBST.



Western blot - Anti-EGFR antibody [E114]
(ab32562)

Anti-EGFR antibody [E114] (ab32562) at 1/10000 dilution (purified)
+ HeLa whole cell lysate at 10 µg

Secondary

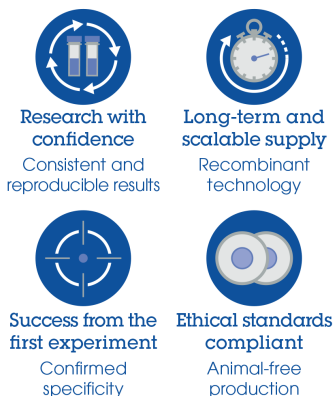
Goat Anti-Rabbit IgG H&L (HRP) ([ab97051](#)) at 1/100000 dilution

Predicted band size: 170 kDa

Observed band size: 170 kDa

Blocking and dilution buffer: 5% NFDM /TBST.

Why choose a recombinant antibody?



Anti-EGFR antibody [E114] (ab32562)

Please note: All products are "FOR RESEARCH USE ONLY. NOT FOR USE IN DIAGNOSTIC PROCEDURES"

Our Abpromise to you: Quality guaranteed and expert technical support

- Replacement or refund for products not performing as stated on the datasheet
- Valid for 12 months from date of delivery
- Response to your inquiry within 24 hours
- We provide support in Chinese, English, French, German, Japanese and Spanish
- Extensive multi-media technical resources to help you
- We investigate all quality concerns to ensure our products perform to the highest standards

If the product does not perform as described on this datasheet, we will offer a refund or replacement. For full details of the Abpromise, please visit <https://www.abcam.co.jp/abpromise> or contact our technical team.

Terms and conditions

- Guarantee only valid for products bought direct from Abcam or one of our authorized distributors