

Anti-EG-VEGF antibody ab42802

画像数 1

製品の概要

| | |
|----------|---|
| 製品名 | Anti-EG-VEGF antibody |
| 製品の詳細 | Rabbit polyclonal to EG-VEGF |
| 由来種 | Rabbit |
| 特異性 | The polyclonal antibody reacts specifically with human EG-VEGF. |
| アプリケーション | 適用あり: IHC-P |
| 種交差性 | 交差種: Human |
| 免疫原 | Synthetic peptide corresponding to Human EG-VEGF (N terminal). (Peptide available as ab206194) |
| 特記事項 | <p>The Life Science industry has been in the grips of a reproducibility crisis for a number of years. Abcam is leading the way in addressing this with our range of recombinant monoclonal antibodies and knockout edited cell lines for gold-standard validation. Please check that this product meets your needs before purchasing.</p> <p>If you have any questions, special requirements or concerns, please send us an inquiry and/or contact our Support team ahead of purchase. Recommended alternatives for this product can be found below, along with publications, customer reviews and Q&As</p> |

製品の特性

| | |
|--------|--|
| 製品の状態 | Liquid |
| 保存方法 | Shipped at 4°C. Store at +4°C short term (1-2 weeks). Upon delivery aliquot. Store at -20°C long term. |
| バッファー | Constituent: Whole serum |
| 精製度 | Whole antiserum |
| ポリ/モノ | ポリクローナル |
| アイソタイプ | IgG |

アプリケーション

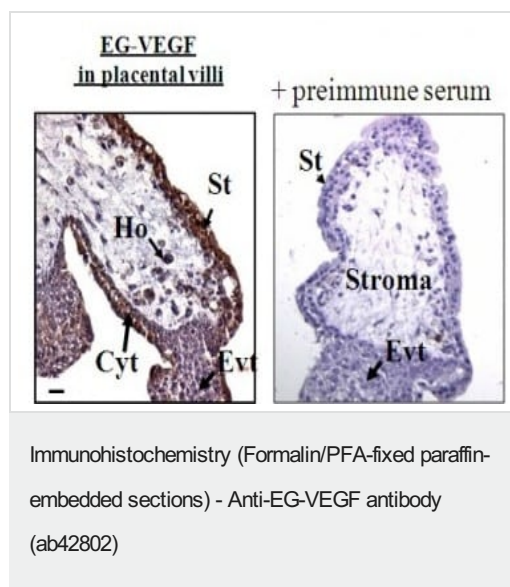
The Abpromise guarantee **Abpromise保証は、**次のテスト済みアプリケーションにおけるab42802の使用に適用されます
アプリケーションノートには、推奨の開始希釈率がありますが、適切な希釈率につきましてはご検討ください。

| アプリケーション | Abreviews | 特記事項 |
|----------|-----------|-------|
| IHC-P | | 1/50. |

ターゲット情報

| | |
|-------|---|
| 機能 | Potently contracts gastrointestinal (GI) smooth muscle. Induces proliferation, migration and fenestration (the formation of membrane discontinuities) in capillary endothelial cells derived from endocrine glands. Has little or no effect on a variety of other endothelial and non-endothelial cell types. Induces proliferation and differentiation, but not migration, of enteric neural crest cells. Directly influences neuroblastoma progression by promoting the proliferation and migration of neuroblastoma cells. Positively regulates PTGS2 expression and prostaglandin synthesis. May play a role in placentation. May play a role in normal and pathological testis angiogenesis. |
| 組織特異性 | Localizes to glandular epithelium, stroma and vascular epithelial cells of first trimester decidua (at protein level). Up-regulated in first trimester decidua when compared with non-pregnant endometrium. Expressed in the steroidogenic glands, ovary, testis, adrenal and placenta. |
| 配列類似性 | Belongs to the AVIT (prokineticin) family. |
| 発生段階 | In adult testis, is strongly expressed only in Leydig cells. In testicular tumors, expressed specifically in Leydig cell tumors (at protein level). Expressed from 14 weeks until birth in fetal testis. |
| 細胞内局在 | Secreted. |

画像



ab42802 at 0.33 µg/ml staining EG-VEGF in tissue of chorionic villi at 9 weeks of gestation. Staining can be observed in Cytotrophoblast (Cyt), Hobfauer cells (Ho), Extravillous trophoblast (Evt) and Syncytiotrophoblast (St). Negative control with preimmune serum shows no staining. Counterstaining performed with haematoxylin.

Please note: All products are "FOR RESEARCH USE ONLY. NOT FOR USE IN DIAGNOSTIC PROCEDURES"

Our Abpromise to you: Quality guaranteed and expert technical support

- Replacement or refund for products not performing as stated on the datasheet

- Valid for 12 months from date of delivery
- Response to your inquiry within 24 hours
- We provide support in Chinese, English, French, German, Japanese and Spanish
- Extensive multi-media technical resources to help you
- We investigate all quality concerns to ensure our products perform to the highest standards

If the product does not perform as described on this datasheet, we will offer a refund or replacement. For full details of the Abpromise, please visit <https://www.abcam.co.jp/abpromise> or contact our technical team.

Terms and conditions

- Guarantee only valid for products bought direct from Abcam or one of our authorized distributors