


Anti-EFHD2/SWS1 antibody ab24368

★★★★★ [1 Abreviews](#) [4 References](#) [画像数 1](#)

製品の概要

製品名	Anti-EFHD2/SWS1 antibody
製品の詳細	Goat polyclonal to EFHD2/SWS1
由来種	Goat
アプリケーション	適用あり: WB
種交差性	交差種: Human 交差が予測される動物種: Mouse, Rat, Cow, Dog 
免疫原	Synthetic peptide corresponding to Human EFHD2/SWS1 aa 230-240 (C terminal). Sequence: (C)AAFKE L QSTFK Run BLAST with Run BLAST with
ポジティブ・コントロール	WB: Human thymus, lymph node and tonsil lysates.
特記事項	<p>The Life Science industry has been in the grips of a reproducibility crisis for a number of years. Abcam is leading the way in addressing this with our range of recombinant monoclonal antibodies and knockout edited cell lines for gold-standard validation. Please check that this product meets your needs before purchasing.</p> <p>If you have any questions, special requirements or concerns, please send us an inquiry and/or contact our Support team ahead of purchase. Recommended alternatives for this product can be found below, along with publications, customer reviews and Q&As</p>

製品の特性

製品の状態	Liquid
保存方法	Shipped at 4°C. Upon delivery aliquot and store at -20°C. Avoid freeze / thaw cycles.
バッファー	pH: 7.30 Preservative: 0.02% Sodium azide Constituents: Tris buffered saline, 0.5% BSA
精製度	Immunogen affinity purified
特記事項(精製)	Purified from goat serum by ammonium sulphate precipitation followed by antigen affinity chromatography using the immunizing peptide.
ポリ/モノ	ポリクローナル

アプリケーション

The Abpromise guarantee **Abpromise保証は、次のテスト済みアプリケーションにおけるab24368の使用に適用されず**

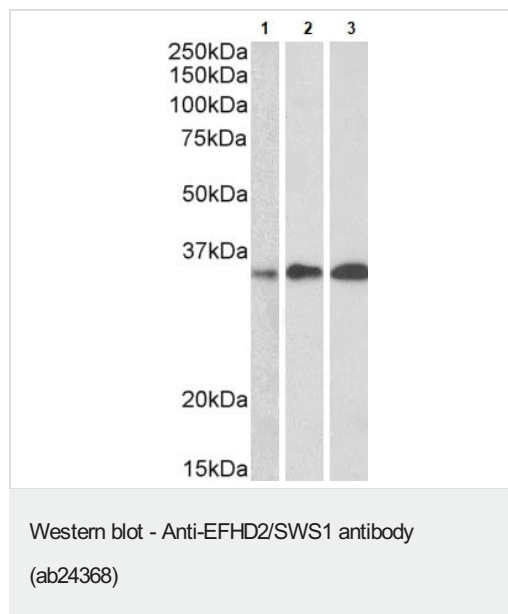
アプリケーションノートには、推奨の開始希釈率がありますが、適切な希釈率につきましてはご検討ください。

アプリケーション	Abreviews	特記事項
WB		Use a concentration of 0.5 - 1.5 µg/ml. Detects a band of approximately 28-30 kDa. 1 hour primary incubation is recommended for this product.

ターゲット情報

機能	May regulate B-cell receptor (BCR)-induced immature and primary B-cell apoptosis (By similarity). Plays a role as negative regulator of the canonical NF-kappa-B-activating branch (By similarity). Controls spontaneous apoptosis through the regulation of BCL2L1 abundance.
組織特異性	Found in lymphocytes; preferentially expressed in CD8+ cells.
配列類似性	Contains 2 EF-hand domains.
細胞内局在	Membrane raft. In immature B-cell line WEHI231.

画像



All lanes : Anti-EFHD2/SWS1 antibody (ab24368) at 0.5 µg/ml

Lane 1 : Human thymus lysate

Lane 2 : Human lymph node lysate

Lane 3 : Human tonsil lysate

Lysates/proteins at 35 µg per lane.

Western blot analysis labeling EFHD2/SWS1 with ab24368 at 0.5 ug/ml.

Please note: All products are "FOR RESEARCH USE ONLY. NOT FOR USE IN DIAGNOSTIC PROCEDURES"

Our Abpromise to you: Quality guaranteed and expert technical support

- Replacement or refund for products not performing as stated on the datasheet
- Valid for 12 months from date of delivery
- Response to your inquiry within 24 hours

- We provide support in Chinese, English, French, German, Japanese and Spanish
- Extensive multi-media technical resources to help you
- We investigate all quality concerns to ensure our products perform to the highest standards

If the product does not perform as described on this datasheet, we will offer a refund or replacement. For full details of the Abpromise, please visit <https://www.abcam.co.jp/abpromise> or contact our technical team.

Terms and conditions

- Guarantee only valid for products bought direct from Abcam or one of our authorized distributors