


Anti-EFHD2/SWS1 antibody ab119119

1 References [画像数 2](#)

製品の概要

| | |
|--------------|---|
| 製品名 | Anti-EFHD2/SWS1 antibody |
| 製品の詳細 | Rabbit polyclonal to EFHD2/SWS1 |
| 由来種 | Rabbit |
| アプリケーション | 適用あり: IHC-P |
| 種交差性 | 交差種: Human 交差が予測される動物種: Mouse, Rat  |
| 免疫原 | Synthetic peptide corresponding to Human EFHD2/SWS1 (N terminal) conjugated to keyhole limpet haemocyanin. |
| ポジティブ・コントロール | Human Thymus and Tonsil tissues |
| 特記事項 | <p>The Life Science industry has been in the grips of a reproducibility crisis for a number of years. Abcam is leading the way in addressing this with our range of recombinant monoclonal antibodies and knockout edited cell lines for gold-standard validation. Please check that this product meets your needs before purchasing.</p> <p>If you have any questions, special requirements or concerns, please send us an inquiry and/or contact our Support team ahead of purchase. Recommended alternatives for this product can be found below, along with publications, customer reviews and Q&As</p> |

製品の特性

| | |
|--------|---|
| 製品の状態 | Liquid |
| 保存方法 | Shipped at 4°C. Store at +4°C short term (1-2 weeks). Store at -20°C or -80°C. Avoid freeze / thaw cycle. |
| バッファー | pH: 7.4 Preservative: 0.02% Sodium azide Constituent: 99% PBS |
| 精製度 | Immunogen affinity purified |
| ポリ/モノ | ポリクローナル |
| アイソタイプ | IgG |

アプリケーション

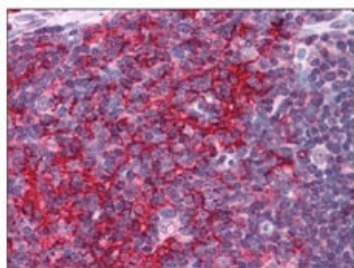
The Abpromise guarantee **Abpromise保証は、次のテスト済みアプリケーションにおけるab119119の使用に適用されます**
 アプリケーションノートには、推奨の開始希釈率がありますが、適切な希釈率につきましてはご検討ください。

| アプリケーション | Abreviews | 特記事項 |
|----------|-----------|---------------------------------|
| IHC-P | | Use a concentration of 5 µg/ml. |

ターゲット情報

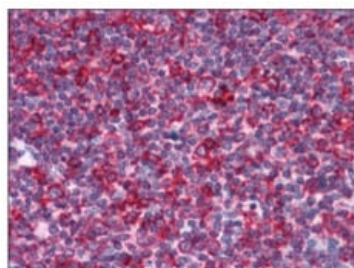
| | |
|--------------|--|
| 機能 | May regulate B-cell receptor (BCR)-induced immature and primary B-cell apoptosis (By similarity). Plays a role as negative regulator of the canonical NF-kappa-B-activating branch (By similarity). Controls spontaneous apoptosis through the regulation of BCL2L1 abundance. |
| 組織特異性 | Found in lymphocytes; preferentially expressed in CD8+ cells. |
| 配列類似性 | Contains 2 EF-hand domains. |
| 細胞内局在 | Membrane raft. In immature B-cell line WEHI231. |

画像



Immunohistochemistry on Formalin-Fixed, Paraffin-Embedded Human Thymus tissue using ab119119 at 5 µg/ml.

Immunohistochemistry (Formalin/PFA-fixed paraffin-embedded sections) - Anti-EFHD2/SWS1 antibody (ab119119)



Immunohistochemistry on Formalin-Fixed, Paraffin-Embedded Human Tonsil tissue using ab119119 at 5 µg/ml.

Immunohistochemistry (Formalin/PFA-fixed paraffin-embedded sections) - Anti-EFHD2/SWS1 antibody (ab119119)

Our Abpromise to you: Quality guaranteed and expert technical support

- Replacement or refund for products not performing as stated on the datasheet
- Valid for 12 months from date of delivery
- Response to your inquiry within 24 hours

- We provide support in Chinese, English, French, German, Japanese and Spanish
- Extensive multi-media technical resources to help you
- We investigate all quality concerns to ensure our products perform to the highest standards

If the product does not perform as described on this datasheet, we will offer a refund or replacement. For full details of the Abpromise, please visit <https://www.abcam.co.jp/abpromise> or contact our technical team.

Terms and conditions

- Guarantee only valid for products bought direct from Abcam or one of our authorized distributors