

Anti-EFEMP1/Fibulin-3 antibody ab106429

3 References [画像数 3](#)

製品の概要

製品名	Anti-EFEMP1/Fibulin-3 antibody
製品の詳細	Rabbit polyclonal to EFEMP1/Fibulin-3
由来種	Rabbit
特異性	ab106429 is predicted not to cross-react with other Fibulin proteins.
アプリケーション	適用あり: ICC/IF, WB, ICC
種交差性	交差種: Human
免疫原	Synthetic peptide corresponding to Human EFEMP1/Fibulin-3 (C terminal). Database link: Q12805
ポジティブ・コントロール	HeLa cell lysate.
特記事項	<p>Antibodies should not be exposed to prolonged high temperatures.</p> <p>The Life Science industry has been in the grips of a reproducibility crisis for a number of years. Abcam is leading the way in addressing this with our range of recombinant monoclonal antibodies and knockout edited cell lines for gold-standard validation. Please check that this product meets your needs before purchasing.</p> <p>If you have any questions, special requirements or concerns, please send us an inquiry and/or contact our Support team ahead of purchase. Recommended alternatives for this product can be found below, along with publications, customer reviews and Q&As</p>

製品の特性

製品の状態	Liquid
保存方法	Shipped at 4°C. Store at +4°C short term (1-2 weeks). Upon delivery aliquot. Store at -20°C. Avoid freeze / thaw cycle. Please see notes section.
バッファー	pH: 7.2 Preservative: 0.02% Sodium azide Constituent: PBS
精製度	Immunogen affinity purified
ポリ/モノ	ポリクローナル
アイソタイプ	IgG

アプリケーション

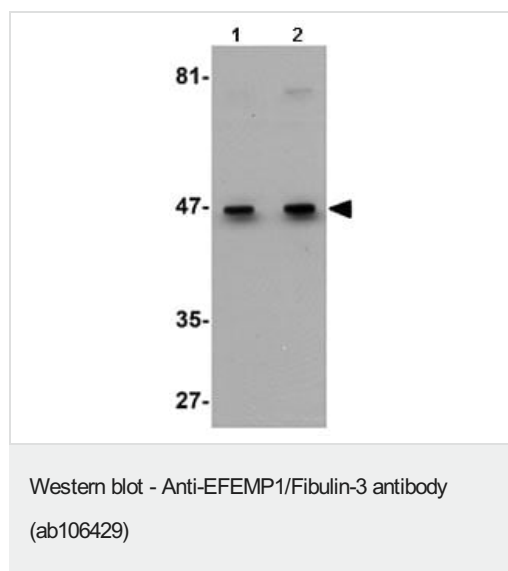
The Abpromise guarantee **Abpromise保証は、** 次のテスト済みアプリケーションにおけるab106429の使用に適用されます
アプリケーションノートには、推奨の開始希釈率がありますが、適切な希釈率につきましてはご確認ください。

アプリケーション	Abreviews	特記事項
ICC/IF		Use a concentration of 20 µg/ml.
WB		Use a concentration of 0.5 - 1 µg/ml. Predicted molecular weight: 55 kDa.
ICC		Use a concentration of 20 µg/ml.

ターゲット情報

機能	Binds EGFR, the EGF receptor, inducing EGFR autophosphorylation and the activation of downstream signaling pathways. May play a role in cell adhesion and migration. May function as a negative regulator of chondrocyte differentiation. In the olfactory epithelium, it may regulate glial cell migration, differentiation and the ability of glial cells to support neuronal neurite outgrowth.
組織特異性	In the eye, associated with photoreceptor outer and inner segment regions, the nerve fiber layer, outer nuclear layer and inner and outer plexiform layers of the retina.
関連疾患	Defects in EFEMP1 are a cause of Doyme honeycomb retinal dystrophy (DHRD) [MIM:126600]; also known as malattia leventinese (MLVT) (ML). DHRD is an autosomal dominant disease characterized by yellow-white deposits known as drusen that accumulate beneath the retinal pigment epithelium.
配列類似性	Belongs to the fibulin family. Contains 6 EGF-like domains.
細胞内局在	Secreted > extracellular space. Secreted > extracellular space > extracellular matrix. Localizes to the lamina propria underneath the olfactory epithelium.

画像



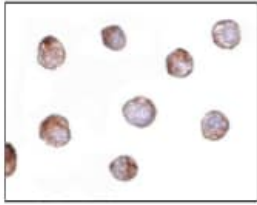
Lane 1 : Anti-EFEMP1/Fibulin-3 antibody (ab106429) at 0.5 µg/ml

Lane 2 : Anti-EFEMP1/Fibulin-3 antibody (ab106429) at 1 µg/ml

All lanes : HeLa cell lysate

Lysates/proteins at 15 µg per lane.

Predicted band size: 55 kDa



Immunohistochemical analysis of HeLa cells labelling
EFEMP1/Fibulin-3 with ab106429 at 20 µg/ml.

Immunocytochemistry - Anti-EFEMP1/Fibulin-3
antibody (ab106429)

Immunocytochemistry/ Immunofluorescence - Anti-
EFEMP1/Fibulin-3 antibody (ab106429)

Immunofluorescence analysis of HeLa cells labelling Fibulin 3
with ab106429 at 20 µg/ml.

Please note: All products are "FOR RESEARCH USE ONLY. NOT FOR USE IN DIAGNOSTIC PROCEDURES"

Our Abpromise to you: Quality guaranteed and expert technical support

- Replacement or refund for products not performing as stated on the datasheet
- Valid for 12 months from date of delivery
- Response to your inquiry within 24 hours
- We provide support in Chinese, English, French, German, Japanese and Spanish
- Extensive multi-media technical resources to help you
- We investigate all quality concerns to ensure our products perform to the highest standards

If the product does not perform as described on this datasheet, we will offer a refund or replacement. For full details of the Abpromise, please visit <https://www.abcam.co.jp/abpromise> or contact our technical team.

Terms and conditions

- Guarantee only valid for products bought direct from Abcam or one of our authorized distributors