


Anti-EEF2K antibody [EP724Y] ab46787

KO 評価済 RabMAb

1 References 画像数 2

製品の概要

製品名	Anti-EEF2K antibody [EP724Y]
製品の詳細	Rabbit monoclonal [EP724Y] to EEF2K
由来種	Rabbit
アプリケーション	適用あり: WB 適用なし: Flow Cyt, ICC/IF or IHC-P
種交差性	交差種: Human 交差が予測される動物種: Mouse, Rat 
免疫原	Synthetic peptide. This information is proprietary to Abcam and/or its suppliers.
ポジティブ・コントロール	WB: Wild-type HAP1 cell lysate. HeLa and Jurkat cell lysate.
特記事項	Our RabMAb [®] technology is a patented hybridoma-based technology for making rabbit monoclonal antibodies. For details on our patents, please refer to RabMAb[®] patents . The Life Science industry has been in the grips of a reproducibility crisis for a number of years. Abcam is leading the way in addressing this with our range of recombinant monoclonal antibodies and knockout edited cell lines for gold-standard validation. Please check that this product meets your needs before purchasing. If you have any questions, special requirements or concerns, please send us an inquiry and/or contact our Support team ahead of purchase. Recommended alternatives for this product can be found below, along with publications, customer reviews and Q&As

製品の特性

製品の状態	Liquid
保存方法	Shipped at 4°C. Store at -20°C. Stable for 12 months at -20°C.
バッファー	pH: 7.20 Preservative: 0.05% Sodium azide Constituents: 99% Tissue culture supernatant, 0.1% BSA
精製度	Protein A purified
ポリ/モノ	モノクローナル
クローン名	EP724Y

アプリケーション

The Abpromise guarantee Abpromise保証は、次のテスト済みアプリケーションにおけるab46787の使用に適用されます
アプリケーションノートには、推奨の開始希釈率がありますが、適切な希釈率につきましてはご検討ください。

アプリケーション	Abreviews	特記事項
WB		1/50000. Detects a band of approximately 95 kDa (predicted molecular weight: 82 kDa).

追加情報

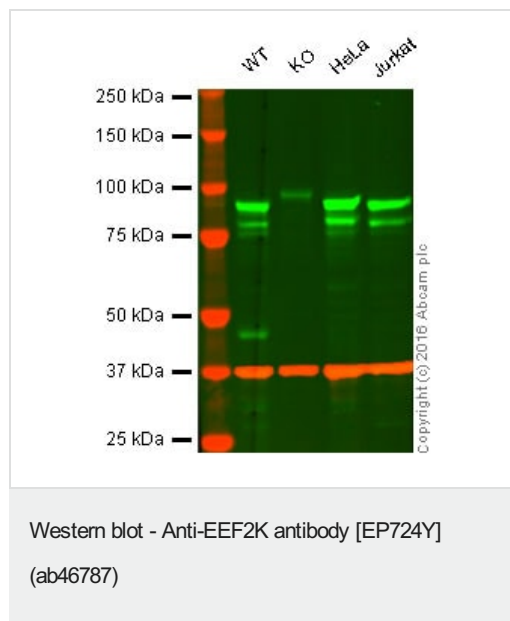
Is unsuitable for Flow Cyt, ICC/IF or IHC-P.

ターゲット情報

機能 Phosphorylates eukaryotic elongation factor-2. Binds calmodulin.

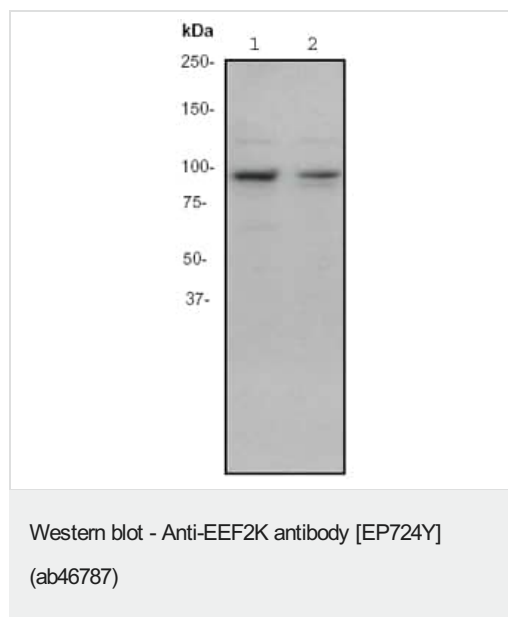
配列類似性 Belongs to the protein kinase superfamily. Alpha-type protein kinase family. Contains 1 alpha-type protein kinase domain.

画像



Lane 1: Wild-type HAP1 cell lysate (20 µg)
Lane 2: EEF2K knockout HAP1 cell lysate (20 µg)
Lane 3: HeLa cell lysate (20 µg)
Lane 4: Jurkat cell lysate (20 µg)
Lanes 1 - 4: Merged signal (red and green). Green - ab46787 observed at 95 kDa. Red - loading control, **ab8245**, observed at 37 kDa.

ab46787 was shown to specifically react with EEF2K when EEF2K knockout samples were used. Wild-type and EEF2K knockout samples were subjected to SDS-PAGE. ab46787 and **ab8245** (loading control to GAPDH) were diluted at 1/50 000 and 1/10000 respectively and incubated overnight at 4°C. Blots were developed with Goat anti-Rabbit IgG H&L (IRDye® 800CW) preadsorbed **ab216773** and Goat anti-Mouse IgG H&L (IRDye® 680RD) preadsorbed **ab216776** secondary antibodies at 1/10000 dilution for 1 h at room temperature before imaging.



All lanes : Anti-EEF2K antibody [EP724Y] (ab46787) at 1/50000 dilution

Lane 1 : HeLa cell lysate

Lane 2 : Jurkat cell lysate

Lysates/proteins at 10 µg per lane.

Secondary

All lanes : Goat anti-rabbit HRP at 1/2000 dilution

Predicted band size: 82 kDa

Observed band size: 95 kDa

Please note: All products are "FOR RESEARCH USE ONLY. NOT FOR USE IN DIAGNOSTIC PROCEDURES"

Our Abpromise to you: Quality guaranteed and expert technical support

- Replacement or refund for products not performing as stated on the datasheet
- Valid for 12 months from date of delivery
- Response to your inquiry within 24 hours
- We provide support in Chinese, English, French, German, Japanese and Spanish
- Extensive multi-media technical resources to help you
- We investigate all quality concerns to ensure our products perform to the highest standards

If the product does not perform as described on this datasheet, we will offer a refund or replacement. For full details of the Abpromise, please visit <https://www.abcam.co.jp/abpromise> or contact our technical team.

Terms and conditions

- Guarantee only valid for products bought direct from Abcam or one of our authorized distributors