

# Anti-EEF2/Elongation factor 2 antibody [EP880Y] ab75748

リコンビナント **RabMAb**

**6 References**   [画像数 11](#)

### 製品の概要

製品名	Anti-EEF2/Elongation factor 2 antibody [EP880Y]
製品の詳細	Rabbit monoclonal [EP880Y] to EEF2/Elongation factor 2
由来種	Rabbit
アプリケーション	<b>適用あり:</b> Flow Cyt (Intra), WB, IP, IHC-P, ICC/IF
種交差性	<b>交差種:</b> Mouse, Rat, Human
免疫原	Synthetic peptide within Human EEF2/Elongation factor 2 (C terminal). The exact sequence is proprietary.
ポジティブ・コントロール	A431, NIH3T3, HeLa, C6, PC-12 and NIH/3T3 cell lysates. Kidney carcinoma tissue, rat pancreas, mouse pancreas, human glioma.
特記事項	<p>This product is a recombinant monoclonal antibody, which offers several advantages including:</p> <ul style="list-style-type: none"> <li>- High batch-to-batch consistency and reproducibility</li> <li>- Improved sensitivity and specificity</li> <li>- Long-term security of supply</li> <li>- Animal-free production</li> </ul> <p>For more information <a href="#">see here</a>.</p> <p>Our RabMAb<sup>®</sup> technology is a patented hybridoma-based technology for making rabbit monoclonal antibodies. For details on our patents, please refer to <a href="#">RabMAb<sup>®</sup> patents</a>.</p>

### 製品の特性

製品の状態	Liquid
保存方法	Shipped at 4°C. Store at +4°C short term (1-2 weeks). Upon delivery aliquot. Store at -20°C. Avoid freeze / thaw cycle.
バッファー	<p>pH: 7.20</p> <p>Preservative: 0.01% Sodium azide</p> <p>Constituents: 59% PBS, 40% Glycerol (glycerin, glycerine), 0.1% BSA</p>
精製度	Protein A purified
ポリ/モノ	モノクローナル
クローン名	EP880Y

アイソタイプ

IgG

アプリケーション

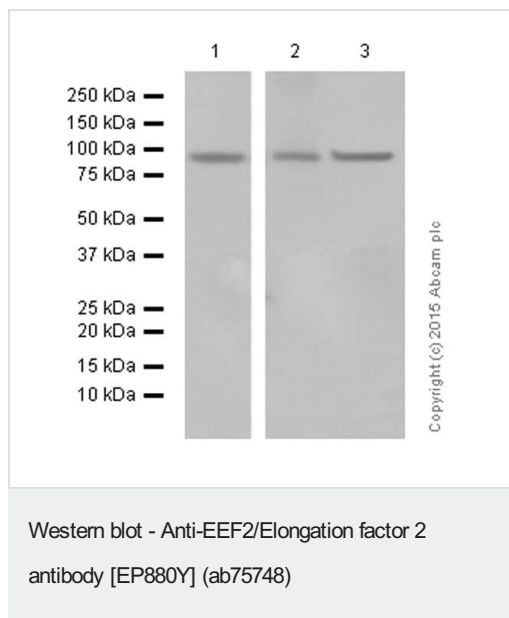
The Abpromise guarantee      **Abpromise保証は、** 次のテスト済みアプリケーションにおけるab75748の使用に適用されます  
アプリケーションノートには、推奨の開始希釈率がありますが、適切な希釈率につきましてはご検討ください。

アプリケーション	Abreviews	特記事項
Flow Cyt (Intra)		1/70. <b>ab172730</b> - Rabbit monoclonal IgG, is suitable for use as an isotype control with this antibody.
WB		1/10000 - 1/50000. Detects a band of approximately 95 kDa (predicted molecular weight: 95 kDa).
IP		1/20.
IHC-P		1/100 - 1/250. Perform heat mediated antigen retrieval with citrate buffer pH 6 before commencing with IHC staining protocol.
ICC/IF		1/100 - 1/250.

ターゲット情報

機能	Catalyzes the GTP-dependent ribosomal translocation step during translation elongation. During this step, the ribosome changes from the pre-translocational (PRE) to the post-translocational (POST) state as the newly formed A-site-bound peptidyl-tRNA and P-site-bound deacylated tRNA move to the P and E sites, respectively. Catalyzes the coordinated movement of the two tRNA molecules, the mRNA and conformational changes in the ribosome.
配列類似性	Belongs to the GTP-binding elongation factor family. EF-G/EF-2 subfamily.
翻訳後修飾	Phosphorylation by EF-2 kinase completely inactivates EF-2. Diphthamide is 2-[3-carboxyamido-3-(trimethyl-ammonio)propyl]histidine. Diphthamide can be ADP-ribosylated by diphtheria toxin and by Pseudomonas exotoxin A, thus arresting protein synthesis. ISGylated.
細胞内局在	Cytoplasm.

画像



**All lanes :** Anti-EEF2/Elongation factor 2 antibody [EP880Y] (ab75748) at 1/50000 dilution

**Lane 1 :** C6 (rat glioma) whole cell lysates

**Lane 2 :** PC-12 (rat adrenal gland pheochromocytoma) whole cell lysates

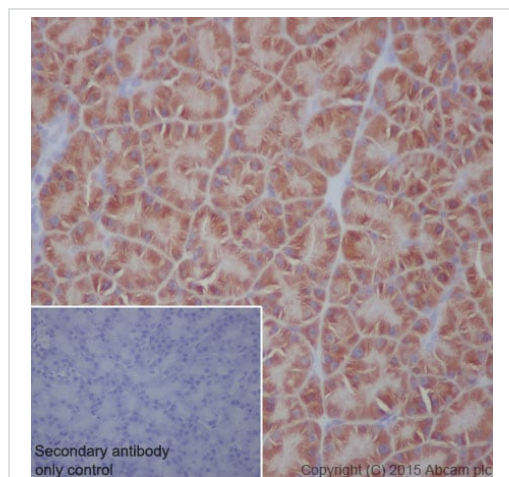
**Lane 3 :** NIH/3T3 (mouse embryo) whole cell lysates

Lysates/proteins at 20 µg per lane.

### Secondary

**All lanes :** Rabbit monoclonal [EP880Y] to EEF2/Elongation factor 2 (ab75748) at 1/100000 dilution

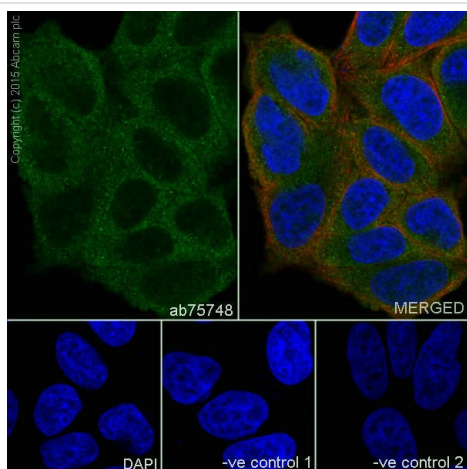
**Predicted band size:** 95 kDa



ab75748 staining EEF2/Elongation factor 2 in rat pancreas tissue sections by Immunohistochemistry (IHC-P - paraformaldehyde-fixed, paraffin-embedded sections). Tissue was fixed with paraformaldehyde and antigen retrieval was by heat mediation in a EDTA buffer. Samples were incubated with primary antibody at a dilution of 1/700. A goat anti-rabbit IgG H&L (HRP) **ab97051** was used as the secondary antibody at a dilution of 1/500.

**Negative control 1:** PBS in place of primary antibody.

Immunohistochemistry (Formalin/PFA-fixed paraffin-embedded sections) - Anti-EEF2/Elongation factor 2 antibody [EP880Y] (ab75748)

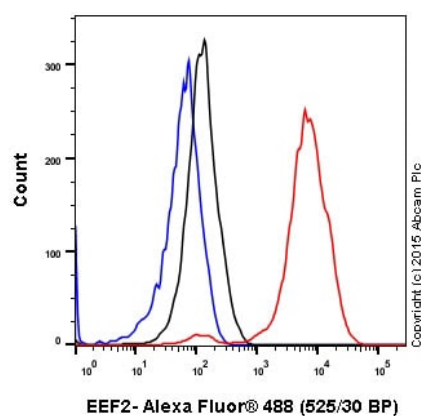


Immunocytochemistry/ Immunofluorescence - Anti-EEF2/Elongation factor 2 antibody [EP880Y] (ab75748)

ab75748 staining EEF2/Elongation factor 2 in HeLa (human cervix adenocarcinoma) cells by ICC/IF (Immunocytochemistry/immunofluorescence). Cells were fixed with 4% Paraformaldehyde and permeabilized with 0.1% Triton X-100. Samples were incubated with primary antibody at a dilution of 1/100. A goat anti rabbit IgG (Alexa Fluor® 488) ([ab150077](#)) was used as the secondary antibody. [ab7291](#) and [ab150120](#) were used as counterstains for primary antibody ab75748 and secondary antibody [ab150077](#) respectively and DAPI was used as a nuclear counterstain.

**Negative control 1:** Rabbit primary antibody and anti-mouse secondary antibody ([ab150120](#))

**Negative control 2:** Mouse primary antibody ([ab7291](#)) and anti-rabbit secondary antibody ([ab150077](#))

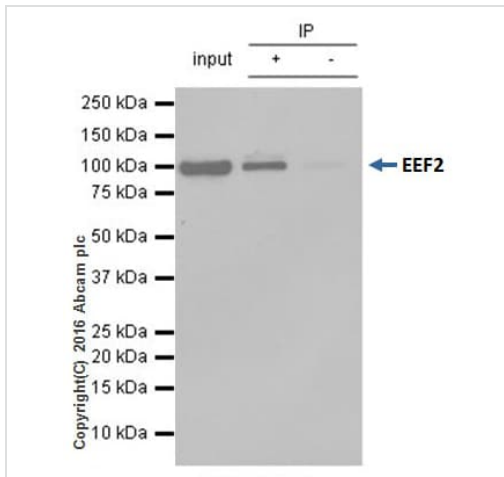


Flow Cytometry (Intracellular) - Anti-EEF2/Elongation factor 2 antibody [EP880Y] (ab75748)

ab75748 staining EEF2/Elongation factor 2 in the human cell line HEK293 (human embryonic kidney) by intracellular flow cytometry. Cells were fixed with 4% paraformaldehyde and the sample was incubated with the primary antibody at a dilution of 1/70. A goat anti rabbit IgG (Alexa Fluor® 488) at a dilution of 1/500 was used as the secondary antibody.

Isootype control: Rabbit monoclonal IgG (Black)

Unlabelled control: Cell without incubation with primary antibody and secondary antibody (Blue)



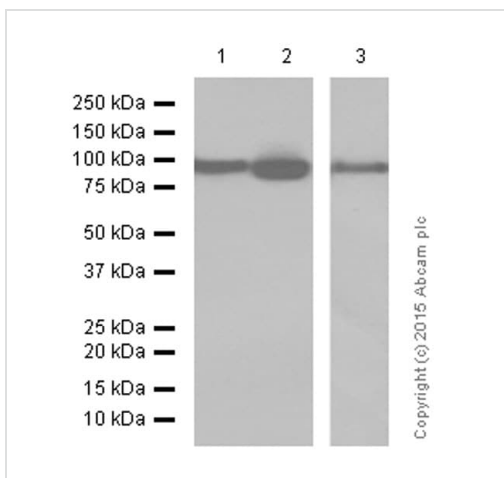
Immunoprecipitation - Anti-EEF2/Elongation factor 2 antibody [EP880Y] (ab75748)

ab75748 immunoprecipitating EEF2/Elongation factor 2. 10µg of cell lysate was incubated with primary antibody at a dilution of 1/20 and VeriBlot for IP Detection Reagent (HRP) ([ab131366](#)) at a dilution of 1/10000.

**Lane 1:** HeLa (human cervix adenocarcinoma) whole cell lysate (10ug)

**Lane 2:** HeLa (human cervix adenocarcinoma) whole cell lysate

**Lane 3:** Rabbit monoclonal IgG ([ab172730](#)) instead of ab75748 in HeLa (human cervix adenocarcinoma) whole cell lysate



Western blot - Anti-EEF2/Elongation factor 2 antibody [EP880Y] (ab75748)

**All lanes :** Anti-EEF2/Elongation factor 2 antibody [EP880Y] (ab75748) at 1/50000 dilution

**Lane 1 :** HEK293 (human embryonic kidney) whole cell lysates

**Lane 2 :** HeLa (human cervix adenocarcinoma) whole cell lysates

**Lane 3 :** A431 (human epidermoid carcinoma) whole cell lysates

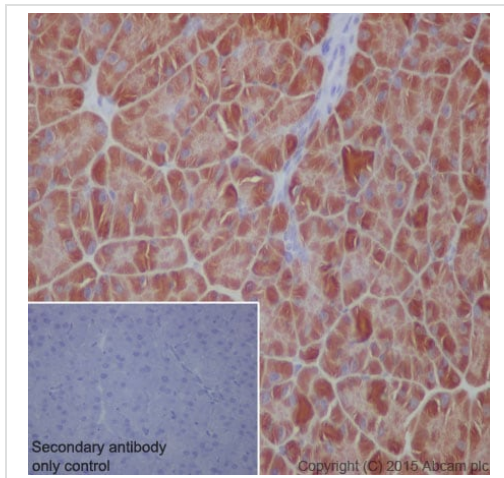
Lysates/proteins at 20 µg per lane.

### Secondary

**All lanes :** Goat Anti-Rabbit IgG H&L (HRP) ([ab97051](#)) at 1/100000 dilution

**Predicted band size:** 95 kDa

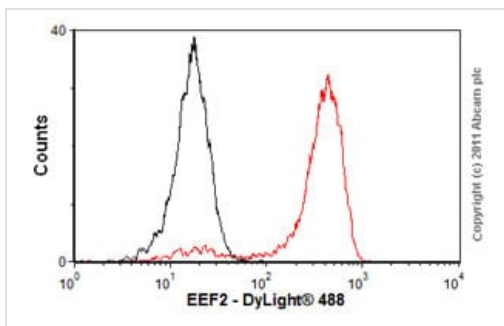
**Additional bands at:** 95 kDa. We are unsure as to the identity of these extra bands.



Immunohistochemistry (Formalin/PFA-fixed paraffin-embedded sections) - Anti-EEF2/Elongation factor 2 antibody [EP880Y] (ab75748)

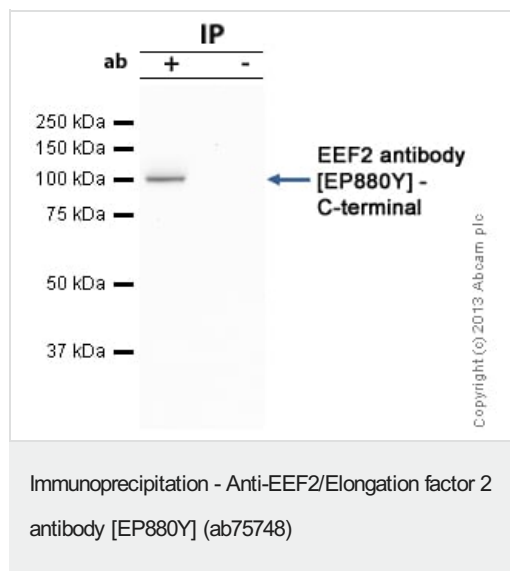
ab75748 staining EEF2/Elongation factor 2 in mouse pancreas tissue sections by Immunohistochemistry (IHC-P - paraformaldehyde-fixed, paraffin-embedded sections). Tissue was fixed with paraformaldehyde and antigen retrieval was by heat mediation in a EDTA buffer. Samples were incubated with primary antibody at a dilution of 1/250. A goat anti-rabbit IgG H&L (HRP) **ab97051** was used as the secondary antibody.

**Negative control 1:** PBS in place of primary antibody.



Flow Cytometry (Intracellular) - Anti-EEF2/Elongation factor 2 antibody [EP880Y] (ab75748)

Overlay histogram showing HeLa cells stained with ab75748 (red line). The cells were fixed with 80% methanol (5 min) and then permeabilized with 0.1% PBS-Tween for 20 min. The cells were then incubated in 1x PBS / 10% normal goat serum / 0.3M glycine to block non-specific protein-protein interactions followed by the antibody (ab75748, 1µg/1x10<sup>6</sup> cells) for 30 min at 22°C. The secondary antibody used was DyLight® 488 goat anti-rabbit IgG (H+L) (**ab96899**) at 1/500 dilution for 30 min at 22°C. Isotype control antibody (black line) was rabbit IgG (monoclonal) (1µg/1x10<sup>6</sup> cells) used under the same conditions. Acquisition of >5,000 events was performed.



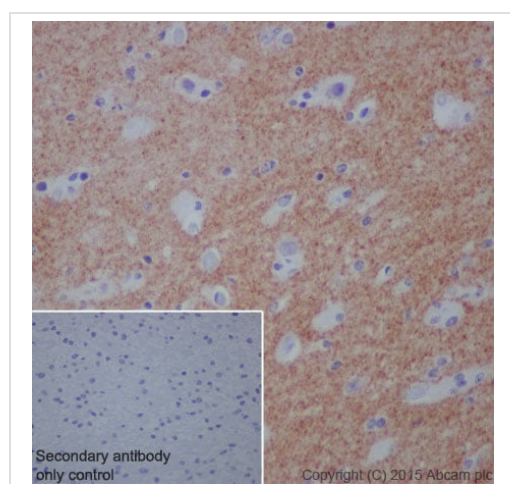
EEF2/Elongation factor 2 was immunoprecipitated using 0.5mg Hela whole cell extract, 5µg of Rabbit monoclonal to EEF2/Elongation factor 2 and 50µl of protein G magnetic beads (+). No antibody was added to the control (-).

The antibody was incubated under agitation with Protein G beads for 10min, Hela whole cell extract lysate diluted in RIPA buffer was added to each sample and incubated for a further 10min under agitation.

Proteins were eluted by addition of 40µl SDS loading buffer and incubated for 10min at 70°C; 10µl of each sample was separated on a SDS PAGE gel, transferred to a nitrocellulose membrane, blocked with 5% BSA and probed with ab75748.

Secondary: Mouse monoclonal [SB62a] Secondary Antibody to Rabbit IgG light chain (HRP) ([ab99697](#)).

Band: 95kDa; EEF2/Elongation factor 2



ab75748 staining EEF2/Elongation factor 2 in human glioma tissue sections by Immunohistochemistry (IHC-P - paraformaldehyde-fixed, paraffin-embedded sections). Tissue was fixed with paraformaldehyde and antigen retrieval was by heat mediation in a EDTA buffer. Samples were incubated with primary antibody at a dilution of 1/250. A goat anti-rabbit IgG H&L (HRP) ([ab97051](#)) was used as the secondary antibody.

**Negative control 1:** PBS in place of primary antibody.



### Why choose a recombinant antibody?



**Research with confidence**  
Consistent and reproducible results



**Long-term and scalable supply**  
Recombinant technology



**Success from the first experiment**  
Confirmed specificity



**Ethical standards compliant**  
Animal-free production

Anti-EEF2/Elongation factor 2 antibody [EP880Y]  
(ab75748)

**Please note:** All products are "FOR RESEARCH USE ONLY. NOT FOR USE IN DIAGNOSTIC PROCEDURES"

### Our Abpromise to you: Quality guaranteed and expert technical support

---

- Replacement or refund for products not performing as stated on the datasheet
- Valid for 12 months from date of delivery
- Response to your inquiry within 24 hours
- We provide support in Chinese, English, French, German, Japanese and Spanish
- Extensive multi-media technical resources to help you
- We investigate all quality concerns to ensure our products perform to the highest standards

If the product does not perform as described on this datasheet, we will offer a refund or replacement. For full details of the Abpromise, please visit <https://www.abcam.co.jp/abpromise> or contact our technical team.

### Terms and conditions

---

- Guarantee only valid for products bought direct from Abcam or one of our authorized distributors