

Anti-EED antibody ab4469

KO 評価済

★★★★★ [3 Abreviews](#) [31 References](#) [画像数 3](#)

製品の概要

製品名	Anti-EED antibody
製品の詳細	Rabbit polyclonal to EED
由来種	Rabbit
アプリケーション	適用あり: WB, ICC/IF
種交差性	交差種: Human, Recombinant fragment 交差が予測される動物種: Mouse, Chicken, Cow, Xenopus laevis 
免疫原	Synthetic peptide. This information is proprietary to Abcam and/or its suppliers.
ポジティブ・コントロール	WB: Human Recombinant EED Protein, HAP1, HeLa and HepG2 cell lysates ICC/IF: U-2 OS cells
特記事項	<p>The Life Science industry has been in the grips of a reproducibility crisis for a number of years. Abcam is leading the way in addressing this with our range of recombinant monoclonal antibodies and knockout edited cell lines for gold-standard validation. Please check that this product meets your needs before purchasing.</p> <p>If you have any questions, special requirements or concerns, please send us an inquiry and/or contact our Support team ahead of purchase. Recommended alternatives for this product can be found below, along with publications, customer reviews and Q&As</p>

製品の特性

製品の状態	Liquid
保存方法	Shipped at 4°C. Store at +4°C short term (1-2 weeks). Upon delivery aliquot. Store at -20°C or -80°C. Avoid freeze / thaw cycle.
バッファー	pH: 7.40 Preservative: 0.02% Sodium azide Constituent: PBS Batches of this product that have a concentration < 1mg/ml may have BSA added as a stabilising agent. If you would like information about the formulation of a specific lot, please contact our scientific support team who will be happy to help.
精製度	Immunogen affinity purified

ポリ/モノ ポリクローナル
アイソタイプ IgG

アプリケーション

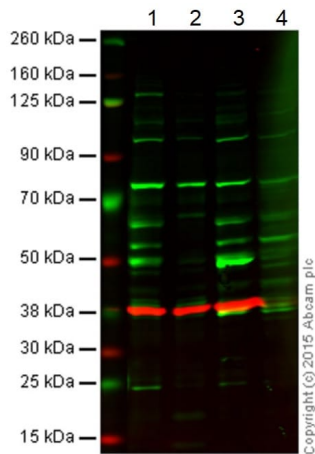
The Abpromise guarantee **Abpromise保証は、** 次のテスト済みアプリケーションにおけるab4469の使用に適用されます
アプリケーションノートには、推奨の開始希釈率がありますが、適切な希釈率につきましてはご検討ください。

アプリケーション	Abreviews	特記事項
WB	★★★★★ (3)	1/200. Predicted molecular weight: 49 kDa.
ICC/IF		1/100.

ターゲット情報

機能	Polycomb group (PcG) protein. Component of the PRC2/EED-EZH2 complex, which methylates 'Lys-9' and 'Lys-27' of histone H3, leading to transcriptional repression of the affected target gene. The PRC2/EED-EZH2 complex may also serve as a recruiting platform for DNA methyltransferases, thereby linking two epigenetic repression systems. Genes repressed by the PRC2/EED-EZH2 complex include HOXC8, HOXA9, MYT1 and CDKN2A.
組織特異性	Expressed in brain, colon, heart, kidney, liver, lung, muscle, ovary, peripheral blood leukocytes, pancreas, placenta, prostate, spleen, small intestine, testis, thymus and uterus. Appears to be overexpressed in breast and colon cancer.
配列類似性	Belongs to the WD repeat ESC family. Contains 7 WD repeats.
発生段階	Expression peaks at the G1/S phase boundary.
細胞内局在	Nucleus. Chromosome. Transiently colocalizes with XIST at inactive X chromosomes.

画像



Western blot - Anti-EED antibody (ab4469)

Lane 1: Wild-type HAP1 cell lysate (20 µg)

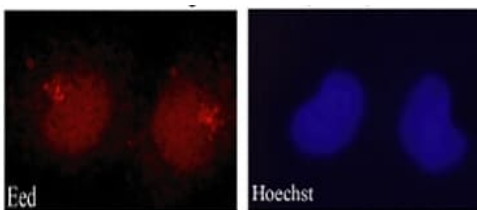
Lane 2: EED knockout HAP1 cell lysate (20 µg)

Lane 3: HeLa cell lysate (20 µg)

Lane 4: HepG2 cell lysate (20 µg)

Lanes 1 - 4: Merged signal (red and green). Green - ab4469 observed at 55 kDa. Red - loading control, **ab8245**, observed at 37 kDa.

ab4469 was shown to recognize EED in wild-type HAP1 cells along with additional cross-reactive bands. No band was observed when EED knockout samples were examined. Wild-type and EED knockout samples were subjected to SDS-PAGE. ab4469 and **ab8245** (loading control to GAPDH) were diluted 1/250 and 1/1000 respectively and incubated overnight at 4°C. Blots were developed with Goat anti-Rabbit IgG H&L (IRDye® 800CW) preadsorbed (**ab216773**) and Goat anti-Mouse IgG H&L (IRDye® 680RD) preadsorbed (**ab216776**) secondary antibodies at 1/10,000 dilution for 1 hour at room temperature before imaging.

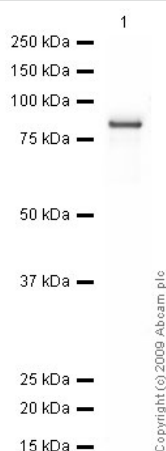


Immunocytochemistry/ Immunofluorescence - Anti-EED antibody (ab4469)

Rabbit polyclonal to EED (ab4469) on U-2 OS (Human bone osteosarcoma epithelial cell line) cells. Antibody used at 1/100.

U-2 OS cells were fixed with PFA (3.7%), permeabilised with PBS 0.1% Triton. Counterstained with Hoechst. Cells were examined with Axioplan 2 microscope (Zeiss).

Secondary antibody: donkey anti-rabbit (Cy3).



Western blot - Anti-EED antibody (ab4469)

Anti-EED antibody (ab4469) at 1/250 dilution + EED Recombinant Protein (Human) at 0.1 µg

Secondary

Goat polyclonal to Rabbit IgG - H&L - Pre-Adsorbed (HRP) at 1/3000 dilution

Performed under reducing conditions.

Predicted band size: 49 kDa

Observed band size: 80 kDa

ab4469 recognizes the full-length recombinant EED protein which has an expected molecular weight of 80 kDa (tagged).

Please note: All products are "FOR RESEARCH USE ONLY. NOT FOR USE IN DIAGNOSTIC PROCEDURES"

Our Abpromise to you: Quality guaranteed and expert technical support

- Replacement or refund for products not performing as stated on the datasheet
- Valid for 12 months from date of delivery
- Response to your inquiry within 24 hours
- We provide support in Chinese, English, French, German, Japanese and Spanish
- Extensive multi-media technical resources to help you
- We investigate all quality concerns to ensure our products perform to the highest standards

If the product does not perform as described on this datasheet, we will offer a refund or replacement. For full details of the Abpromise, please visit <https://www.abcam.co.jp/abpromise> or contact our technical team.

Terms and conditions

- Guarantee only valid for products bought direct from Abcam or one of our authorized distributors