


Anti-EEA1 antibody [1G11] - Early Endosome Marker ab70521

★★★★★ **8 Abreviews** **73 References** 画像数 1

製品の概要

製品名	Anti-EEA1 antibody [1G11] - Early Endosome Marker
製品の詳細	Mouse monoclonal [1G11] to EEA1 - Early Endosome Marker
由来種	Mouse
アプリケーション	適用あり: ICC/IF 適用なし: WB
種交差性	交差種: Human 交差が予測される動物種: Mouse, Rat, Rabbit 
免疫原	Recombinant fragment corresponding to Human EEA1 aa 50 to the C-terminus.
ポジティブ・コントロール	This antibody gave a positive immunofluorescent signal in the following cell lines: HeLa HepG2
特記事項	<p>This antibody clone is manufactured by Abcam. If you require a custom buffer formulation or conjugation for your experiments, please contact orders@abcam.com.</p> <p>The Life Science industry has been in the grips of a reproducibility crisis for a number of years. Abcam is leading the way in addressing this with our range of recombinant monoclonal antibodies and knockout edited cell lines for gold-standard validation. Please check that this product meets your needs before purchasing.</p> <p>If you have any questions, special requirements or concerns, please send us an inquiry and/or contact our Support team ahead of purchase. Recommended alternatives for this product can be found below, along with publications, customer reviews and Q&As</p>

製品の特性

製品の状態	Liquid
保存方法	Shipped at 4°C. Store at +4°C short term (1-2 weeks). Upon delivery aliquot. Store at -20°C or -80°C. Avoid freeze / thaw cycle.
バッファー	pH: 7.40 Preservative: 0.02% Sodium azide Constituent: PBS
精製度	Protein G purified
ポリ/モノ	モノクローナル
クローン名	1G11

アプリケーション

The Abpromise guarantee Abpromise保証は、次のテスト済みアプリケーションにおけるab70521の使用に適用されます
アプリケーションノートには、推奨の開始希釈率がありますが、適切な希釈率につきましてはご検討ください。

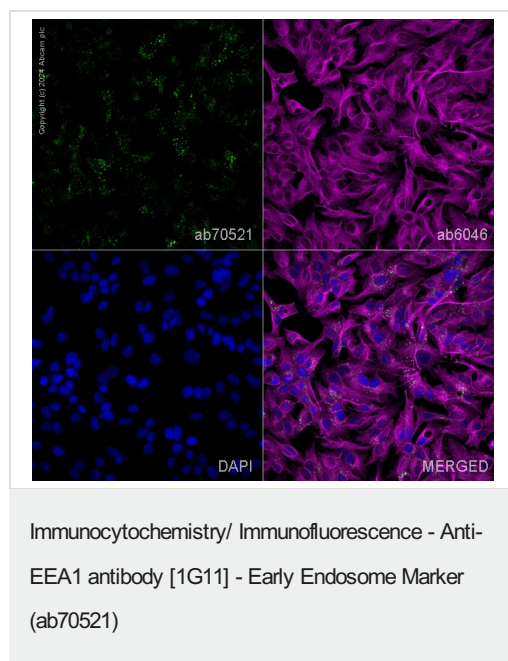
アプリケーション	Abreviews	特記事項
ICC/IF	★★★★☆ (6)	Use a concentration of 1 - 5 µg/ml.

追加情報 Is unsuitable for WB.

ターゲット情報

機能	Binds phospholipid vesicles containing phosphatidylinositol 3-phosphate and participates in endosomal trafficking.
配列類似性	Contains 1 C2H2-type zinc finger. Contains 1 FYVE-type zinc finger.
ドメイン	The FYVE-type zinc finger domain mediates interactions with phosphatidylinositol 3-phosphate in membranes of early endosomes and penetrates bilayers. The FYVE domain insertion into PtdIns(3)P-enriched membranes is substantially increased in acidic conditions.
細胞内局在	Cytoplasm. Early endosome membrane.

画像



ab70521 staining EEA1 in HepG2 cells. The cells were fixed with 4% paraformaldehyde (10 min), permeabilized with 0.1% PBS-Triton X-100 for 5 minutes and then blocked with 1% BSA/10% normal goat serum/0.3M glycine in 0.1%PBS-Tween for 1h. The cells were then incubated overnight at 4°C with ab70521 at 1µg/ml and **ab6046**, Rabbit polyclonal to beta Tubulin - Loading Control. Cells were then incubated with **ab150117**, Goat polyclonal Secondary Antibody to Mouse IgG H&L (Alexa Fluor® 488) preadsorbed at 1/1000 dilution (shown in green) and **ab150080**, Goat polyclonal Secondary Antibody to Rabbit IgG - H&L (Alexa Fluor® 594) at 1/1000 dilution (shown in pseudocolour magenta). Nuclear DNA was labelled with DAPI (shown in blue). Also suitable in cells fixed with 100% methanol (5 min). Image was acquired with a high-content analyser (Operetta CLS, Perkin Elmer) and a maximum intensity projection of confocal sections is shown.

Please note: All products are "FOR RESEARCH USE ONLY. NOT FOR USE IN DIAGNOSTIC PROCEDURES"

Our Abpromise to you: Quality guaranteed and expert technical support

- Replacement or refund for products not performing as stated on the datasheet
- Valid for 12 months from date of delivery
- Response to your inquiry within 24 hours

- We provide support in Chinese, English, French, German, Japanese and Spanish
- Extensive multi-media technical resources to help you
- We investigate all quality concerns to ensure our products perform to the highest standards

If the product does not perform as described on this datasheet, we will offer a refund or replacement. For full details of the Abpromise, please visit <https://www.abcam.co.jp/abpromise> or contact our technical team.

Terms and conditions

- Guarantee only valid for products bought direct from Abcam or one of our authorized distributors