


Anti-EDC4 antibody ab72408

★★★★★ [5 Abreviews](#) [13 References](#) [画像数 4](#)

製品の概要

| | |
|--------------|---|
| 製品名 | Anti-EDC4 antibody |
| 製品の詳細 | Rabbit polyclonal to EDC4 |
| 由来種 | Rabbit |
| アプリケーション | 適用あり: ICC/IF, WB, IP, IHC-P |
| 種交差性 | 交差種: Mouse, Human 交差が予測される動物種: Chimpanzee, Rhesus monkey, Gorilla, Orangutan  |
| 免疫原 | Synthetic peptide corresponding to Human EDC4. Database link: Q6P2E9 |
| ポジティブ・コントロール | WB: HeLa, HEK293T, Jurkat, NIH 3T3 and TCMK-1 cells. IHC-P: human normal skin. IP: HeLa cells. |
| 特記事項 | <p>The Life Science industry has been in the grips of a reproducibility crisis for a number of years. Abcam is leading the way in addressing this with our range of recombinant monoclonal antibodies and knockout edited cell lines for gold-standard validation. Please check that this product meets your needs before purchasing.</p> <p>If you have any questions, special requirements or concerns, please send us an inquiry and/or contact our Support team ahead of purchase. Recommended alternatives for this product can be found below, along with publications, customer reviews and Q&As</p> |

製品の特性

| | |
|--------|---|
| 製品の状態 | Liquid |
| 保存方法 | Shipped at 4°C. Upon delivery aliquot and store at -20°C. Avoid freeze / thaw cycles. |
| バッファー | pH: 6.8 Preservative: 0.09% Sodium azide Constituents: 0.1% BSA, Tris buffered saline |
| 精製度 | Immunogen affinity purified |
| ポリ/モノ | ポリクローナル |
| アイソタイプ | IgG |

アプリケーション

The Abpromise guarantee

Abpromise保証は、次のテスト済みアプリケーションにおけるab72408の使用に適用されます

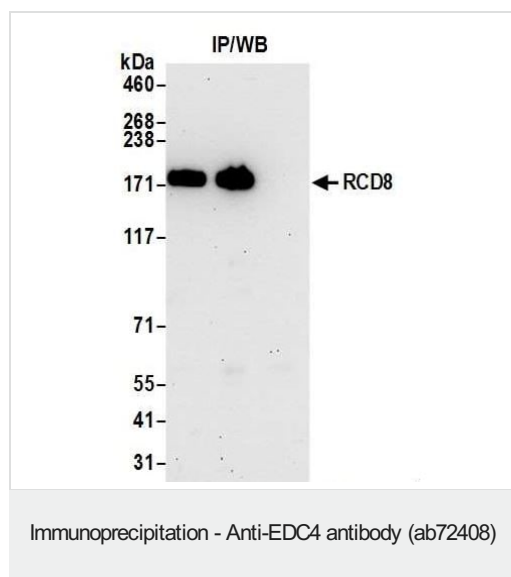
アプリケーションノートには、推奨の開始希釈率がありますが、適切な希釈率につきましてはご確認ください。

| アプリケーション | Abreviews | 特記事項 |
|----------|-----------|--|
| ICC/IF | ★★★★★ (2) | Use at an assay dependent concentration. PubMed: 19729507 |
| WB | ★★★★★ (1) | 1/2000 - 1/10000. Detects a band of approximately 55, 190 kDa (predicted molecular weight: 152 kDa). |
| IP | ★★★★★ (2) | Use at 2-5 µg/mg of lysate. |
| IHC-P | | Use a concentration of 5 µg/ml. Perform heat mediated antigen retrieval with citrate buffer pH 6 before commencing with IHC staining protocol. |

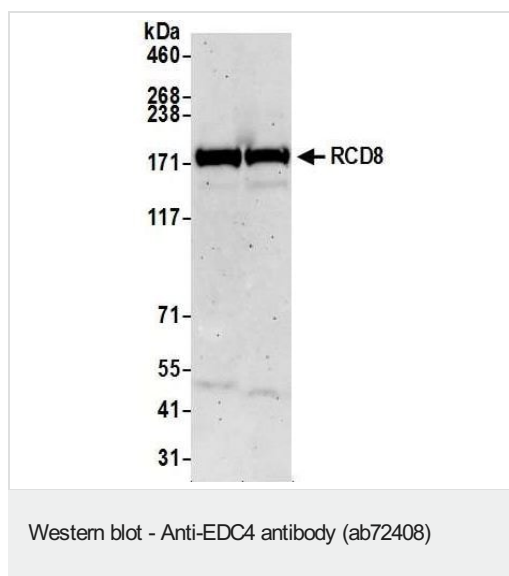
ターゲット情報

| | |
|-------|---|
| 機能 | In the process of mRNA degradation, seems to play a role in mRNA decapping. Component of a complex containing DCP2 and DCP1A which functions in decapping of ARE-containing mRNAs. Promotes complex formation between DCP1A and DCP2. Enhances the catalytic activity of DCP2 (in vitro). |
| 配列類似性 | Belongs to the WD repeat EDC4 family. Contains 4 WD repeats. |
| 翻訳後修飾 | Phosphorylated upon DNA damage, probably by ATM or ATR. |
| 細胞内局在 | Cytoplasm > P-body. Nucleus. |

画像



Immunoprecipitation/ Western Blot of EDC4. Lane 1: ab72408 at 6µg/mg whole cell lysate. Lane 2: Different lot of ab72408 at 6µg/ml for WB. Lane 3: Control IgG. Whole cell lysate from Hela cells at 1mg for IP, 20% of IP loaded. Chemiluminescence with an exposure time of 3 minutes.



All lanes : Anti-EDC4 antibody (ab72408) at 1/2000 dilution

Lane 1 : NIH 3T3 Whole cell lysate

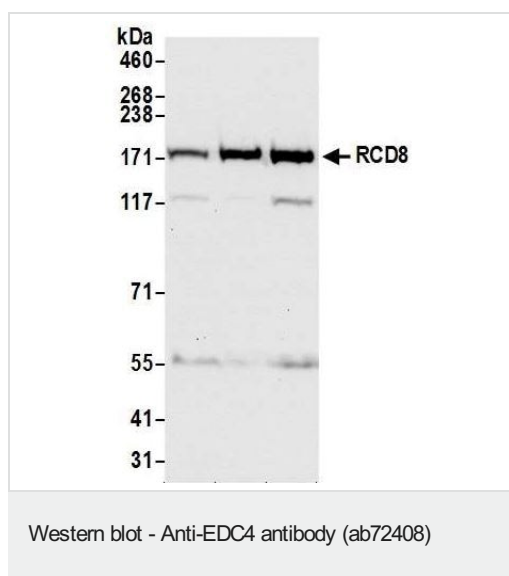
Lane 2 : TCMK-1 Whole cell lysate

Lysates/proteins at 50 µg per lane.

Secondary

All lanes : Goat anti-Rabbit Light Chain HRP Conjugate

Predicted band size: 152 kDa



All lanes : Anti-EDC4 antibody (ab72408) at 1/2000 dilution

Lane 1 : HeLa Whole cell lysate

Lane 2 : HEK293T Whole cell lysate

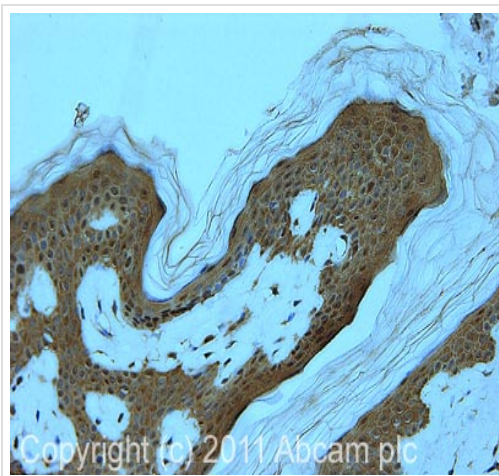
Lane 3 : Jurkat Whole cell lysate

Lysates/proteins at 50 µg per lane.

Secondary

All lanes : Goat anti-Rabbit Light Chain HRP Conjugate

Predicted band size: 152 kDa



Immunohistochemistry (Formalin/PFA-fixed paraffin-embedded sections) - Anti-EDC4 antibody (ab72408)

IHC image of ab72408 staining in human normal skin formalin fixed paraffin embedded tissue section, performed on a Leica Bond™ system using the standard protocol F. The section was pre-treated using heat mediated antigen retrieval with sodium citrate buffer (pH6, epitope retrieval solution 1) for 20 mins. The section was then incubated with ab72408, 5µg/ml, for 15 mins at room temperature and detected using an HRP conjugated compact polymer system. DAB was used as the chromogen. The section was then counterstained with haematoxylin and mounted with DPX.

For other IHC staining systems (automated and non-automated) customers should optimize variable parameters such as antigen retrieval conditions, primary antibody concentration and antibody incubation times.

Please note: All products are "FOR RESEARCH USE ONLY. NOT FOR USE IN DIAGNOSTIC PROCEDURES"

Our Abpromise to you: Quality guaranteed and expert technical support

- Replacement or refund for products not performing as stated on the datasheet
- Valid for 12 months from date of delivery
- Response to your inquiry within 24 hours

- We provide support in Chinese, English, French, German, Japanese and Spanish
- Extensive multi-media technical resources to help you
- We investigate all quality concerns to ensure our products perform to the highest standards

If the product does not perform as described on this datasheet, we will offer a refund or replacement. For full details of the Abpromise, please visit <https://www.abcam.co.jp/abpromise> or contact our technical team.

Terms and conditions

- Guarantee only valid for products bought direct from Abcam or one of our authorized distributors