

Anti-ECH1 antibody [3B7CF2AC8] ab123450

画像数 4

製品の概要

製品名	Anti-ECH1 antibody [3B7CF2AC8]
製品の詳細	Mouse monoclonal [3B7CF2AC8] to ECH1
由来種	Mouse
アプリケーション	適用あり: ICC/IF, IHC-P, WB, Flow Cyt
種交差性	交差種: Rat, Cow, Human
免疫原	Tissue, cells or virus. This information is considered to be commercially sensitive.
ポジティブ・コントロール	HDFn cells; Human, Rat and Cow heart homogenates; Human liver homogenate. This antibody gave a positive result in IHC in the following FFPE tissue: Human normal heart muscle.
特記事項	<p>This antibody clone is manufactured by Abcam. If you require a custom buffer formulation or conjugation for your experiments, please contact <a href="mailto:orders@abcam.com">orders@abcam.com</a>.</p> <p>The Life Science industry has been in the grips of a reproducibility crisis for a number of years. Abcam is leading the way in addressing this with our range of recombinant monoclonal antibodies and knockout edited cell lines for gold-standard validation. Please check that this product meets your needs before purchasing.</p> <p>If you have any questions, special requirements or concerns, please send us an inquiry and/or contact our Support team ahead of purchase. Recommended alternatives for this product can be found below, along with publications, customer reviews and Q&amp;As</p> <p>Product was previously marketed under the MitoSciences sub-brand.</p>

製品の特性

製品の状態	Liquid
保存方法	Shipped at 4°C. Upon delivery aliquot and store at -20°C. Avoid repeated freeze / thaw cycles.
バッファー	pH: 7.5 Preservative: 0.02% Sodium azide Constituent: 99% HEPES buffered saline
精製度	IgG fraction
特記事項 (精製)	Purity is near homogeneity as judged by SDS-PAGE. ab123450 was produced in vitro using hybridomas grown in serum-free medium, and then purified by biochemical fractionation.
ポリ/モノ	モノクローナル

クローン名	3B7CF2AC8
アイソタイプ	IgG2b
軽鎖の種類	kappa

アプリケーション

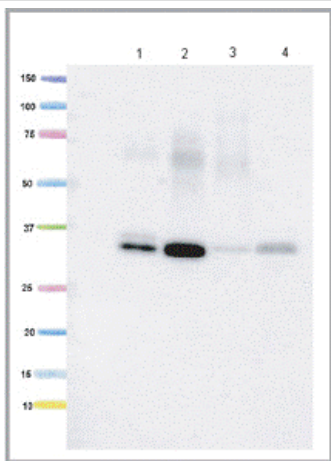
The Abpromise guarantee      Abpromise保証は、次のテスト済みアプリケーションにおけるab123450の使用に適用されます  
 アプリケーションノートには、推奨の開始希釈率がありますが、適切な希釈率につきましてはご検討ください。

アプリケーション	Abreviews	特記事項
ICC/IF		Use a concentration of 1 µg/ml.
IHC-P		Use a concentration of 5 µg/ml.
WB		Use a concentration of 1 µg/ml. Predicted molecular weight: 36 kDa.
Flow Cyt		Use a concentration of 1 µg/ml. <b>ab170192</b> - Mouse monoclonal IgG2b, is suitable for use as an isotype control with this antibody.

ターゲット情報

機能	Isomerization of 3-trans,5-cis-dienoyl-CoA to 2-trans,4-trans-dienoyl-CoA.
パスウェイ	Lipid metabolism; fatty acid beta-oxidation.
配列類似性	Belongs to the enoyl-CoA hydratase/isomerase family.
細胞内局在	Mitochondrion. Peroxisome.

画像



Western blot - Anti-ECH1 antibody [3B7CF2AC8] (ab123450)

**All lanes :** Anti-ECH1 antibody [3B7CF2AC8] (ab123450) at 1  $\mu$ g/ml

**Lane 1 :** Human heart homogenate

**Lane 2 :** Human liver homogenate

**Lane 3 :** Rat heart homogenate

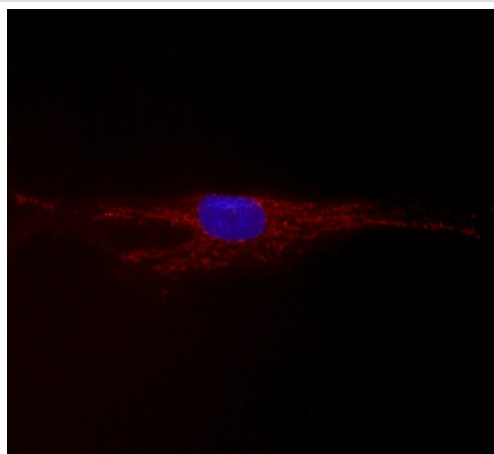
**Lane 4 :** Cow heart homogenate

Lysates/proteins at 10  $\mu$ g/ml per lane.

#### Secondary

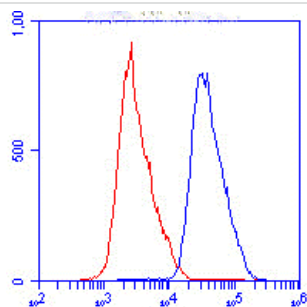
**All lanes :** Goat-anti-Mouse HRP

**Predicted band size:** 36 kDa



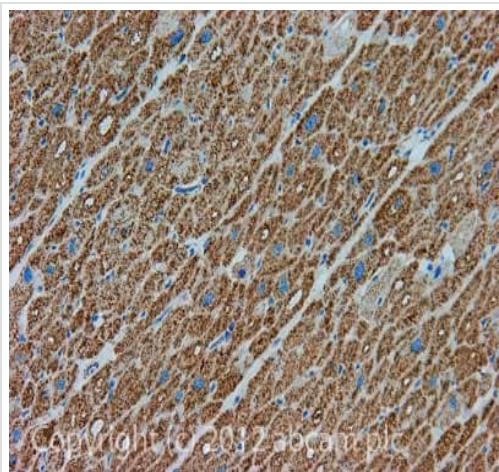
Immunocytochemistry/ Immunofluorescence - Anti-ECH1 antibody [3B7CF2AC8] (ab123450)

ab123450 at 1  $\mu$ g/ml staining ECH1 in 4% paraformaldehyde fixed and 0.1% Triton X-100 permeabilized HDFn cells by Immunocytochemistry followed by Alexa Fluor® 594 goat anti-mouse IgG (H+L) used at a 1/1000 dilution for 1 hour (red). DAPI was used to stain the cell nuclei (blue).



Flow Cytometry - Anti-ECH1 antibody [3B7CF2AC8] (ab123450)

ab123450 at 1  $\mu$ g/ml staining ECH1 in HDFn cells by Flow Cytometry (blue) or no primary antibody control (red).



Immunohistochemistry (Formalin/PFA-fixed paraffin-embedded sections) - Anti-ECH1 antibody [3B7CF2AC8] (ab123450)

IHC image of ECH1 staining in Human normal heart muscle formalin fixed paraffin embedded tissue section, performed on a Leica Bond™ system using the standard protocol F. The section was pre-treated using heat mediated antigen retrieval with sodium citrate buffer (pH6, epitope retrieval solution 1) for 20 mins. The section was then incubated with ab123450, 5µg/ml, for 15 mins at room temperature and detected using an HRP conjugated compact polymer system. DAB was used as the chromogen. The section was then counterstained with haematoxylin and mounted with DPX.

For other IHC staining systems (automated and non-automated) customers should optimize variable parameters such as antigen retrieval conditions, primary antibody concentration and antibody incubation times.

**Please note:** All products are "FOR RESEARCH USE ONLY. NOT FOR USE IN DIAGNOSTIC PROCEDURES"

### Our Abpromise to you: Quality guaranteed and expert technical support

---

- Replacement or refund for products not performing as stated on the datasheet
- Valid for 12 months from date of delivery
- Response to your inquiry within 24 hours
- We provide support in Chinese, English, French, German, Japanese and Spanish
- Extensive multi-media technical resources to help you
- We investigate all quality concerns to ensure our products perform to the highest standards

If the product does not perform as described on this datasheet, we will offer a refund or replacement. For full details of the Abpromise, please visit <https://www.abcam.co.jp/abpromise> or contact our technical team.

### Terms and conditions

---

- Guarantee only valid for products bought direct from Abcam or one of our authorized distributors