

# Anti-E4F1 antibody ab70615

**1** [References](#) **2** [画像数](#)

### 製品の概要

製品名	Anti-E4F1 antibody
製品の詳細	Rabbit polyclonal to E4F1
由来種	Rabbit
アプリケーション	<b>適用あり:</b> WB, IP
種交差性	<b>交差種:</b> Human
免疫原	Synthetic peptide corresponding to Human E4F1. Corresponding to a region between residue 275 and 325 of human E4F1 Database link: <a href="#">Q66K89</a>
ポジティブ・コントロール	HeLa, 293T, and MCF7 whole cell lysates.
特記事項	<p>The Life Science industry has been in the grips of a reproducibility crisis for a number of years. Abcam is leading the way in addressing this with our range of recombinant monoclonal antibodies and knockout edited cell lines for gold-standard validation. Please check that this product meets your needs before purchasing.</p> <p>If you have any questions, special requirements or concerns, please send us an inquiry and/or contact our Support team ahead of purchase. Recommended alternatives for this product can be found below, along with publications, customer reviews and Q&amp;As</p>

### 製品の特性

製品の状態	Liquid
保存方法	Shipped at 4°C. Upon delivery aliquot and store at -20°C. Avoid freeze / thaw cycles.
バッファー	pH: 7 Preservative: 0.09% Sodium azide Constituents: 1.815% Tris, 1.764% Sodium citrate, 0.021% PBS
精製度	Immunogen affinity purified
特記事項 (精製)	ab70615 was affinity purified using an epitope specific to E4F1 immobilized on solid support.
ポリ/モノ	ポリクローナル
アイソタイプ	IgG

### アプリケーション

**The Abpromise guarantee**      **Abpromise保証は、**次のテスト済みアプリケーションにおけるab70615の使用に適用されます  
 アプリケーションノートには、推奨の開始希釈率がありますが、適切な希釈率につきましてはご検討ください。

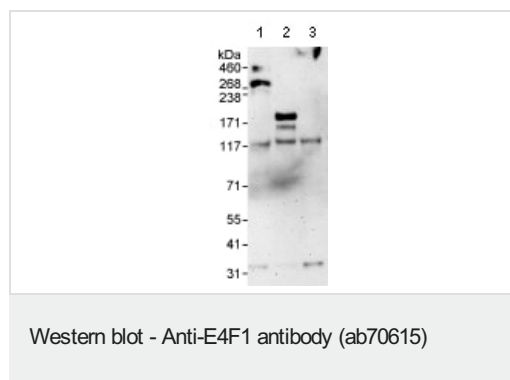
アプリケーション	Abreviews	特記事項
WB		1/2000 - 1/10000. Detects a band of approximately 120 kDa (predicted molecular weight: 84 kDa).
IP		Use at 2 µg/mg of lysate.

## ターゲット情報

**関連性**      E4F1 is a zinc finger transcription factor that inhibits cell proliferation. E4F1 interacts with Bmi1 in hematopoietic cells and is important for the regulation of stem cell proliferation.

**細胞内局在**      Nuclear

## 画像



**All lanes :** Anti-E4F1 antibody (ab70615) at 0.1 µg/ml

**Lane 1 :** HeLa whole cell lysate

**Lane 2 :** 293T whole cell lysate

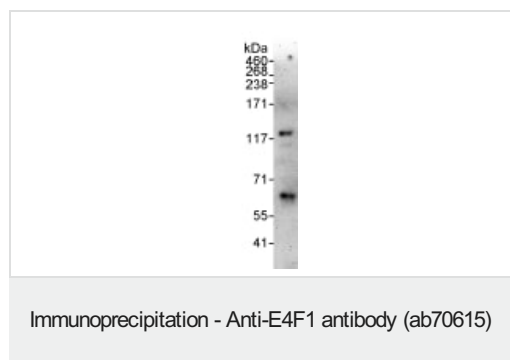
**Lane 3 :** MCF7 whole cell lysate

Lysates/proteins at 50 µg per lane.

**Predicted band size:** 84 kDa

**Observed band size:** 120 kDa

**Exposure time:** 3 minutes



Detection of Human E4F1 by Western Blot of Immunoprecipitate.  
 ab70615 at 1µg/ml staining E4F1 in MCF7 whole cell lysates immunoprecipitated using ab70615 at 3µg/mg lysate (1 mg/IP; 20% of IP loaded/lane). Detection: Chemiluminescence with exposure time of 3 minutes

**Please note:** All products are "FOR RESEARCH USE ONLY. NOT FOR USE IN DIAGNOSTIC PROCEDURES"

### **Our Abpromise to you: Quality guaranteed and expert technical support**

---

- Replacement or refund for products not performing as stated on the datasheet
- Valid for 12 months from date of delivery
- Response to your inquiry within 24 hours
  
- We provide support in Chinese, English, French, German, Japanese and Spanish
- Extensive multi-media technical resources to help you
- We investigate all quality concerns to ensure our products perform to the highest standards

If the product does not perform as described on this datasheet, we will offer a refund or replacement. For full details of the Abpromise, please visit <https://www.abcam.co.jp/abpromise> or contact our technical team.

### **Terms and conditions**

---

- Guarantee only valid for products bought direct from Abcam or one of our authorized distributors