

Anti-E2F6 antibody ab53061

★★★★★ [4 Abreviews](#) [9 References](#) [画像数 5](#)

製品の概要

製品名	Anti-E2F6 antibody
製品の詳細	Rabbit polyclonal to E2F6
由来種	Rabbit
アプリケーション	適用あり: WB, IHC-P
種交差性	交差種: Mouse, Human
免疫原	Synthetic peptide corresponding to Human E2F6 aa 141-190.
特記事項	<p>The Life Science industry has been in the grips of a reproducibility crisis for a number of years. Abcam is leading the way in addressing this with our range of recombinant monoclonal antibodies and knockout edited cell lines for gold-standard validation. Please check that this product meets your needs before purchasing.</p> <p>If you have any questions, special requirements or concerns, please send us an inquiry and/or contact our Support team ahead of purchase. Recommended alternatives for this product can be found below, along with publications, customer reviews and Q&As</p>

製品の特性

製品の状態	Liquid
保存方法	Shipped at 4°C. Store at +4°C short term (1-2 weeks). Upon delivery aliquot. Store at -20°C. Avoid freeze / thaw cycle.
バッファー	pH: 7.40 Preservative: 0.02% Sodium azide Constituents: 0.87% Sodium chloride, 50% Glycerol (glycerin, glycerine), PBS
精製度	Immunogen affinity purified
特記事項 (精製)	The antibody was affinity purified from rabbit antiserum by affinity chromatography using epitope specific immunogen.
ポリ/モノ	ポリクローナル
アイソタイプ	IgG

アプリケーション

The Abpromise guarantee

Abpromise保証は、次のテスト済みアプリケーションにおけるab53061の使用に適用されます

アプリケーションノートには、推奨の開始希釈率がありますが、適切な希釈率につきましてはご確認ください。

アプリケーション	Abreviews	特記事項
WB	★★★★★ (2)	1/500 - 1/1000. Detects a band of approximately 31 kDa (predicted molecular weight: 31 kDa).
IHC-P		1/50 - 1/100.

ターゲット情報

機能

Inhibitor of E2F-dependent transcription. Binds DNA cooperatively with DP proteins through the E2 recognition site, 5'-TTTC[CG]CGC-3'. Has a preference for the 5'-TTTCCCGC-3' E2F recognition site. E2F-6 lacks the transcriptional activation and pocket protein binding domains. Appears to regulate a subset of E2F-dependent genes whose products are required for entry into the cell cycle but not for normal cell cycle progression. May silence expression via the recruitment of a chromatin remodeling complex containing histone H3-K9 methyltransferase activity. Overexpression delays the exit of cells from the S-phase.

組織特異性

Expressed in all tissues examined. Highest levels in placenta, skeletal muscle, heart, ovary, kidney, small intestine and spleen.

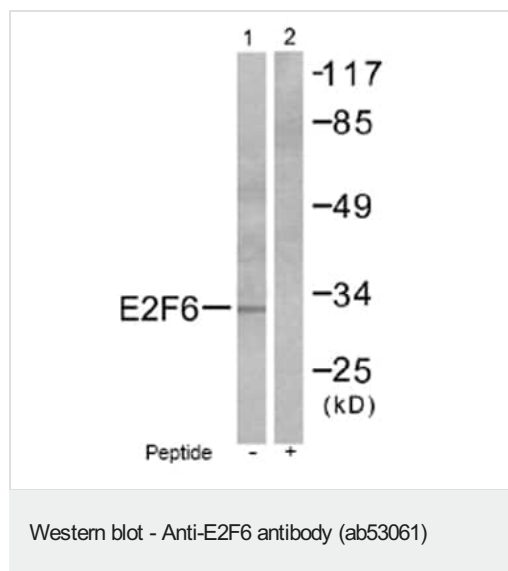
配列類似性

Belongs to the E2F/DP family.

細胞内局在

Nucleus.

画像



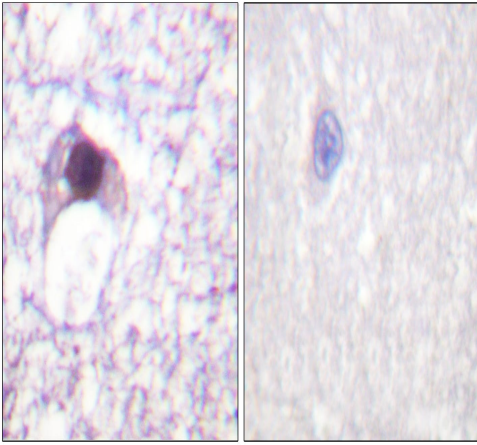
All lanes : Anti-E2F6 antibody (ab53061) at 1/500 dilution

Lane 1 : Extracts of HepG2 cells

Lane 2 : Extracts of HepG2 cells treated with peptide

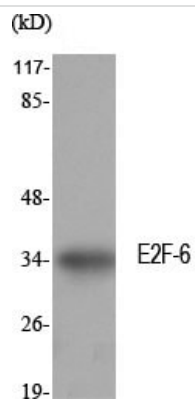
Predicted band size: 31 kDa

Observed band size: 31 kDa



Immunohistochemistry analysis of paraffin-embedded human brain tissue labeling E2F6 with ab53061. The picture on the right is blocked with the synthesized peptide.

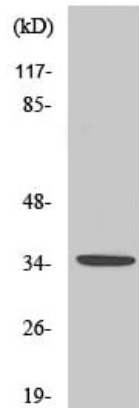
Immunohistochemistry (Formalin/PFA-fixed paraffin-embedded sections) - Anti-E2F6 antibody (ab53061)



Anti-E2F6 antibody (ab53061) at 1/500 dilution + NIH/3T3 cell lysate

Predicted band size: 31 kDa

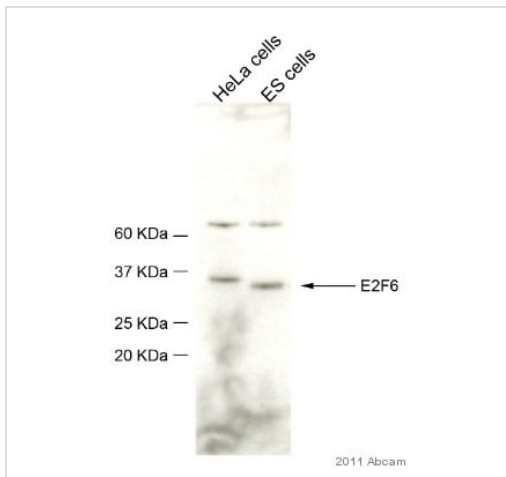
Western blot - Anti-E2F6 antibody (ab53061)



Anti-E2F6 antibody (ab53061) at 1/500 dilution + HepG2 cell lysate

Predicted band size: 31 kDa

Western blot - Anti-E2F6 antibody (ab53061)



Western blot - Anti-E2F6 antibody (ab53061)

This image is courtesy of an Abreview submitted by Dr. Ligia Tavares

All lanes : Anti-E2F6 antibody (ab53061) at 1/500 dilution (in TBS for 16 hours at 4°C)

Lane 1 : HeLa cells

Lane 2 : Cell lysate (nuclear) of mouse embryonic stem cells at 100000 cells

Secondary

All lanes : HRP-conjugated Donkey anti rabbit IgG polyclonal at 1/20000 dilution

Developed using the ECL technique.

Performed under non-reducing conditions.

Predicted band size: 31 kDa

Observed band size: 35 kDa

Additional bands at: 65 kDa. We are unsure as to the identity of these extra bands.

Exposure time: 10 minutes

Blocking Step: 4% Milk for 1 hour at 22°C

Please note: All products are "FOR RESEARCH USE ONLY. NOT FOR USE IN DIAGNOSTIC PROCEDURES"

Our Abpromise to you: Quality guaranteed and expert technical support

- Replacement or refund for products not performing as stated on the datasheet
- Valid for 12 months from date of delivery
- Response to your inquiry within 24 hours
- We provide support in Chinese, English, French, German, Japanese and Spanish
- Extensive multi-media technical resources to help you
- We investigate all quality concerns to ensure our products perform to the highest standards

If the product does not perform as described on this datasheet, we will offer a refund or replacement. For full details of the Abpromise, please visit <https://www.abcam.co.jp/abpromise> or contact our technical team.

Terms and conditions

- Guarantee only valid for products bought direct from Abcam or one of our authorized distributors