

# Anti-E2F2 antibody [2302C4a] ab70731

**1 References** [画像数 1](#)

### 製品の概要

製品名	Anti-E2F2 antibody [2302C4a]
製品の詳細	Mouse monoclonal [2302C4a] to E2F2
由来種	Mouse
アプリケーション	<b>適用あり:</b> WB
種交差性	<b>交差種:</b> Recombinant fragment
免疫原	Recombinant fragment derived from internal sequence of human E2F2.
ポジティブ・コントロール	Recombinant human E2F2.
特記事項	<p>The Life Science industry has been in the grips of a reproducibility crisis for a number of years. Abcam is leading the way in addressing this with our range of recombinant monoclonal antibodies and knockout edited cell lines for gold-standard validation. Please check that this product meets your needs before purchasing.</p> <p>If you have any questions, special requirements or concerns, please send us an inquiry and/or contact our Support team ahead of purchase. Recommended alternatives for this product can be found below, along with publications, customer reviews and Q&amp;As</p>

### 製品の特性

製品の状態	Liquid
保存方法	Shipped at 4°C. Upon delivery aliquot and store at -20°C. Avoid freeze / thaw cycles.
バッファー	<p>pH: 7.40</p> <p>Preservative: 0.05% Sodium azide</p> <p>Constituents: 1% BSA, PBS</p>
精製度	Protein G purified
特記事項 (精製)	ab70731 was purified using protein G column chromatography from culture supernatant of hybridoma cultured in a medium containing bovine IgG-depleted (approximately 95%) fetal bovine serum and filtered through a 0.22µm membrane.
ポリ/モノ	モノクローナル
クローン名	2302C4a
アイソタイプ	IgG2a

## アプリケーション

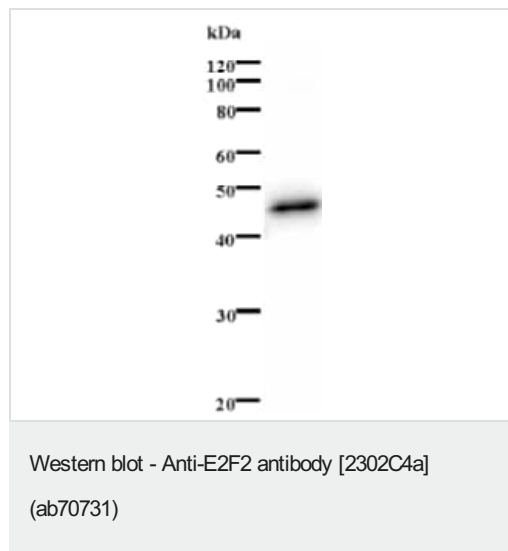
**The Abpromise guarantee**      Abpromise保証は、 次のテスト済みアプリケーションにおけるab70731の使用に適用されます  
アプリケーションノートには、推奨の開始希釈率がありますが、適切な希釈率につきましてはご検討ください。

アプリケーション	Abreviews	特記事項
WB		Use at an assay dependent concentration. Predicted molecular weight: 48 kDa.

## ターゲット情報

機能	Transcription activator that binds DNA cooperatively with DP proteins through the E2 recognition site, 5'-TTTC[CG]CGC-3' found in the promoter region of a number of genes whose products are involved in cell cycle regulation or in DNA replication. The DRTF1/E2F complex functions in the control of cell-cycle progression from g1 to s phase. E2F-2 binds specifically to RB1 protein, in a cell-cycle dependent manner.
組織特異性	Highest level of expression is found in placenta, low levels are found in lung. Found as well in many immortalized cell lines derived from tumor samples.
配列類似性	Belongs to the E2F/DP family.
翻訳後修飾	Phosphorylated by CDK2 and cyclin A-CDK2 in the S-phase.
細胞内局在	Nucleus.

## 画像



Anti-E2F2 antibody [2302C4a] (ab70731) + immunising recombinant protein

**Predicted band size:** 48 kDa

**Observed band size:** 48 kDa

**Please note:** All products are "FOR RESEARCH USE ONLY. NOT FOR USE IN DIAGNOSTIC PROCEDURES"

## Our Abpromise to you: Quality guaranteed and expert technical support

- Replacement or refund for products not performing as stated on the datasheet

- Valid for 12 months from date of delivery
- Response to your inquiry within 24 hours
- We provide support in Chinese, English, French, German, Japanese and Spanish
- Extensive multi-media technical resources to help you
- We investigate all quality concerns to ensure our products perform to the highest standards

If the product does not perform as described on this datasheet, we will offer a refund or replacement. For full details of the Abpromise, please visit <https://www.abcam.co.jp/abpromise> or contact our technical team.

#### **Terms and conditions**

---

- Guarantee only valid for products bought direct from Abcam or one of our authorized distributors