

### Anti-E2F1 (phospho S364) antibody ab5391

★★★★★ [1 Abreviews](#) [5 References](#) [画像数 2](#)

#### 製品の概要

製品名	Anti-E2F1 (phospho S364) antibody
製品の詳細	Rabbit polyclonal to E2F1 (phospho S364)
由来種	Rabbit
特異性	This antibody is specific for the phosphorylated form of E2F1. Minimal cross-reactivity is seen with non-phosphorylated human E2F1 by peptide ELISA.
アプリケーション	<b>適用あり:</b> IHC-P, WB
種交差性	<b>交差種:</b> Mouse, Human
免疫原	Synthetic peptide corresponding to Human E2F1 aa 350-450 (phospho S364) conjugated to keyhole limpet haemocyanin.
	<a href="#">📄 Run BLAST with</a> <a href="#">📄 Run BLAST with</a>
特記事項	<p>The Life Science industry has been in the grips of a reproducibility crisis for a number of years. Abcam is leading the way in addressing this with our range of recombinant monoclonal antibodies and knockout edited cell lines for gold-standard validation. Please check that this product meets your needs before purchasing.</p> <p>If you have any questions, special requirements or concerns, please send us an inquiry and/or contact our Support team ahead of purchase. Recommended alternatives for this product can be found below, along with publications, customer reviews and Q&amp;As</p>

#### 製品の特性

製品の状態	Liquid
保存方法	Shipped at 4°C. Store at +4°C short term (1-2 weeks). Upon delivery aliquot. Store at -20°C or -80°C. Avoid freeze / thaw cycle.
バッファー	Preservative: 0.01% Sodium azide Constituents: 0.42% Potassium phosphate, 0.87% Sodium chloride
精製度	Immunogen affinity purified
ポリ/モノ	ポリクローナル
アイソタイプ	IgG

#### アプリケーション

## The Abpromise guarantee

**Abpromise保証は、次のテスト済みアプリケーションにおけるab5391の使用に適用されます**

アプリケーションノートには、推奨の開始希釈率がありますが、適切な希釈率につきましてはご検討ください。

アプリケーション	Abreviews	特記事項
IHC-P		Use at an assay dependent concentration.
WB	★★★★★ (1)	1/250. Detects a band of approximately 47 kDa (predicted molecular weight: 47 kDa).

## ターゲット情報

### 機能

Transcription activator that binds DNA cooperatively with dp proteins through the E2 recognition site, 5'-TTTC[CG]CGC-3' found in the promoter region of a number of genes whose products are involved in cell cycle regulation or in DNA replication. The DRTF1/E2F complex functions in the control of cell-cycle progression from G1 to S phase. E2F-1 binds preferentially RB1 protein, in a cell-cycle dependent manner. It can mediate both cell proliferation and p53-dependent apoptosis.

### 配列類似性

Belongs to the E2F/DP family.

### 翻訳後修飾

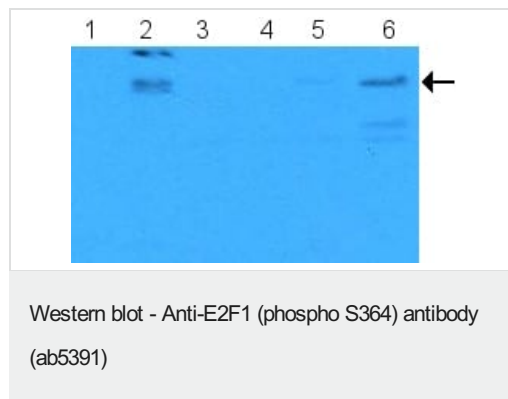
Phosphorylated by CDK2 and cyclin A-CDK2 in the S-phase.

Acetylation stimulates DNA-binding. Enhanced under stress conditions such as DNA damage and inhibited by retinoblastoma protein pRB. Regulated by KAP1/TRIM28 which recruits HDAC1 to E2F1 resulting in deacetylation. Acetylated by P/CAF/KAT2B.

### 細胞内局在

Nucleus.

## 画像



**All lanes :** Anti-E2F1 (phospho S364) antibody (ab5391) at 1/250 dilution

**Lane 1 :** CRE (mouse) cells transfected with human E2F1

**Lane 2 :** CRE (mouse) cells transfected with human E2F1 with doxorubicin

**Lane 3 :** NiH3T3 (mouse) cell lysate

**Lane 4 :** NiH3T3 (mouse) cell lysate with doxorubicin

**Lane 5 :** MDA-231 (human breast cancer) cell lysate

**Lane 6 :** MDA-231 (human breast cancer) cell lysate with doxorubicin

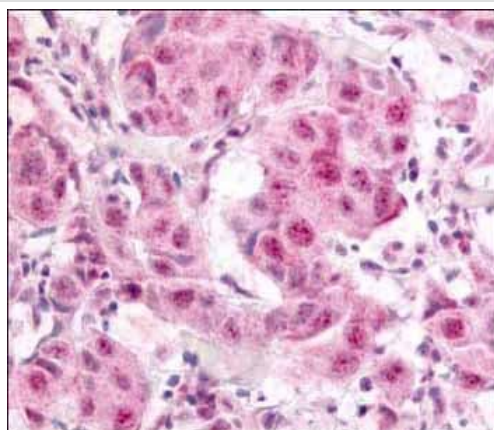
### Secondary

**All lanes :** HRP conjugated Goat-anti-Rabbit IgG MX10

**Predicted band size:** 47 kDa

Lysates were prepared from untreated cells and cells treated with 2 $\mu$ M Doxorubicin used as a DNA damaging agent. The arrow indicates E2F1.

Phosphorylated E2F1 was only expressed in the treated cells. The blot clearly shows that ab5391 only detected phosphorylated E2F1 in the human cell lines.



ab5391 at 10  $\mu$ g/ml staining human breast carcinoma.

Immunohistochemistry (Formalin/PFA-fixed paraffin-embedded sections) - Anti-E2F1 (phospho S364) antibody (ab5391)

**Please note:** All products are "FOR RESEARCH USE ONLY. NOT FOR USE IN DIAGNOSTIC PROCEDURES"

### Our Abpromise to you: Quality guaranteed and expert technical support

---

- Replacement or refund for products not performing as stated on the datasheet
- Valid for 12 months from date of delivery
- Response to your inquiry within 24 hours
- We provide support in Chinese, English, French, German, Japanese and Spanish
- Extensive multi-media technical resources to help you
- We investigate all quality concerns to ensure our products perform to the highest standards

If the product does not perform as described on this datasheet, we will offer a refund or replacement. For full details of the Abpromise, please visit <https://www.abcam.co.jp/abpromise> or contact our technical team.

### Terms and conditions

---

- Guarantee only valid for products bought direct from Abcam or one of our authorized distributors