

Anti-E2F1 (phospho S364) antibody [2] ab122888

画像数 1

製品の概要

製品名	Anti-E2F1 (phospho S364) antibody [2]
製品の詳細	Mouse monoclonal [2] to E2F1 (phospho S364)
由来種	Mouse
アプリケーション	適用あり: WB
種交差性	交差種: Human
免疫原	Synthetic peptide corresponding to Human E2F1. A synthetic peptide corresponding to a sequence of Human E2F1 protein including and surrounding phospho-Ser364
ポジティブ・コントロール	MCF cells treated with etoposide at 10 μ M for 16 h
特記事項	<p>The Life Science industry has been in the grips of a reproducibility crisis for a number of years. Abcam is leading the way in addressing this with our range of recombinant monoclonal antibodies and knockout edited cell lines for gold-standard validation. Please check that this product meets your needs before purchasing.</p> <p>If you have any questions, special requirements or concerns, please send us an inquiry and/or contact our Support team ahead of purchase. Recommended alternatives for this product can be found below, along with publications, customer reviews and Q&As</p>

製品の特性

製品の状態	Liquid
保存方法	Shipped at 4°C. Upon delivery aliquot and store at -80°C. Avoid freeze / thaw cycles.
バッファー	pH: 6 Constituents: 49% PBS, 50% Glycerol (glycerin, glycerine)
精製度	Ion Exchange Chromatography
特記事項(精製)	Produced in serum-free medium and purified under mild conditions
ポリ/モノ	モノクローナル
クローン名	2
アイソタイプ	IgG2b
軽鎖の種類	kappa

アプリケーション

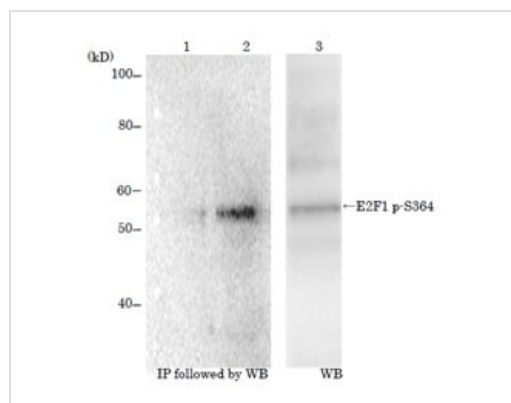
The Abpromise guarantee Abpromise保証は、次のテスト済みアプリケーションにおけるab122888の使用に適用されず
アプリケーションノートには、推奨の開始希釈率がありますが、適切な希釈率につきましてはご検討ください。

アプリケーション	Abreviews	特記事項
WB		Use a concentration of 1 µg/ml. Predicted molecular weight: 47 kDa.

ターゲット情報

機能	Transcription activator that binds DNA cooperatively with dp proteins through the E2 recognition site, 5'-TTTC[CG]CGC-3' found in the promoter region of a number of genes whose products are involved in cell cycle regulation or in DNA replication. The DRTF1/E2F complex functions in the control of cell-cycle progression from G1 to S phase. E2F-1 binds preferentially RB1 protein, in a cell-cycle dependent manner. It can mediate both cell proliferation and p53-dependent apoptosis.
配列類似性	Belongs to the E2F/DP family.
翻訳後修飾	Phosphorylated by CDK2 and cyclin A-CDK2 in the S-phase. Acetylation stimulates DNA-binding. Enhanced under stress conditions such as DNA damage and inhibited by retinoblastoma protein pRB. Regulated by KAP1/TRIM28 which recruits HDAC1 to E2F1 resulting in deacetylation. Acetylated by P/CAF/KAT2B.
細胞内局在	Nucleus.

画像



Western blot - Anti-E2F1 (phospho S364) antibody [2] (ab122888)

All lanes : Anti-E2F1 (phospho S364) antibody [2] (ab122888) at 1 µg/ml

Lane 1 : Untreated MCF cells immunoprecipitated with a pantropic anti-E2F1 antibody

Lane 2 : MCF cells treated with etoposide at 10 µM for 16 h, immunoprecipitated with a pantropic anti-E2F1 antibody

Lane 3 : MCF cells treated with etoposide at 10 µM for 16 h

Predicted band size: 47 kDa

Please note: All products are "FOR RESEARCH USE ONLY. NOT FOR USE IN DIAGNOSTIC PROCEDURES"

Our Abpromise to you: Quality guaranteed and expert technical support

- Replacement or refund for products not performing as stated on the datasheet

- Valid for 12 months from date of delivery
- Response to your inquiry within 24 hours

- We provide support in Chinese, English, French, German, Japanese and Spanish
- Extensive multi-media technical resources to help you
- We investigate all quality concerns to ensure our products perform to the highest standards

If the product does not perform as described on this datasheet, we will offer a refund or replacement. For full details of the Abpromise, please visit <https://www.abcam.co.jp/abpromise> or contact our technical team.

Terms and conditions

- Guarantee only valid for products bought direct from Abcam or one of our authorized distributors