

Anti-E-Syt1 antibody ab118805

1 [References](#) [画像数](#) **2**

製品の概要

製品名	Anti-E-Syt1 antibody
製品の詳細	Rabbit polyclonal to E-Syt1
由来種	Rabbit
アプリケーション	適用あり: WB, IP
種交差性	交差種: Human
免疫原	Synthetic peptide corresponding to Human E-Syt1 aa 1054-1104. Database link: NP_056107.1
ポジティブ・コントロール	HeLa, 293T and Jurkat whole cell lysates.
特記事項	<p>The Life Science industry has been in the grips of a reproducibility crisis for a number of years. Abcam is leading the way in addressing this with our range of recombinant monoclonal antibodies and knockout edited cell lines for gold-standard validation. Please check that this product meets your needs before purchasing.</p> <p>If you have any questions, special requirements or concerns, please send us an inquiry and/or contact our Support team ahead of purchase. Recommended alternatives for this product can be found below, along with publications, customer reviews and Q&As</p>

製品の特性

製品の状態	Liquid
保存方法	Shipped at 4°C. Upon delivery aliquot and store at -20°C. Avoid freeze / thaw cycles.
バッファー	<p>pH: 7</p> <p>Preservative: 0.09% Sodium azide</p> <p>Constituent: 99% Tris citrate/phosphate</p>
精製度	pH 7 to 8 Immunogen affinity purified
特記事項 (精製)	ab118805 was affinity purified using an epitope specific to E-Syt1 immobilized on solid support.
ポリ/モノ	ポリクローナル
アイソタイプ	IgG

アプリケーション

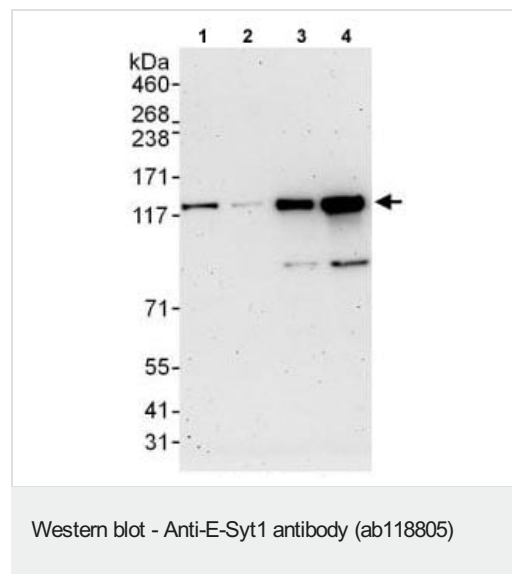
The Abpromise guarantee Abpromise保証は、 次のテスト済みアプリケーションにおけるab118805の使用に適用されます
アプリケーションノートには、推奨の開始希釈率がありますが、適切な希釈率につきましてはご検討ください。

アプリケーション	Abreviews	特記事項
WB		1/2000 - 1/10000. Predicted molecular weight: 123 kDa.
IP		Use at 2-10 µg/mg of lysate.

ターゲット情報

機能	May play a role as calcium-regulated intrinsic membrane protein.
組織特異性	Widely expressed.
配列類似性	Belongs to the extended synaptotagmin family. Contains 5 C2 domains.
細胞内局在	Membrane. Localizes to intracellular membranes.

画像



All lanes : Anti-E-Syt1 antibody (ab118805) at 0.1 µg/ml

Lane 1 : HeLa whole cell lysate at 50 µg

Lane 2 : HeLa whole cell lysate at 15 µg

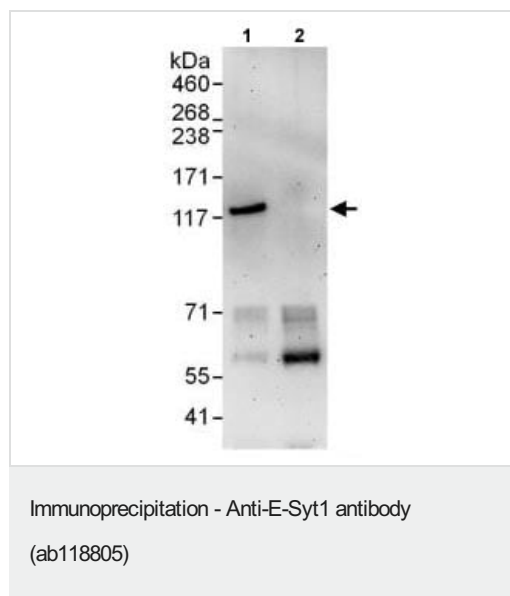
Lane 3 : 293T whole cell lysate at 50 µg

Lane 4 : Jurkat whole cell lysate at 50 µg

Developed using the ECL technique.

Predicted band size: 123 kDa

Exposure time: 3 minutes



Detection of E-Syt1 in Immunoprecipitates of HeLa whole cell lysates (1 mg for IP, 20% of IP loaded) using ab118805 at 6 µg/mg lysate for IP (Lane 1) and at 1 µg/ml for subsequent Western blot detection. Lane 2 represents control IgG IP.
Detection: Chemiluminescence with an exposure time of 3 minutes.

Please note: All products are "FOR RESEARCH USE ONLY. NOT FOR USE IN DIAGNOSTIC PROCEDURES"

Our Abpromise to you: Quality guaranteed and expert technical support

- Replacement or refund for products not performing as stated on the datasheet
- Valid for 12 months from date of delivery
- Response to your inquiry within 24 hours
- We provide support in Chinese, English, French, German, Japanese and Spanish
- Extensive multi-media technical resources to help you
- We investigate all quality concerns to ensure our products perform to the highest standards

If the product does not perform as described on this datasheet, we will offer a refund or replacement. For full details of the Abpromise, please visit <https://www.abcam.co.jp/abpromise> or contact our technical team.

Terms and conditions

- Guarantee only valid for products bought direct from Abcam or one of our authorized distributors