


Anti-e-LOX-3 antibody ab118470

3 References [画像数 2](#)

医薬用外毒物

製品の概要

製品名	Anti-e-LOX-3 antibody
製品の詳細	Rabbit polyclonal to e-LOX-3
由来種	Rabbit
アプリケーション	適用あり: WB, IHC-P
種交差性	交差種: Human 交差が予測される動物種: Mouse, Rat 
免疫原	Recombinant fragment corresponding to Human e-LOX-3.
ポジティブ・コントロール	Human fetal lung lysate, Human fetal skin tissue
特記事項	<p>The Life Science industry has been in the grips of a reproducibility crisis for a number of years. Abcam is leading the way in addressing this with our range of recombinant monoclonal antibodies and knockout edited cell lines for gold-standard validation. Please check that this product meets your needs before purchasing.</p> <p>If you have any questions, special requirements or concerns, please send us an inquiry and/or contact our Support team ahead of purchase. Recommended alternatives for this product can be found below, along with publications, customer reviews and Q&As</p>

製品の特性

製品の状態	Lyophilized:Reconstitute in 200µl Steriled Distilled Water
保存方法	Shipped at 4°C. Upon delivery aliquot and store at -20°C. Avoid freeze / thaw cycles.
バッファー	pH: 7.20 Preservative: 0.02% Sodium azide Constituent: 1% BSA
精製度	Immunogen affinity purified
ポリ/モノ	ポリクローナル
アイソタイプ	IgG

アプリケーション

The Abpromise guarantee

Abpromise保証は、次のテスト済みアプリケーションにおけるab118470の使用に適用されます

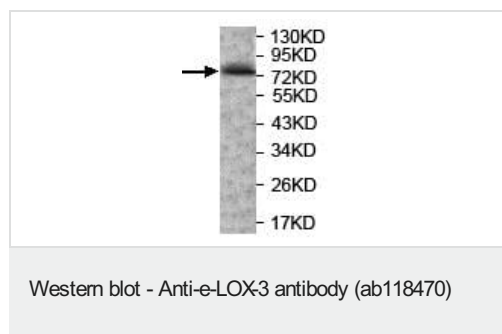
アプリケーションノートには、推奨の開始希釈率がありますが、適切な希釈率につきましてはご確認ください。

アプリケーション	Abreviews	特記事項
WB		1/500 - 1/1000. Predicted molecular weight: 81 kDa.
IHC-P		1/100 - 1/500.

ターゲット情報

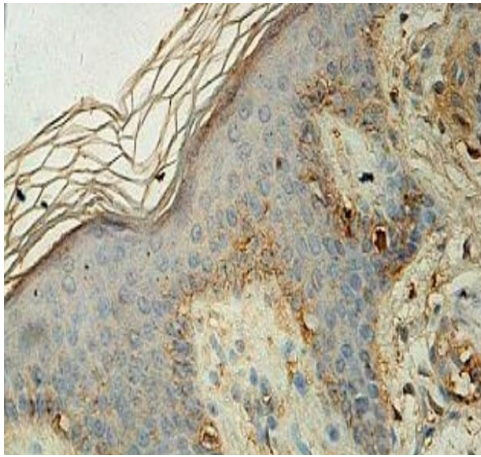
機能	Introduces molecular oxygen into polyunsaturated fatty acids. Exact substrate is not known.
組織特異性	Predominantly expressed in skin.
パスウェイ	Lipid metabolism; leukotriene D4 biosynthesis.
関連疾患	Defects in ALOXE3 are a cause of non-bullous congenital ichthyosiform erythroderma (NCIE) [MIM:242100]. NCIE is a non-bullous ichthyosis, a skin disorder characterized by abnormal cornification of the epidermis. Most affected individuals are born with a tight, shiny, translucent covering called collodion membrane. The collodion membrane subsequently evolves into generalized scaling and intense redness of the skin. Clinical features are milder than in lamellar ichthyoses and demonstrate a greater variability in the intensity of erythema, size and type of scales. In contrast to lamellar ichthyoses, scales are usually white, fine and powdery, and palms and soles are severely affected. Patients suffer from palmoplantar keratoderma, often with painful fissures, digital contractures, and loss of pulp volume.
配列類似性	Belongs to the lipoxygenase family. Contains 1 lipoxygenase domain. Contains 1 PLAT domain.

画像



Anti-e-LOX-3 antibody (ab118470) at 1/500 dilution + Human fetal lung lysate

Predicted band size: 81 kDa



Staining of Human e-LOX-3 in a Formalin/PFA-fixed paraffin-embedded section of Human fetal skin using ab118470 at a dilution of 1/100.

Immunohistochemistry (Formalin/PFA-fixed paraffin-embedded sections) - Anti-e-LOX-3 antibody (ab118470)

Please note: All products are "FOR RESEARCH USE ONLY. NOT FOR USE IN DIAGNOSTIC PROCEDURES"

Our Abpromise to you: Quality guaranteed and expert technical support

- Replacement or refund for products not performing as stated on the datasheet
- Valid for 12 months from date of delivery
- Response to your inquiry within 24 hours
- We provide support in Chinese, English, French, German, Japanese and Spanish
- Extensive multi-media technical resources to help you
- We investigate all quality concerns to ensure our products perform to the highest standards

If the product does not perform as described on this datasheet, we will offer a refund or replacement. For full details of the Abpromise, please visit <https://www.abcam.co.jp/abpromise> or contact our technical team.

Terms and conditions

- Guarantee only valid for products bought direct from Abcam or one of our authorized distributors