

Anti-Dynorphin A antibody ab97798

面格粉 1

医薬用外劇物

製品の概要

製品名	Anti-Dynorphin A antibody
製品の詳細	Rabbit polyclonal to ProDynorphin
由来種	Rabbit
アプリケーション	適用あり: WB
種交差性	交差種: Human
免疫原	Recombinant fragment, corresponding to a region within amino acids 1-166 of Human Dynorphin A (AAH26334)
ポジティブ・コントロール	HepG2, MOLT4 or Raji lysates
特記事項	<p>The Life Science industry has been in the grips of a reproducibility crisis for a number of years. Abcam is leading the way in addressing this with our range of recombinant monoclonal antibodies and knockout edited cell lines for gold-standard validation. Please check that this product meets your needs before purchasing.</p> <p>If you have any questions, special requirements or concerns, please send us an inquiry and/or contact our Support team ahead of purchase. Recommended alternatives for this product can be found below, along with publications, customer reviews and Q&As</p>

製品の特性

製品の状態	Liquid
保存方法	Shipped at 4°C. Upon delivery aliquot. Store at -20°C or -80°C. Avoid freeze / thaw cycle.
バッファー	<p>pH: 7.00</p> <p>Preservative: 0.01% Thimerosal (merthiolate)</p> <p>Constituents: 89.99% PBS, 10% Glycerol (glycerin, glycerine)</p>
精製度	Immunogen affinity purified
ポリ/モノ	ポリクローナル
アイソタイプ	IgG

アプリケーション

The Abpromise guarantee

Abpromise保証は、次のテスト済みアプリケーションにおけるab97798の使用に適用されます

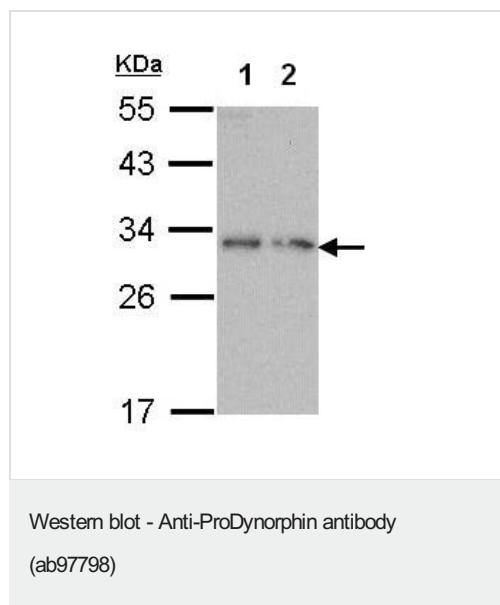
アプリケーションノートには、推奨の開始希釈率がありますが、適切な希釈率につきましてはご確認ください。

アプリケーション	Abreviews	特記事項
WB		1/500 - 1/3000. Predicted molecular weight: 28 kDa.

ターゲット情報

機能	Leu-enkephalins compete with and mimic the effects of opiate drugs. They play a role in a number of physiologic functions, including pain perception and responses to stress. Dynorphin peptides differentially regulate the kappa opioid receptor. Dynorphin A(1-13) has a typical opiod activity, it is 700 times more potent than Leu-enkephalin. Leumorphin has a typical opiod activity and may have anti-apoptotic effect.
関連疾患	Defects in PDYN are the cause of spinocerebellar ataxia type 23 (SCA23) [MIM:610245]. Spinocerebellar ataxia is a clinically and genetically heterogeneous group of cerebellar disorders. Patients show progressive incoordination of gait and often poor coordination of hands, speech and eye movements, due to degeneration of the cerebellum with variable involvement of the brainstem and spinal cord. SCA23 is an adult-onset autosomal dominant form characterized by slowly progressive gait and limb ataxia, with variable additional features, including peripheral neuropathy and dysarthria.
配列類似性	Belongs to the opioid neuropeptide precursor family.
翻訳後修飾	The N-terminal domain contains 6 conserved cysteines thought to be involved in disulfide bonding and/or processing.
細胞内局在	Secreted.

画像



All lanes : Anti-Dynorphin A antibody (ab97798) at 1/1000 dilution

Lane 1 : Molt-4 whole cell lysate

Lane 2 : Raji whole cell lysate

Lysates/proteins at 30 µg per lane.

Predicted band size: 28 kDa

12% SDS PAGE

Please note: All products are "FOR RESEARCH USE ONLY. NOT FOR USE IN DIAGNOSTIC PROCEDURES"

Our Abpromise to you: Quality guaranteed and expert technical support

- Replacement or refund for products not performing as stated on the datasheet
- Valid for 12 months from date of delivery
- Response to your inquiry within 24 hours

- We provide support in Chinese, English, French, German, Japanese and Spanish
- Extensive multi-media technical resources to help you
- We investigate all quality concerns to ensure our products perform to the highest standards

If the product does not perform as described on this datasheet, we will offer a refund or replacement. For full details of the Abpromise, please visit <https://www.abcam.co.jp/abpromise> or contact our technical team.

Terms and conditions

- Guarantee only valid for products bought direct from Abcam or one of our authorized distributors