

Anti-DYNLT3 antibody ab121209

5 References [画像数 4](#)

製品の概要

製品名	Anti-DYNLT3 antibody
製品の詳細	Rabbit polyclonal to DYNLT3
由来種	Rabbit
アプリケーション	適用あり: IHC-P, WB
種交差性	交差種: Mouse, Rat, Human
免疫原	antigen sequence: DEVGFNAEEA HNVKECVDG VLGGEDYNHN NINQWTASIV EQSLTHLVKL GKAYKYVTC AVVQKSAYGF HTASSCFWDT TSDGTCTVRW E, corresponding to amino acids 9-99 of Human DYNLT3. Run BLAST with ExpASY Run BLAST with NCBI
ポジティブ・コントロール	WB: Wild-type HeLa, SK-MEL-20, MCF-7, and NBT-II whole cell lysates; IHC-P: Human cerebral cortex tissue.
特記事項	<p>The Life Science industry has been in the grips of a reproducibility crisis for a number of years. Abcam is leading the way in addressing this with our range of recombinant monoclonal antibodies and knockout edited cell lines for gold-standard validation. Please check that this product meets your needs before purchasing.</p> <p>If you have any questions, special requirements or concerns, please send us an inquiry and/or contact our Support team ahead of purchase. Recommended alternatives for this product can be found below, along with publications, customer reviews and Q&As</p>

製品の特性

製品の状態	Liquid
保存方法	Shipped at 4°C. Upon delivery aliquot and store at -20°C. Avoid freeze / thaw cycles.
バッファー	pH: 7.20 Preservative: 0.02% Sodium azide Constituents: 59% PBS, 40% Glycerol (glycerin, glycerine)
精製度	Immunogen affinity purified
ポリ/モノ	ポリクローナル
アイソタイプ	IgG

アプリケーション

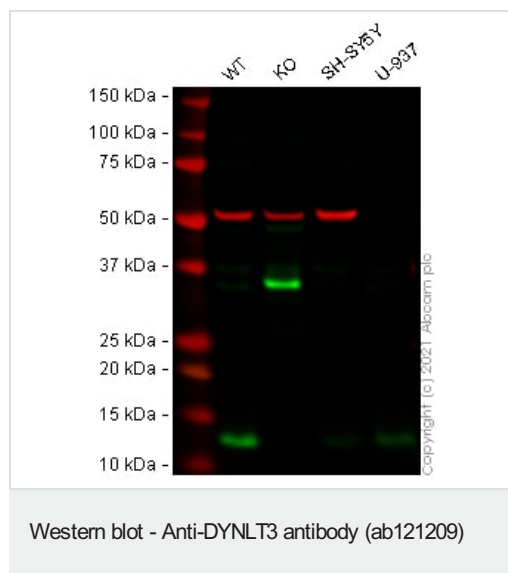
The Abpromise guarantee **Abpromise保証は、次のテスト済みアプリケーションにおけるab121209の使用に適用されず**
アプリケーションノートには、推奨の開始希釈率がありますが、適切な希釈率につきましてはご検討ください。

アプリケーション	Abreviews	特記事項
IHC-P		1/1000 - 1/2500. Perform heat mediated antigen retrieval with citrate buffer pH 6 before commencing with IHC staining protocol.
WB		Use a concentration of 0.04 - 0.4 µg/ml.

ターゲット情報

機能	Acts as one of several non-catalytic accessory components of the cytoplasmic dynein 1 complex that are thought to be involved in linking dynein to cargos and to adapter proteins that regulate dynein function. Cytoplasmic dynein 1 acts as a motor for the intracellular retrograde motility of vesicles and organelles along microtubules. Probably binds BUB3 as part of transport cargo. Required for the efficient progression through mitosis.
配列類似性	Belongs to the dynein light chain Tctex-type family.
細胞内局在	Nucleus. Cytoplasm > cytoskeleton. Chromosome > centromere > kinetochore. Colocalizes with BUB3 at kinetochores specifically during prometaphase.

画像



All lanes : Anti-DYNLT3 antibody (ab121209) at 0.04 µg/ml

Lane 1 : Wild-type HeLa cell lysate

Lane 2 : DYNLT3 knockout HeLa cell lysate

Lane 3 : SH-SY5Y cell lysate

Lane 4 : U937 cell lysate

Lysates/proteins at 20 µg per lane.

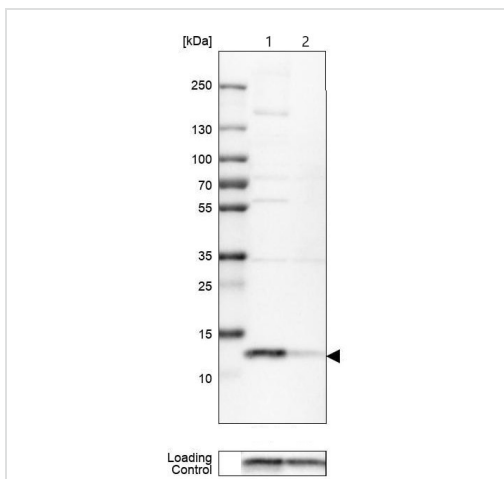
Performed under reducing conditions.

Observed band size: 13 kDa

False colour image of Western blot: Anti-DYNLT3 antibody (ab121209) staining at 0.04 µg/ml, shown in green; Mouse anti-Alpha Tubulin [DM1A] (ab7291) loading control staining at 1/20000 dilution, shown in red.

In Western blot, ab121209 was shown to bind specifically to

DYNLT3. A band was observed at 13 kDa in wild-type HeLa cell lysates with no signal observed at this size in DYNLT3 CRISPR-Cas9 edited cell lysates. The band observed in the CRISPR-Cas9 edited lysate lane above 13 kDa is likely to represent DYNLT3 with an insertion. This has not been investigated further and the functional properties of the gene product have not been determined. To generate this image, wild-type and DYNLT3 CRISPR-Cas9 edited HeLa cell lysates were analysed. First, samples were run on an SDS-PAGE gel then transferred onto a nitrocellulose membrane. Membranes were blocked in 3 % milk in TBS-0.1 % Tween® (TBS-T) before incubation with primary antibodies overnight at 4 °C. Blots were washed four times in TBS-T, incubated with secondary antibodies for 1 h at room temperature, washed again four times then imaged. Secondary antibodies used were Goat anti-Rabbit IgG H&L (IRDye® 800CW) preabsorbed ([ab216773](#)) and Goat anti-Mouse IgG H&L (IRDye® 680RD) preabsorbed ([ab216776](#)) at 1/20000 dilution.



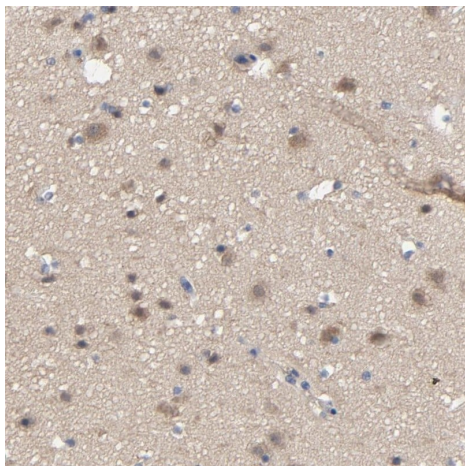
Western blot - Anti-DYNLT3 antibody (ab121209)

All lanes : Anti-DYNLT3 antibody (ab121209)

Lane 1 : SK-MEL-30 (human melanoma cell line) whole cell lysate

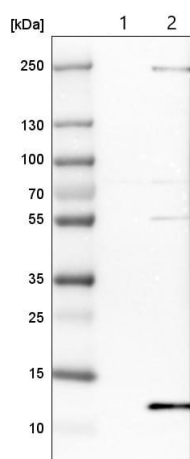
Lane 2 : MCF7 (human breast adenocarcinoma cell line) whole cell lysate

Loading control: Anti-PFN1.



Immunohistochemistry (Formalin/PFA-fixed paraffin-embedded sections) - Anti-DYNLT3 antibody (ab121209)

ab121209 at 1/750 dilution staining DYNLT3 in Paraffin-embedded Human cerebral cortex tissue by Immunohistochemistry.



Western blot - Anti-DYNLT3 antibody (ab121209)

All lanes : Anti-DYNLT3 antibody (ab121209)

Lane 1 : NIH/3T3 (mouse embryo fibroblast cell line) whole cell lysate

Lane 2 : NBT-II (rat urinary bladder tumor cell line) whole cell lysate

Please note: All products are "FOR RESEARCH USE ONLY. NOT FOR USE IN DIAGNOSTIC PROCEDURES"

Our Abpromise to you: Quality guaranteed and expert technical support

- Replacement or refund for products not performing as stated on the datasheet
- Valid for 12 months from date of delivery
- Response to your inquiry within 24 hours
- We provide support in Chinese, English, French, German, Japanese and Spanish
- Extensive multi-media technical resources to help you
- We investigate all quality concerns to ensure our products perform to the highest standards

If the product does not perform as described on this datasheet, we will offer a refund or replacement. For full details of the Abpromise, please visit <https://www.abcam.co.jp/abpromise> or contact our technical team.

Terms and conditions

- Guarantee only valid for products bought direct from Abcam or one of our authorized distributors