




Anti-Dynamin 2 antibody ab3457

★★★★★ [5 Abreviews](#) [45 References](#) [画像数 5](#)

製品の概要

製品名	Anti-Dynamin 2 antibody
製品の詳細	Rabbit polyclonal to Dynamin 2
由来種	Rabbit
アプリケーション	適用あり: WB, ICC/IF, IHC-P
種交差性	交差種: Mouse, Rat, Human, Non human primates 交差が予測される動物種: Cow 
免疫原	Synthetic peptide corresponding to Human Dynamin 2 aa 760-779. Sequence: SPTPQRRPVSSIHPGRPPA (Peptide available as ab4985) <div>  Run BLAST with  Run BLAST with </div>
ポジティブ・コントロール	WB: SH-SY5Y, PC-12, Neuro 2a, SK-N-AS, U-87 MG, rat brain tissue; ICC/IF: SH-SY5Y, HeLa; IHC: human lung tissue.
特記事項	<p>The Life Science industry has been in the grips of a reproducibility crisis for a number of years. Abcam is leading the way in addressing this with our range of recombinant monoclonal antibodies and knockout edited cell lines for gold-standard validation. Please check that this product meets your needs before purchasing.</p> <p>If you have any questions, special requirements or concerns, please send us an inquiry and/or contact our Support team ahead of purchase. Recommended alternatives for this product can be found below, along with publications, customer reviews and Q&As</p>

製品の特性

製品の状態	Liquid
保存方法	Shipped at 4°C. Store at +4°C short term (1-2 weeks). Upon delivery aliquot. Store at -20°C or -80°C. Avoid freeze / thaw cycle.
バッファー	Preservative: 0.05% Sodium azide Constituents: 0.1% BSA, 99% PBS
精製度	Immunogen affinity purified
ポリ/モノ	ポリクローナル

アプリケーション

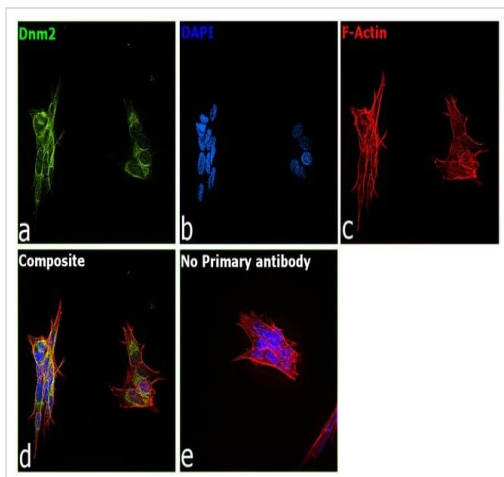
The Abpromise guarantee **Abpromise保証は、次のテスト済みアプリケーションにおけるab3457の使用に適用されます**
アプリケーションノートには、推奨の開始希釈率がありますが、適切な希釈率につきましてはご確認ください。

アプリケーション	Abreviews	特記事項
WB		Use at an assay dependent concentration.
ICC/IF	★★★★★ (4)	Use at an assay dependent concentration.
IHC-P		Use a concentration of 1 µg/ml.

ターゲット情報

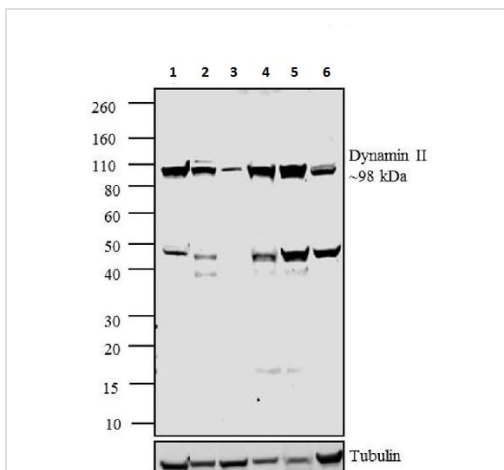
機能	Microtubule-associated force-producing protein involved in producing microtubule bundles and able to bind and hydrolyze GTP. Most probably involved in vesicular trafficking processes, in particular endocytosis.
組織特異性	Ubiquitously expressed.
関連疾患	Defects in DNM2 are a cause of centronuclear myopathy autosomal dominant (ADCNM) [MIM:160150]; also known as autosomal dominant myotubular myopathy. Centronuclear myopathies (CNMs) are congenital muscle disorders characterized by progressive muscular weakness and wasting involving mainly limb girdle, trunk, and neck muscles. It may also affect distal muscles. Weakness may be present during childhood or adolescence or may not become evident until the third decade of life. Ptosis is a frequent clinical feature. CNMs comprise a wide spectrum of phenotypes, ranging from severe neonatal to mild late-onset familial forms. The most prominent histopathologic features include high frequency of centrally located nuclei in muscle fibers not secondary to regeneration, radial arrangement of sarcoplasmic strands around the central nuclei, and predominance and hypotrophy of type 1 fibers. Defects in DNM2 are the cause of Charcot-Marie-Tooth disease dominant intermediate type B (CMTDIB) [MIM:606482]. Charcot-Marie-Tooth disease (CMT) is a clinically and genetically heterogeneous disorder of the peripheral nervous system, characterized by progressive weakness and atrophy, initially of the peroneal muscles and later of the distal muscles of the arms. CMTDIB is a form of Charcot-Marie-Tooth disease characterized by clinical and pathologic features intermediate between demyelinating and axonal peripheral neuropathies, and motor median nerve conduction velocities ranging from 25 to 45 m/sec.
配列類似性	Belongs to the dynamin family. Contains 1 GED domain. Contains 1 PH domain.
細胞内局在	Cytoplasm. Cytoplasm > cytoskeleton. Cell junction > synapse > postsynaptic cell membrane > postsynaptic density. Cell junction > synapse. Microtubule-associated. Also found in the postsynaptic density of neuronal cells.

画像



Immunocytochemistry/ Immunofluorescence - Anti-Dynamin 2 antibody (ab3457)

Immunofluorescent analysis of 4% paraformaldehyde-fixed, 0.1% Triton X-100 permeabilized SH-SY5Y cells labeling Dynamin 2 with ab3457 at 1/100 dilution followed by Goat Anti-Rabbit IgG H&L (Alexa Fluor® 488) secondary antibody at 1/2000 dilution (green). The nuclear counterstain is DAPI (blue), and F-actin is stained with Rhodamine Phalloidin at 1/300 dilution (red). Negative control was cells without primary antibody present.



Western blot - Anti-Dynamin 2 antibody (ab3457)

All lanes : Anti-Dynamin 2 antibody (ab3457)

Lane 1 : SH-SY5Y whole cell lysate

Lane 2 : PC-12

Lane 3 : Neuro-2a

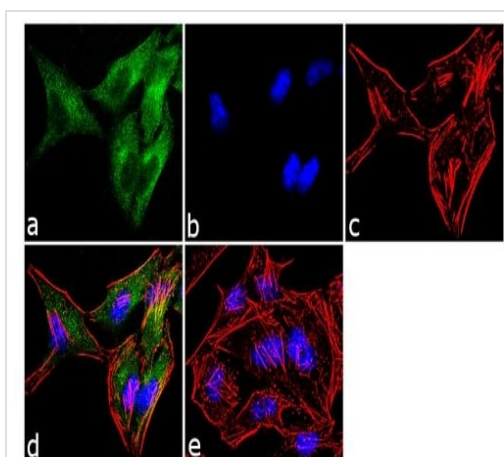
Lane 4 : SK-N-AS

Lane 5 : U- 87 MG

Lane 6 : Rat Brain

Secondary

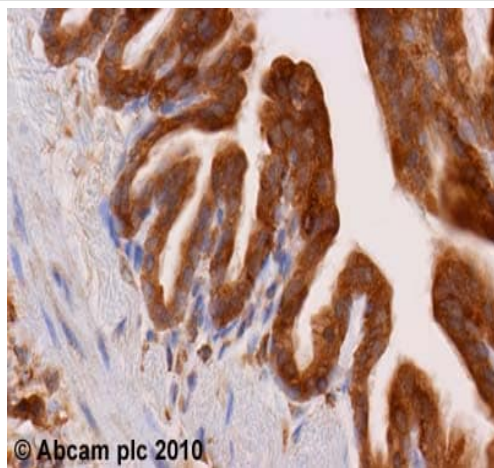
All lanes : Goat anti-Rabbit IgG (H+L) HRP conjugated



Immunocytochemistry/ Immunofluorescence - Anti-Dynamin 2 antibody (ab3457)

Immunofluorescent analysis of 4% paraformaldehyde-fixed, 0.1% Triton X-100 permeabilized HeLa cells labeling Dynamin 2 with ab3457 at 2 ug/ml followed by Goat Anti-Rabbit IgG H&L (Alexa Fluor® 488) secondary antibody at 1/2000 dilution (green).

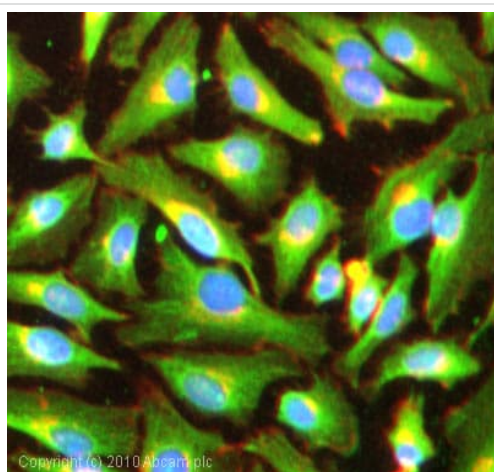
The nuclear counterstain is DAPI.



Immunohistochemistry (Formalin/PFA-fixed paraffin-embedded sections) - Anti-Dynamin 2 antibody (ab3457)

ab3457 (1 µg/ml) staining Dynamin 2 in human lung using an automated system (DAKO Autostainer Plus).

Sections were rehydrated and antigen retrieved with the Dako 3 in 1 AR buffers EDTA pH 9.0 in a DAKO PT link. Slides were peroxidase blocked in 3% H₂O₂ in methanol for 10 mins. They were then blocked with Dako Protein block for 10 minutes (containing casein 0.25% in PBS) then incubated with primary antibody for 20 min and detected with Dako envision flex amplification kit for 30 minutes. Colorimetric detection was completed with Diaminobenzidine for 5 minutes. Slides were counterstained with Haematoxylin and coverslipped under DePeX. Please note that, for manual staining, optimization of primary antibody concentration and incubation time is recommended. Signal amplification may be required.



Immunocytochemistry/ Immunofluorescence - Anti-Dynamin 2 antibody (ab3457)

ICC/IF image of ab3457 stained HeLa cells. The cells were 100% methanol fixed (5 min) and then incubated in 1%BSA / 10% normal goat serum / 0.3M glycine in 0.1% PBS-Tween for 1h to permeabilise the cells and block non-specific protein-protein interactions. The cells were then incubated with the antibody (ab3457, 1 µg/ml) overnight at +4°C. The secondary antibody (green) was Alexa Fluor® 488 goat anti-rabbit IgG (H+L) used at a 1/1000 dilution for 1h. Alexa Fluor® 594 WGA was used to label plasma membranes (red) at a 1/200 dilution for 1h. DAPI was used to stain the cell nuclei (blue) at a concentration of 1.43 µM.

Please note: All products are "FOR RESEARCH USE ONLY. NOT FOR USE IN DIAGNOSTIC PROCEDURES"

Our Abpromise to you: Quality guaranteed and expert technical support

- Replacement or refund for products not performing as stated on the datasheet
- Valid for 12 months from date of delivery
- Response to your inquiry within 24 hours
- We provide support in Chinese, English, French, German, Japanese and Spanish
- Extensive multi-media technical resources to help you
- We investigate all quality concerns to ensure our products perform to the highest standards

If the product does not perform as described on this datasheet, we will offer a refund or replacement. For full details of the Abpromise, please visit <https://www.abcam.co.jp/abpromise> or contact our technical team.

Terms and conditions

- Guarantee only valid for products bought direct from Abcam or one of our authorized distributors