


### Anti-DUSP23 antibody ab61566

★★★★★ [1 Abreviews](#) [画像数 1](#)

#### 製品の概要

製品名	Anti-DUSP23 antibody
製品の詳細	Rabbit polyclonal to DUSP23
由来種	Rabbit
アプリケーション	<b>適用あり:</b> IHC-P
種交差性	<b>交差種:</b> Human <b>交差が予測される動物種:</b> Mouse 
免疫原	Synthetic peptide corresponding to Human DUSP23 (internal sequence) conjugated to Keyhole Limpet Haemocyanin (KLH).
ポジティブ・コントロール	Human brain cerebellum.
特記事項	<p>The Life Science industry has been in the grips of a reproducibility crisis for a number of years. Abcam is leading the way in addressing this with our range of recombinant monoclonal antibodies and knockout edited cell lines for gold-standard validation. Please check that this product meets your needs before purchasing.</p> <p>If you have any questions, special requirements or concerns, please send us an inquiry and/or contact our Support team ahead of purchase. Recommended alternatives for this product can be found below, along with publications, customer reviews and Q&amp;As</p>

#### 製品の特性

製品の状態	Liquid
保存方法	Shipped at 4°C. Store at +4°C short term (1-2 weeks). Upon delivery aliquot. Store at -20°C or -80°C. Avoid freeze / thaw cycle.
バッファー	pH: 7.70 Preservative: 0.1% Sodium azide Constituent: PBS
精製度	Immunogen affinity purified
ポリ/モノ	ポリクローナル
アイソタイプ	IgG

#### アプリケーション

## The Abpromise guarantee

**Abpromise保証は、次のテスト済みアプリケーションにおけるab61566の使用に適用されます**

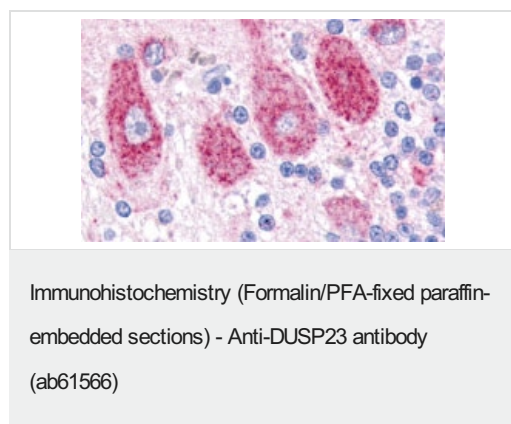
アプリケーションノートには、推奨の開始希釈率がありますが、適切な希釈率につきましてはご検討ください。

アプリケーション	Abreviews	特記事項
IHC-P	★★★★★ (1)	Use a concentration of 10 µg/ml.

## ターゲット情報

機能	Protein phosphatase that mediates dephosphorylation of proteins phosphorylated on Tyr and Ser/Thr residues. In vitro, it can dephosphorylate p44-ERK1 (MAPK3) but not p54 SAPK-beta (MAPK10) in vitro. Able to enhance activation of JNK and p38 (MAPK14).
組織特異性	Widely expressed. Highly expressed in spleen, prostate, colon, adrenal gland, mammary gland, thyroid and trachea. Expressed at lower level in uterus, small intestine, bladder, bone marrow, brain, spinal cord and stomach.
配列類似性	Belongs to the protein-tyrosine phosphatase family. Non-receptor class dual specificity subfamily. Contains 1 tyrosine-protein phosphatase domain.
細胞内局在	Cytoplasm > cytosol. Nucleus. Mainly cytosolic. Also nuclear.

## 画像



ab61566 at 10µg/ml staining DUSP23 in human brain cerebellum by Immunohistochemistry, Formalin-fixed, Paraffin-embedded tissue.

**Please note:** All products are "FOR RESEARCH USE ONLY. NOT FOR USE IN DIAGNOSTIC PROCEDURES"

## Our Abpromise to you: Quality guaranteed and expert technical support

- Replacement or refund for products not performing as stated on the datasheet
- Valid for 12 months from date of delivery
- Response to your inquiry within 24 hours
- We provide support in Chinese, English, French, German, Japanese and Spanish
- Extensive multi-media technical resources to help you
- We investigate all quality concerns to ensure our products perform to the highest standards

If the product does not perform as described on this datasheet, we will offer a refund or replacement. For full details of the Abpromise, please visit <https://www.abcam.co.jp/abpromise> or contact our technical team.

#### **Terms and conditions**

---

- Guarantee only valid for products bought direct from Abcam or one of our authorized distributors