

Dual color: FITC + PE Mouse IgG1monoclonal [HybIgG1] - isotype control ab1285

画像数 1

製品の概要

製品名	Dual color: FITC + PE Mouse IgG1monoclonal [HybIgG1] - isotype control
標識	Dual color: FITC + PE
アプリケーション	適用あり: Flow Cyt, ICC/IF
特記事項	<p>This product is a mixture of the same clone separately bearing both FITC and PE labels. This product contains sodium azide, which under acid conditions yields hydrazoic acid, a toxic compound. Azide compounds should be diluted with running water before being discarded to avoid deposits in lead or copper plumbing where explosive conditions may develop.</p> <p>This antibody control duo is a direct immunofluorescence reagent used as an isotype (negative) control for flow cytometric immunophenotyping of erythrocyte-lysed whole blood with monoclonal antibodies.</p> <p>The Life Science industry has been in the grips of a reproducibility crisis for a number of years. Abcam is leading the way in addressing this with our range of recombinant monoclonal antibodies and knockout edited cell lines for gold-standard validation. Please check that this product meets your needs before purchasing.</p> <p>If you have any questions, special requirements or concerns, please send us an inquiry and/or contact our Support team ahead of purchase. Recommended alternatives for this product can be found below, along with publications, customer reviews and Q&As</p>

製品の特性

製品の状態	Liquid
保存方法	Shipped at 4°C. Store at +4°C.
バッファー	Preservative: 0.1% Sodium azide Constituent: 0.5% BSA
アイソタイプ・コントロール 備考	This antibody control duo is a direct immunofluorescence reagent used as an isotype (negative) control for flow cytometric immunophenotyping of erythrocyte-lysed whole blood with monoclonal antibodies.
ポリ/モノ	モノクローナル
クローン名	HybIgG1

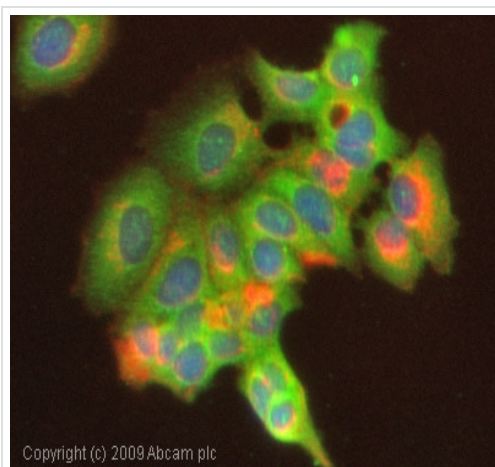
ミエローマ	unknown
アイソタイプ	IgG1
軽鎖の種類	unknown

アプリケーション

The Abpromise guarantee **Abpromise保証は、**次のテスト済みアプリケーションにおけるab1285の使用に適用されます
アプリケーションノートには、推奨の開始希釈率がありますが、適切な希釈率につきましてはご確認ください。

アプリケーション	Abreviews	特記事項
Flow Cyt		Use at an assay dependent concentration. This antibody control duo is used to determine the unstained lymphocyte population and to determine any non-antigen-specific antibody binding on mononuclear cells separated by density gradient or on lysed whole blood. IgG1 (FITC + PE) immunofluorescence analysis can be performed on a flow cytometerequipped with an excitation source of 488nm and fitted
ICC/IF		Use at an assay dependent concentration.

画像



Immunocytochemistry/ Immunofluorescence - Dual
color: FITC + PE Mouse IgG1monoclonal [HyblgG1]
- isotype control (ab1285)

ICC/IF image of **ab2185** stained MCF7 cells. The cells were 100% PFA fixed (10 min) and then incubated in 1%BSA / 10% normal goat serum / 0.3M glycine in 0.1% PBS-Tween for 1h to permeabilise the cells and block non-specific protein-protein interactions. The cells were then incubated with the antibody (**ab2185**, 1µg/ml) overnight at +4°C. The secondary antibody (green) was Alexa Fluor® 488 goat anti-rabbit IgG (H+L) used at a 1/1000 dilution for 1h. Alexa Fluor® 594 WGA was used to label plasma membranes (red) at a 1/200 dilution for 1h. DAPI was used to stain the cell nuclei (blue) at a concentration of 1.43µM.

Please note: All products are "FOR RESEARCH USE ONLY. NOT FOR USE IN DIAGNOSTIC PROCEDURES"

Our Abpromise to you: Quality guaranteed and expert technical support

- Replacement or refund for products not performing as stated on the datasheet

- Valid for 12 months from date of delivery
- Response to your inquiry within 24 hours
- We provide support in Chinese, English, French, German, Japanese and Spanish
- Extensive multi-media technical resources to help you
- We investigate all quality concerns to ensure our products perform to the highest standards

If the product does not perform as described on this datasheet, we will offer a refund or replacement. For full details of the Abpromise, please visit <https://www.abcam.co.jp/abpromise> or contact our technical team.

Terms and conditions

- Guarantee only valid for products bought direct from Abcam or one of our authorized distributors