

Anti-DSCR1L1 antibody ab106543

画像数 3

製品の概要

製品名	Anti-DSCR1L1 antibody
製品の詳細	Rabbit polyclonal to DSCR1L1
由来種	Rabbit
アプリケーション	適用あり: ICC/IF, IHC-P, WB
種交差性	交差種: Mouse
免疫原	A 14 amino acid peptide near the center of Human DSCR1L1 (AAH62141).
ポジティブ・コントロール	3T3 cell lysate; Mouse brain tissue.
特記事項	<p>The Life Science industry has been in the grips of a reproducibility crisis for a number of years. Abcam is leading the way in addressing this with our range of recombinant monoclonal antibodies and knockout edited cell lines for gold-standard validation. Please check that this product meets your needs before purchasing.</p> <p>If you have any questions, special requirements or concerns, please send us an inquiry and/or contact our Support team ahead of purchase. Recommended alternatives for this product can be found below, along with publications, customer reviews and Q&As</p>

製品の特性

製品の状態	Liquid
保存方法	Shipped at 4°C. Store at 4°C (stable for up to 12 months).
バッファー	pH: 7.2 Preservative: 0.02% Sodium azide Constituent: PBS
精製度	Immunogen affinity purified
ポリ/モノ	ポリクローナル
アイソタイプ	IgG

アプリケーション

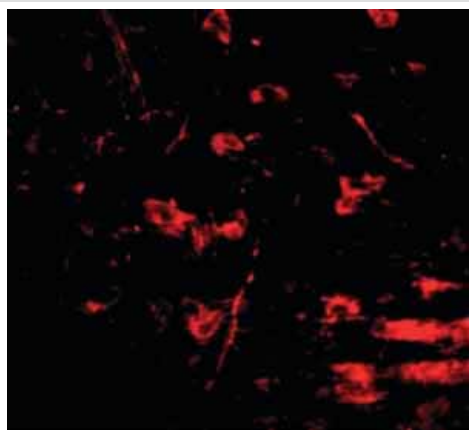
The Abpromise guarantee **Abpromise保証は、次のテスト済みアプリケーションにおけるab106543の使用に適用されず**
アプリケーションノートには、推奨の開始希釈率がありますが、適切な希釈率につきましてはご検討ください。

アプリケーション	Abreviews	特記事項
ICC/IF		Use a concentration of 20 µg/ml.
IHC-P		Use a concentration of 2.5 µg/ml.
WB		Use a concentration of 1 - 2 µg/ml. Predicted molecular weight: 22 kDa.

ターゲット情報

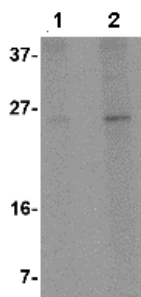
機能	Inhibits calcineurin-dependent transcriptional responses by binding to the catalytic domain of calcineurin A. Could play a role during central nervous system development.
組織特異性	Expressed in fibroblasts, heart, brain, liver, and skeletal muscle but not in placenta, lung, kidney and pancreas.
配列類似性	Belongs to the RCAN family.

画像



Immunofluorescence of DSCR1L1 in mouse brain tissue with ab106543 at 20 µg/mL.

Immunocytochemistry/ Immunofluorescence - Anti-DSCR1L1 antibody (ab106543)



Lane 1 : Anti-DSCR1L1 antibody (ab106543) at 1 µg/ml

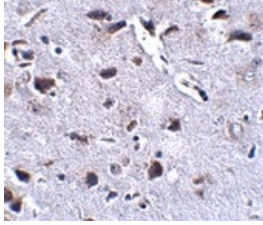
Lane 2 : Anti-DSCR1L1 antibody (ab106543) at 2 µg/ml

All lanes : 3T3 cell lysate

Lysates/proteins at 15 µg per lane.

Predicted band size: 22 kDa

Western blot - Anti-DSCR1L1 antibody (ab106543)



ab106543 at 2.5µg/ml staining DSCR1L1 in Mouse brain by Immunohistochemistry, Paraffin-embedded tissue.

Immunohistochemistry (Formalin/PFA-fixed paraffin-embedded sections) - Anti-DSCR1L1 antibody (ab106543)

Please note: All products are "FOR RESEARCH USE ONLY. NOT FOR USE IN DIAGNOSTIC PROCEDURES"

Our Abpromise to you: Quality guaranteed and expert technical support

- Replacement or refund for products not performing as stated on the datasheet
- Valid for 12 months from date of delivery
- Response to your inquiry within 24 hours
- We provide support in Chinese, English, French, German, Japanese and Spanish
- Extensive multi-media technical resources to help you
- We investigate all quality concerns to ensure our products perform to the highest standards

If the product does not perform as described on this datasheet, we will offer a refund or replacement. For full details of the Abpromise, please visit <https://www.abcam.co.jp/abpromise> or contact our technical team.

Terms and conditions

- Guarantee only valid for products bought direct from Abcam or one of our authorized distributors