

Anti-DRG2 antibody ab121268

画像数 2

製品の概要

製品名	Anti-DRG2 antibody
製品の詳細	Rabbit polyclonal to DRG2
由来種	Rabbit
アプリケーション	適用あり: IHC-P, ICC/IF
種交差性	交差種: Human
免疫原	antigen, corresponding to amino acids 210-359 of Human DRG2 (P55039).
ポジティブ・コントロール	Human kidney tissue, Human cell line U-2 OS
特記事項	<p>The Life Science industry has been in the grips of a reproducibility crisis for a number of years. Abcam is leading the way in addressing this with our range of recombinant monoclonal antibodies and knockout edited cell lines for gold-standard validation. Please check that this product meets your needs before purchasing.</p> <p>If you have any questions, special requirements or concerns, please send us an inquiry and/or contact our Support team ahead of purchase. Recommended alternatives for this product can be found below, along with publications, customer reviews and Q&As</p>

製品の特性

製品の状態	Liquid
保存方法	Shipped at 4°C. Upon delivery aliquot and store at -20°C. Avoid freeze / thaw cycles.
バッファー	pH: 7.20 Preservative: 0.02% Sodium azide Constituents: 59% PBS, 40% Glycerol (glycerin, glycerine)
精製度	Immunogen affinity purified
ポリ/モノ	ポリクローナル
アイソタイプ	IgG

アプリケーション

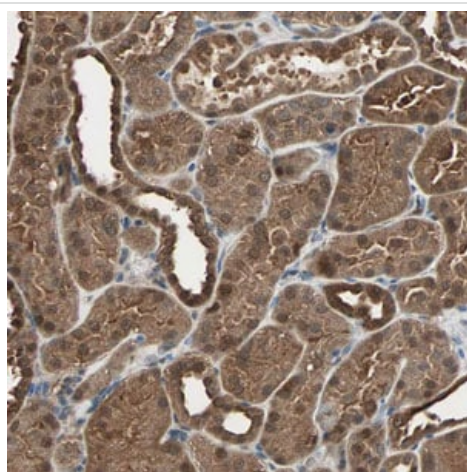
The Abpromise guarantee **Abpromise保証は、次のテスト済みアプリケーションにおけるab121268の使用に適用されず**
アプリケーションノートには、推奨の開始希釈率がありますが、適切な希釈率につきましてはご検討ください。

アプリケーション	Abreviews	特記事項
IHC-P		1/20 - 1/50. Perform heat mediated antigen retrieval with citrate buffer pH 6 before commencing with IHC staining protocol. pH 6, using a pressure boiler
ICC/IF		Use a concentration of 0.25 - 2 µg/ml.

ターゲット情報

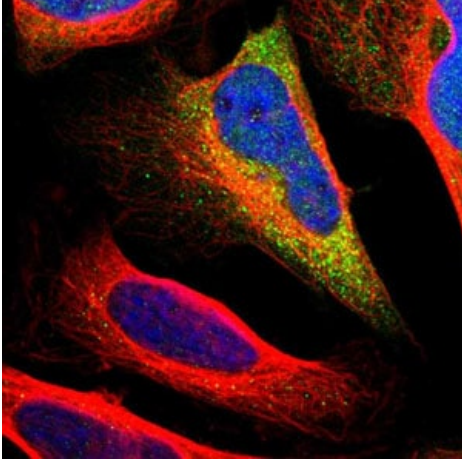
機能	May play a role in cell proliferation, differentiation and death.
組織特異性	Highest levels in skeletal muscle, heart and kidney. Low levels in colon, thymus, spleen, small intestine, lung and Leukocytes.
配列類似性	Belongs to the GTP1/OBG family. Contains 1 G (guanine nucleotide-binding) domain.
翻訳後修飾	Polyubiquitinated; which induces proteolytic degradation and is impaired by interaction with RWDD1.
細胞内局在	Cytoplasm.

画像



ab121268 at 1/35 dilution staining DRG2 in Human kidney by Immunohistochemistry Formalin-fixed, Paraffin-embedded tissue.

Immunohistochemistry (Formalin/PFA-fixed paraffin-embedded sections) - Anti-DRG2 antibody (ab121268)



ab121268 at 4 µg/ml staining DRG2 in Human cell line U-2 OS by Immunofluorescent staining. Antibody staining is shown in green.

Immunocytochemistry/ Immunofluorescence - Anti-DRG2 antibody (ab121268)

Please note: All products are "FOR RESEARCH USE ONLY. NOT FOR USE IN DIAGNOSTIC PROCEDURES"

Our Abpromise to you: Quality guaranteed and expert technical support

- Replacement or refund for products not performing as stated on the datasheet
- Valid for 12 months from date of delivery
- Response to your inquiry within 24 hours

- We provide support in Chinese, English, French, German, Japanese and Spanish
- Extensive multi-media technical resources to help you
- We investigate all quality concerns to ensure our products perform to the highest standards

If the product does not perform as described on this datasheet, we will offer a refund or replacement. For full details of the Abpromise, please visit <https://www.abcam.co.jp/abpromise> or contact our technical team.

Terms and conditions

- Guarantee only valid for products bought direct from Abcam or one of our authorized distributors