


Anti-DREAM antibody ab3474

2 References [画像数 1](#)

製品の概要

製品名	Anti-DREAM antibody
製品の詳細	Rabbit polyclonal to DREAM
由来種	Rabbit
特異性	Detects KChIP 3 from rabbit cerebellar granule cells.
アプリケーション	適用あり: ICC/IF
種交差性	交差種: Rabbit 交差が予測される動物種: Mouse 
免疫原	Synthetic peptide corresponding to Mouse DREAM aa 30-45. Sequence: IKWQRPRFTRQALMRC (Peptide available as ab5866)
ポジティブ・コントロール	ICC/IF: Rabbit granule cells
特記事項	<p>The Life Science industry has been in the grips of a reproducibility crisis for a number of years. Abcam is leading the way in addressing this with our range of recombinant monoclonal antibodies and knockout edited cell lines for gold-standard validation. Please check that this product meets your needs before purchasing.</p> <p>If you have any questions, special requirements or concerns, please send us an inquiry and/or contact our Support team ahead of purchase. Recommended alternatives for this product can be found below, along with publications, customer reviews and Q&As</p>

 [Run BLAST with](#)

 [Run BLAST with](#)

製品の特性

製品の状態	Liquid
保存方法	Shipped at 4°C. Store at +4°C short term (1-2 weeks). Upon delivery aliquot. Store at -20°C or -80°C. Avoid freeze / thaw cycle.
バッファー	Preservative: 0.05% Sodium azide Constituents: 0.1% BSA, 99% PBS
精製度	Immunogen affinity purified

ポリ/モノ	ポリクローナル
アイソタイプ	IgG

アプリケーション

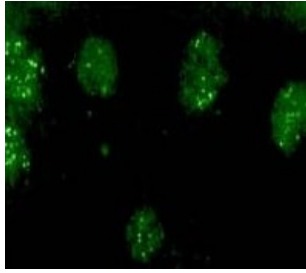
The Abpromise guarantee **Abpromise保証は、** 次のテスト済みアプリケーションにおけるab3474の使用に適用されます
アプリケーションノートには、推奨の開始希釈率がありますが、適切な希釈率につきましてはご確認ください。

アプリケーション	Abreviews	特記事項
ICC/IF		Use at an assay dependent concentration.

ターゲット情報

機能	Calcium-dependent transcriptional repressor that binds to the DRE element of genes including PDYN and FOS. Affinity for DNA is reduced upon binding to calcium and enhanced by binding to magnesium. Seems to be involved in nociception. Regulatory subunit of Kv4/D (Shal)-type voltage-gated rapidly inactivating A-type potassium channels, such as KCND2/Kv4.2 and KCND3/Kv4.3. Modulates channel expression at the cell membrane, gating characteristics, inactivation kinetics and rate of recovery from inactivation in a calcium-dependent and isoform-specific manner. May play a role in the regulation of PSEN2 proteolytic processing and apoptosis. Together with PSEN2 involved in modulation of beta-amyloid formation.
組織特異性	Highly expressed in brain. Widely expressed at lower levels. Expression levels are elevated in brain cortex regions affected by Alzheimer disease.
配列類似性	Belongs to the recoverin family. Contains 4 EF-hand domains.
翻訳後修飾	Palmitoylated. Palmitoylation enhances association with the plasma membrane. Proteolytically cleaved by caspase-3. Phosphorylation at Ser-63 inhibits cleavage by CASP3.
細胞内局在	Cytoplasm. Cell membrane. Endoplasmic reticulum. Golgi apparatus. Nucleus. Also membrane-bound, associated with the plasma membrane (PubMed:15485870). In the presence of PSEN2 associated with the endoplasmic reticulum and Golgi. The sumoylated form is present only in the nucleus.

画像



Immunolocalization of DREAM in Rabbit granule cells using ab3474.

Immunocytochemistry/ Immunofluorescence - Anti-DREAM antibody (ab3474)

Please note: All products are "FOR RESEARCH USE ONLY. NOT FOR USE IN DIAGNOSTIC PROCEDURES"

Our Abpromise to you: Quality guaranteed and expert technical support

- Replacement or refund for products not performing as stated on the datasheet
- Valid for 12 months from date of delivery
- Response to your inquiry within 24 hours
- We provide support in Chinese, English, French, German, Japanese and Spanish
- Extensive multi-media technical resources to help you
- We investigate all quality concerns to ensure our products perform to the highest standards

If the product does not perform as described on this datasheet, we will offer a refund or replacement. For full details of the Abpromise, please visit <https://www.abcam.co.jp/abpromise> or contact our technical team.

Terms and conditions

- Guarantee only valid for products bought direct from Abcam or one of our authorized distributors