


Anti-DRD5 antibody ab32620

[3 References](#) [画像数 2](#)

製品の概要

製品名	Anti-DRD5 antibody
製品の詳細	Rabbit polyclonal to DRD5
由来種	Rabbit
アプリケーション	適用あり: IHC-P, ICC/IF
種交差性	交差種: Human 交差が予測される動物種: Chicken 
免疫原	Synthetic peptide within Human DRD5 aa 450 to the C-terminus. The exact sequence is proprietary. Database link: P21918
ポジティブ・コントロール	Human brain tissue.
特記事項	This product is FOR RESEARCH USE ONLY. For commercial use, please contact partnerships@abcam.com. The Life Science industry has been in the grips of a reproducibility crisis for a number of years. Abcam is leading the way in addressing this with our range of recombinant monoclonal antibodies and knockout edited cell lines for gold-standard validation. Please check that this product meets your needs before purchasing. If you have any questions, special requirements or concerns, please send us an inquiry and/or contact our Support team ahead of purchase. Recommended alternatives for this product can be found below, along with publications, customer reviews and Q&As

製品の特性

製品の状態	Liquid
保存方法	Shipped at 4°C. Upon delivery aliquot and store at -20°C. Avoid freeze / thaw cycles.
バッファー	pH: 7.60 Preservative: 0.1% Sodium azide Constituents: PBS, 1% BSA
精製度	Immunogen affinity purified
ポリ/モノ	ポリクローナル
アイソタイプ	IgG

アプリケーション

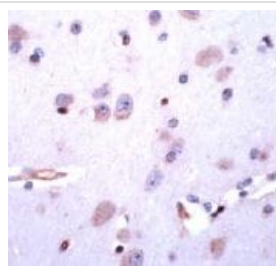
The Abpromise guarantee **Abpromise保証は、次のテスト済みアプリケーションにおけるab32620の使用に適用されます**
アプリケーションノートには、推奨の開始希釈率がありますが、適切な希釈率につきましてはご検討ください。

アプリケーション	Abreviews	特記事項
IHC-P		1/50. Perform heat mediated antigen retrieval before commencing with IHC staining protocol.
ICC/IF		Use a concentration of 5 µg/ml.

ターゲット情報

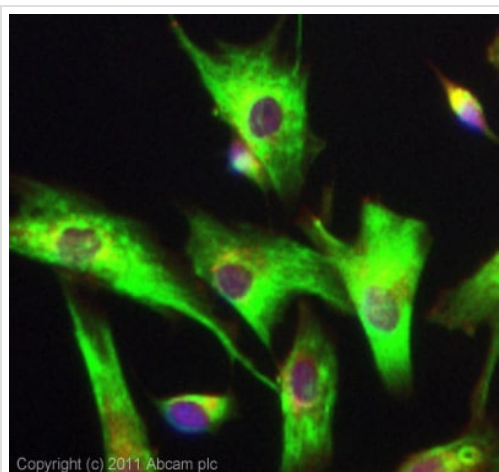
機能	Dopamine receptor whose activity is mediated by G proteins which activate adenylyl cyclase.
組織特異性	Neuron-specific, localized primarily within limbic regions of the brain.
関連疾患	Defects in DRD5 are a cause of benign essential blepharospasm (BEB) [MIM:606798]. BEB is a primary focal dystonia affecting the orbicularis oculi muscles. Dystonia is defined by the presence of sustained involuntary muscle contraction, often leading to abnormal postures. BEB usually begins in middle age. Initial symptoms include eye irritation and frequent blinking, progressing to involuntary spasms of eyelid closure. Patients have normal eyes. The visual disturbance is due solely to the forced closure of the eyelids. In severe cases, this can lead to functional blindness.
配列類似性	Belongs to the G-protein coupled receptor 1 family.
細胞内局在	Cell membrane.

画像



Ab32620, at a 1/50 dilution, staining DRD5 in formalin fixed paraffin embedded human brain tissue by Immunohistochemistry.

Immunohistochemistry (Formalin/PFA-fixed paraffin-embedded sections) - Anti-DRD5 antibody (ab32620)



Immunocytochemistry/ Immunofluorescence - Anti-DRD5 antibody (ab32620)

ICC/IF image of ab32620 stained SKNSH cells. The cells were 4% formaldehyde (10 min) and then incubated in 1%BSA / 10% normal goat serum / 0.3M glycine in 0.1% PBS-Tween for 1h to permeabilise the cells and block non-specific protein-protein interactions. The cells were then incubated with the antibody (ab32620, 5µg/ml) overnight at +4°C. The secondary antibody (green) was **ab96899** Dylight 488 goat anti-rabbit IgG (H+L) used at a 1/250 dilution for 1h. Alexa Fluor® 594 WGA was used to label plasma membranes (red) at a 1/200 dilution for 1h. DAPI was used to stain the cell nuclei (blue) at a concentration of 1.43µM.

Please note: All products are "FOR RESEARCH USE ONLY. NOT FOR USE IN DIAGNOSTIC PROCEDURES"

Our Abpromise to you: Quality guaranteed and expert technical support

- Replacement or refund for products not performing as stated on the datasheet
- Valid for 12 months from date of delivery
- Response to your inquiry within 24 hours

- We provide support in Chinese, English, French, German, Japanese and Spanish
- Extensive multi-media technical resources to help you
- We investigate all quality concerns to ensure our products perform to the highest standards

If the product does not perform as described on this datasheet, we will offer a refund or replacement. For full details of the Abpromise, please visit <https://www.abcam.co.jp/abpromise> or contact our technical team.

Terms and conditions

- Guarantee only valid for products bought direct from Abcam or one of our authorized distributors