





Anti-DPP8 antibody ab96470

面格新?

医薬用外劇物

製品の概要

製品名	Anti-DPP8 antibody
製品の詳細	Rabbit polyclonal to DPP8
由来種	Rabbit
アプリケーション	適用あり: WB, ICC/IF
種交差性	交差種: Human
免疫原	Synthetic peptide corresponding to a region within amino acids 1-39 (MAAAMETEQL GVEIFETADC EENIESQDRP KLEPFYVER) of DPP8 (NP_060213; UniProt ID: Q6V1X1 isoform 4).  Run BLAST with   Run BLAST with 
ポジティブ・コントロール	WB: A431 whole cell lysate; 293T, H1299 and HepG2 cell lines ICC/IF: HeLa cells
特記事項	<p>The Life Science industry has been in the grips of a reproducibility crisis for a number of years. Abcam is leading the way in addressing this with our range of recombinant monoclonal antibodies and knockout edited cell lines for gold-standard validation. Please check that this product meets your needs before purchasing.</p> <p>If you have any questions, special requirements or concerns, please send us an inquiry and/or contact our Support team ahead of purchase. Recommended alternatives for this product can be found below, along with publications, customer reviews and Q&As</p>

製品の特性

製品の状態	Liquid
保存方法	Shipped at 4°C. Upon delivery aliquot and store at -20°C or -80°C. Avoid repeated freeze / thaw cycles.
バッファー	pH: 7.00 Preservative: 0.01% Thimerosal (merthiolate) Constituents: 1.21% Tris, 0.75% Glycine, 10% Glycerol (glycerin, glycerine)
精製度	Immunogen affinity purified
ポリ/モノ	ポリクローナル
アイソタイプ	IgG

アプリケーション

The Abpromise guarantee

Abpromise保証は、次のテスト済みアプリケーションにおけるab96470の使用に適用されます

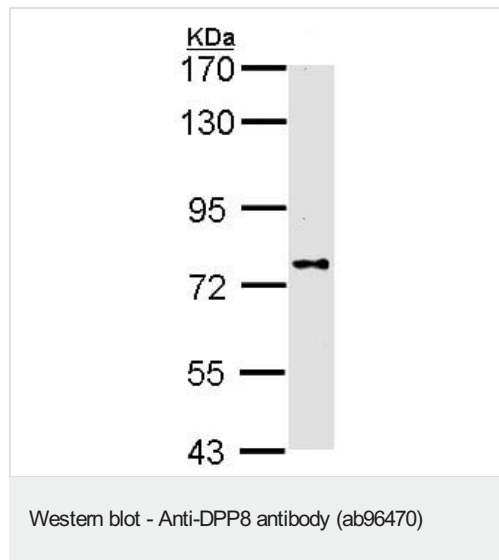
アプリケーションノートには、推奨の開始希釈率がありますが、適切な希釈率につきましてはご確認ください。

アプリケーション	Abreviews	特記事項
WB		1/500 - 1/3000. Predicted molecular weight: 103 kDa.
ICC/IF		1/100 - 1/200.

ターゲット情報

機能	Dipeptidyl peptidase that cleaves off N-terminal dipeptides from proteins having a Pro or Ala residue at position 2. May play a role in T-cell activation and immune function.
組織特異性	Ubiquitously expressed, with highest levels in testis, placenta, prostate, muscle and brain.
配列類似性	Belongs to the peptidase S9B family. DPPIV subfamily.
細胞内局在	Cytoplasm.

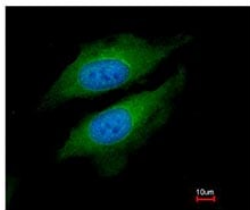
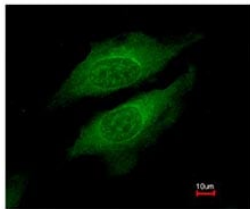
画像



Anti-DPP8 antibody (ab96470) at 1/1000 dilution + A431 whole cell lysate at 30 µg

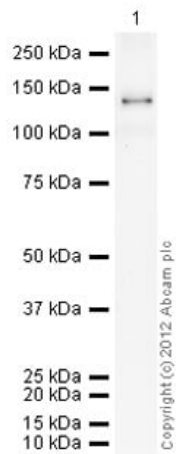
Predicted band size: 103 kDa

7.5% SDS-PAGE



ab96470, at a 1/200 dilution, staining DPP8 in paraformaldehyde fixed HeLa cells by Immunofluorescence.
Lower image is merged with DNA probe.

Immunocytochemistry/ Immunofluorescence - Anti-DPP8 antibody (ab96470)



Western blot - Anti-DPP8 antibody (ab96470)

Please note: All products are "FOR RESEARCH USE ONLY. NOT FOR USE IN DIAGNOSTIC PROCEDURES"

Our Abpromise to you: Quality guaranteed and expert technical support

- Replacement or refund for products not performing as stated on the datasheet

- Valid for 12 months from date of delivery
- Response to your inquiry within 24 hours
- We provide support in Chinese, English, French, German, Japanese and Spanish
- Extensive multi-media technical resources to help you
- We investigate all quality concerns to ensure our products perform to the highest standards

If the product does not perform as described on this datasheet, we will offer a refund or replacement. For full details of the Abpromise, please visit <https://www.abcam.co.jp/abpromise> or contact our technical team.

Terms and conditions

- Guarantee only valid for products bought direct from Abcam or one of our authorized distributors