

Anti-DPP8 antibody ab113226

2 References 画像数 1

医薬用外劇物

製品の概要

製品名	Anti-DPP8 antibody
製品の詳細	Rabbit polyclonal to DPP8
由来種	Rabbit
アプリケーション	適用あり: WB, IHC-P, ICC/IF
種交差性	交差種: Human
免疫原	Synthetic peptide corresponding to Human DPP8 aa 1-39 conjugated to Keyhole Limpet Haemocyanin (KLH).
ポジティブ・コントロール	Human placenta and prostate tissues; A431 cell lysate; HeLa cells.
特記事項	<p>The Life Science industry has been in the grips of a reproducibility crisis for a number of years. Abcam is leading the way in addressing this with our range of recombinant monoclonal antibodies and knockout edited cell lines for gold-standard validation. Please check that this product meets your needs before purchasing.</p> <p>If you have any questions, special requirements or concerns, please send us an inquiry and/or contact our Support team ahead of purchase. Recommended alternatives for this product can be found below, along with publications, customer reviews and Q&amp;As</p>

製品の特性

製品の状態	Liquid
保存方法	Shipped at 4°C. Upon delivery aliquot and store at -20°C. Avoid repeated freeze / thaw cycles.
バッファー	pH: 7.00 Preservative: 0.01% Thimerosal (merthiolate) Constituents: 10% Glycerol (glycerin, glycerine), Tris glycine
精製度	Protein A purified
ポリ/モノ	ポリクローナル

アプリケーション

The Abpromise guarantee      Abpromise保証は、 次のテスト済みアプリケーションにおけるab113226の使用に適用されます

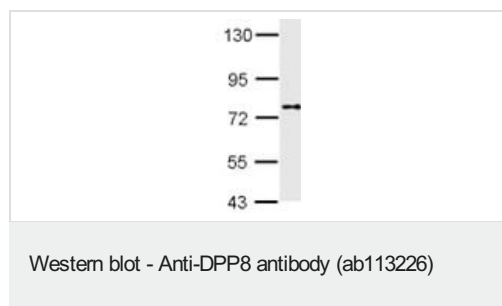
アプリケーションノートには、推奨の開始希釈率がありますが、適切な希釈率につきましてはご確認ください。

アプリケーション	Abreviews	特記事項
WB		1/500 - 1/3000. Predicted molecular weight: 103 kDa.
IHC-P		Use a concentration of 10 µg/ml.
ICC/IF		1/100 - 1/200.

## ターゲット情報

機能	Dipeptidyl peptidase that cleaves off N-terminal dipeptides from proteins having a Pro or Ala residue at position 2. May play a role in T-cell activation and immune function.
組織特異性	Ubiquitously expressed, with highest levels in testis, placenta, prostate, muscle and brain.
配列類似性	Belongs to the peptidase S9B family. DPPV subfamily.
細胞内局在	Cytoplasm.

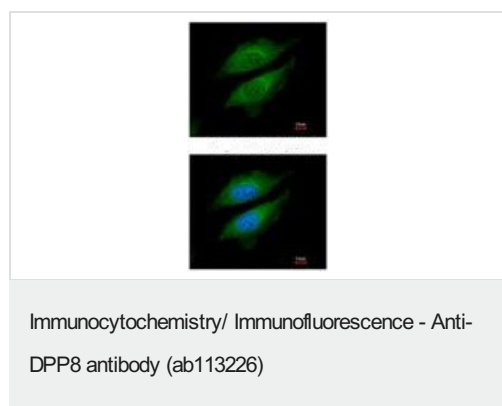
## 画像



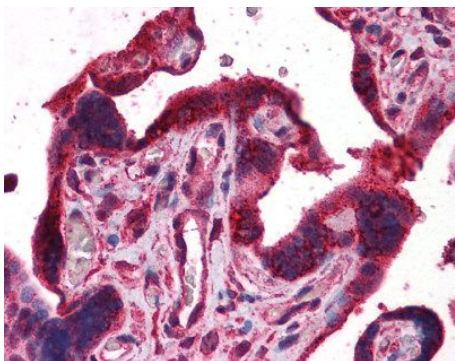
Anti-DPP8 antibody (ab113226) at 1/1000 dilution + A431 whole cell lysate at 30 µg

**Predicted band size:** 103 kDa

7.5% SDS PAGE.

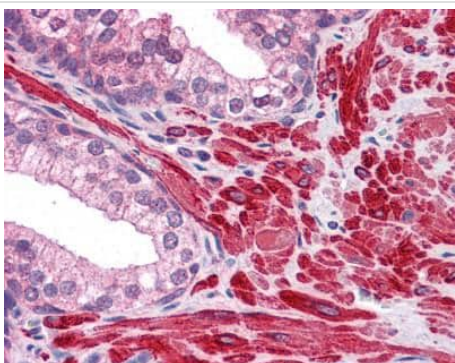


ab113226 at 1/200 dilution staining DPP8 in paraformaldehyde-fixed HeLa cells by Immunofluorescence. The lower image is merged with DNA probe.



Immunohistochemistry (Formalin/PFA-fixed paraffin-embedded sections) - Anti-DPP8 antibody (ab113226)

ab113226, at 10µg/ml, staining DPP8 in Formalin-fixed, Paraffin-embedded Human Placenta tissue by Immunohistochemistry.



Immunohistochemistry (Formalin/PFA-fixed paraffin-embedded sections) - Anti-DPP8 antibody (ab113226)

ab113226, at 10µg/ml, staining DPP8 in Formalin-fixed, Paraffin-embedded Human Prostate tissue by Immunohistochemistry.

**Please note:** All products are "FOR RESEARCH USE ONLY. NOT FOR USE IN DIAGNOSTIC PROCEDURES"

#### Our Abpromise to you: Quality guaranteed and expert technical support

- Replacement or refund for products not performing as stated on the datasheet
- Valid for 12 months from date of delivery
- Response to your inquiry within 24 hours
- We provide support in Chinese, English, French, German, Japanese and Spanish
- Extensive multi-media technical resources to help you
- We investigate all quality concerns to ensure our products perform to the highest standards

If the product does not perform as described on this datasheet, we will offer a refund or replacement. For full details of the Abpromise,

please visit <https://www.abcam.co.jp/abpromise> or contact our technical team.

#### **Terms and conditions**

---

- Guarantee only valid for products bought direct from Abcam or one of our authorized distributors