

Anti-DPP6 antibody - Catalytic domain ab41811

★★★★☆ [2 Abreviews](#) [6 References](#) [画像数 1](#)

製品の概要

製品名	Anti-DPP6 antibody - Catalytic domain
製品の詳細	Rabbit polyclonal to DPP6 - Catalytic domain
由来種	Rabbit
特異性	This antibody will recognize the three longest forms of DPP6 but not the 353 amino acid form. It will not recognize the other family members.
アプリケーション	適用あり: WB
種交差性	交差種: Mouse, Human
免疫原	Synthetic peptide based on the catalytic domain of human DPP6. Immunogen の所有権に関して (Peptide available as ab44770 .)
特記事項	<p>The Life Science industry has been in the grips of a reproducibility crisis for a number of years. Abcam is leading the way in addressing this with our range of recombinant monoclonal antibodies and knockout edited cell lines for gold-standard validation. Please check that this product meets your needs before purchasing.</p> <p>If you have any questions, special requirements or concerns, please send us an inquiry and/or contact our Support team ahead of purchase. Recommended alternatives for this product can be found below, along with publications, customer reviews and Q&As</p>

製品の特性

製品の状態	Liquid
保存方法	Shipped at 4°C. Upon delivery aliquot and store at -20°C. Avoid freeze / thaw cycles.
バッファー	Preservative: 0.05% Sodium azide Constituent: 50% Glycerol
精製度	Immunogen affinity purified
ポリ/モノ	ポリクローナル
アイソタイプ	IgG

アプリケーション

The Abpromise guarantee

Abpromise保証は、 次のテスト済みアプリケーションにおけるab41811の使用に適用されます

アプリケーションノートには、推奨の開始希釈率がありますが、適切な希釈率につきましてはご確認ください。

アプリケーション	Abreviews	特記事項
WB	★★★★★ (1)	

追加情報

WB: 1/1000 when using colorimetric substrates such as BCIP/NBT, and 1/5000 for chemiluminescent substrates. Predicted molecular weight: 98 kDa. EDTA/EGTA treatment of tissues or lysates is required to see latent zymogen. Dilution optimised using Chromogenic detection. Not yet tested in other applications. Optimal dilutions/concentrations should be determined by the end user.

ターゲット情報

機能

Promotes cell surface expression of the potassium channel KCND2 (PubMed:15454437, PubMed:19441798). Modulates the activity and gating characteristics of the potassium channel KCND2 (PubMed:18364354). Has no dipeptidyl aminopeptidase activity (PubMed:8103397, PubMed:15476821).

組織特異性

Expressed predominantly in brain.

関連疾患

Familial paroxysmal ventricular fibrillation 2
Mental retardation, autosomal dominant 33

配列類似性

Belongs to the peptidase S9B family.

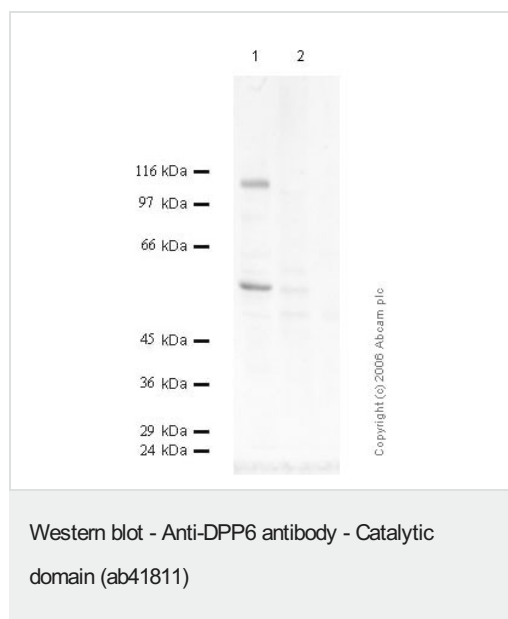
翻訳後修飾

N-glycosylated.

細胞内局在

Cell membrane.

画像



All lanes : Anti-DPP6 antibody - Catalytic domain (ab41811) at 1/1000 dilution

Lane 1 : Mouse Brain

Lane 2 : DU145 / IL1-beta Cell media

Predicted band size: 98 kDa

Observed band size: 105 kDa

Additional bands at: 60 kDa (possible truncated form)

Please note: All products are "FOR RESEARCH USE ONLY. NOT FOR USE IN DIAGNOSTIC PROCEDURES"

Our Abpromise to you: Quality guaranteed and expert technical support

- Replacement or refund for products not performing as stated on the datasheet
- Valid for 12 months from date of delivery
- Response to your inquiry within 24 hours

- We provide support in Chinese, English, French, German, Japanese and Spanish
- Extensive multi-media technical resources to help you
- We investigate all quality concerns to ensure our products perform to the highest standards

If the product does not perform as described on this datasheet, we will offer a refund or replacement. For full details of the Abpromise, please visit <https://www.abcam.co.jp/abpromise> or contact our technical team.

Terms and conditions

- Guarantee only valid for products bought direct from Abcam or one of our authorized distributors