

### Anti-Doublecortin antibody [EPR19997] ab207175

リコンビナント **RabMAb**

★★★★☆ **3 Abreviews** **19 References** 画像数 9

#### 製品の概要

製品名	Anti-Doublecortin antibody [EPR19997]
製品の詳細	Rabbit monoclonal [EPR19997] to Doublecortin
由来種	Rabbit
アプリケーション	<b>適用あり:</b> IHC-P, WB, IHC-Fr, ICC/IF
種交差性	<b>交差種:</b> Mouse, Rat, Human
免疫原	Recombinant fragment. This information is proprietary to Abcam and/or its suppliers.
ポジティブ・コントロール	WB: Human fetal brain and brain lysates; Mouse and rat brain lysates; SH-SY5Y whole cell lysate. IHC-P: Mouse and rat adult hippocampus tissues. IHC-Fr: Rat adult hippocampus tissue. ICC/IF: SH-SY5Y cells.
特記事項	<p>This product is a recombinant monoclonal antibody, which offers several advantages including:</p> <ul style="list-style-type: none"> <li>- High batch-to-batch consistency and reproducibility</li> <li>- Improved sensitivity and specificity</li> <li>- Long-term security of supply</li> <li>- Animal-free production</li> </ul> <p>For more information <a href="#">see here</a>.</p> <p>Our RabMAb<sup>®</sup> technology is a patented hybridoma-based technology for making rabbit monoclonal antibodies. For details on our patents, please refer to <a href="#">RabMAb<sup>®</sup> patents</a>.</p>

#### 製品の特性

製品の状態	Liquid
保存方法	Shipped at 4°C. Store at +4°C short term (1-2 weeks). Upon delivery aliquot. Store at -20°C long term. Avoid freeze / thaw cycle.
バッファー	<p>pH: 7.2</p> <p>Preservative: 0.01% Sodium azide</p> <p>Constituents: 59% PBS, 40% Glycerol, 0.05% BSA</p>
精製度	Protein A purified
ポリ/モノ	モノクローナル
クローン名	EPR19997

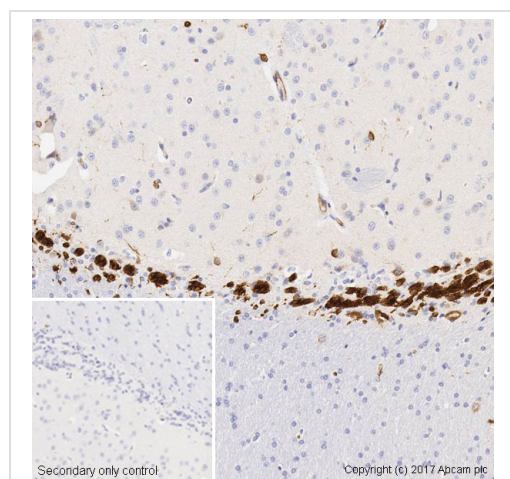
## アプリケーション

The Abpromise guarantee **Abpromise保証は、次のテスト済みアプリケーションにおけるab207175の使用に適用されます**  
 アプリケーションノートには、推奨の開始希釈率がありますが、適切な希釈率につきましてはご確認ください。

アプリケーション	Abreviews	特記事項
IHC-P		1/250. Perform heat mediated antigen retrieval with Tris/EDTA buffer pH 9.0 before commencing with IHC staining protocol.
WB		1/1000. Detects a band of approximately 40 kDa (predicted molecular weight: 40 kDa).
IHC-Fr		1/100. Antigen retrieval: Heated citrate solution (10mM citrate PH 6.0 + 0.05% Tween-20). IHC-Fr is only recommended for rat species.
ICC/IF		1/250.

## ターゲット情報

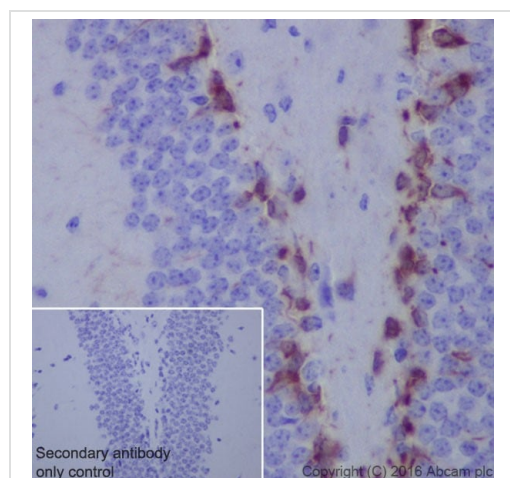
機能	Seems to be required for initial steps of neuronal dispersion and cortex lamination during cerebral cortex development. May act by competing with the putative neuronal protein kinase DCAMKL1 in binding to a target protein. May in that way participate in a signaling pathway that is crucial for neuronal interaction before and during migration, possibly as part of a calcium ion-dependent signal transduction pathway. May be part with LIS-1 of an overlapping, but distinct, signaling pathways that promote neuronal migration.
組織特異性	Highly expressed in neuronal cells of fetal brain (in the majority of cells of the cortical plate, intermediate zone and ventricular zone), but not expressed in other fetal tissues. In the adult, highly expressed in the brain frontal lobe, but very low expression in other regions of brain, and not detected in heart, placenta, lung, liver, skeletal muscles, kidney and pancreas.
関連疾患	Defects in DCX are the cause of lissencephaly X-linked type 1 (LISX1) [MIM:300067]; also called X-LIS or LIS. LISX1 is a classic lissencephaly characterized by mental retardation and seizures that are more severe in male patients. Affected boys show an abnormally thick cortex with absent or severely reduced gyri. Clinical manifestations include feeding problems, abnormal muscular tone, seizures and severe to profound psychomotor retardation. Female patients display a less severe phenotype referred to as 'doublecortex'. Defects in DCX are the cause of subcortical band heterotopia X-linked (SBHX) [MIM:300067]; also known as double cortex or subcortical laminar heterotopia (SCLH). SBHX is a mild brain malformation of the lissencephaly spectrum. It is characterized by bilateral and symmetric plates or bands of gray matter found in the central white matter between the cortex and cerebral ventricles, cerebral convolutions usually appearing normal. Note=A chromosomal aberration involving DCX is found in lissencephaly. Translocation t(X;2) (q22.3;p25.1).
配列類似性	Contains 2 doublecortin domains.
細胞内局在	Cytoplasm.



Immunohistochemistry (Formalin/PFA-fixed paraffin-embedded sections) - Anti-Doublecortin antibody [EPR19997] (ab207175)

IHC image of Doublecortin staining in a formalin fixed, paraffin embedded normal rat hippocampus (SVZ region) tissue section, performed on a Leica Bond™ system using the standard protocol F. The section was pre-treated using heat mediated antigen retrieval with sodium citrate buffer (pH6, epitope retrieval solution 1) for 20 mins. The section was then incubated with ab207175 at 1/500 dilution for 15 mins at room temperature and detected using an HRP conjugated compact polymer system. DAB was used as the chromogen. The section was then counterstained with haematoxylin and mounted with DPX. As a negative control (inset), an identical assay was performed without adding the primary antibody.

For other IHC staining systems (automated and non-automated) customers should optimize variable parameters such as antigen retrieval conditions, primary antibody concentration and antibody incubation times.

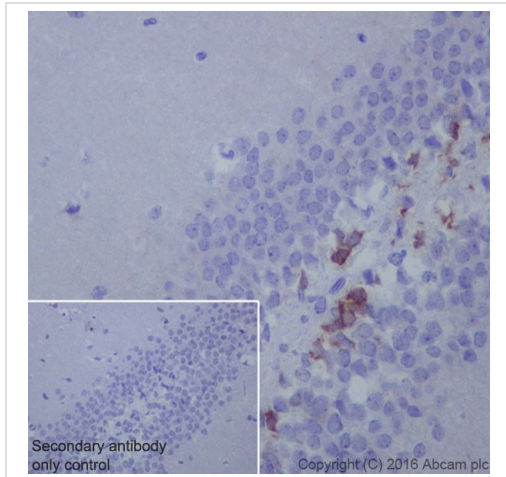


Immunohistochemistry (Formalin/PFA-fixed paraffin-embedded sections) - Anti-Doublecortin antibody [EPR19997] (ab207175)

Immunohistochemical analysis of paraffin-embedded mouse adult hippocampus tissue labeling Doublecortin with ab207175 at 1/250 dilution, followed by Goat Anti-Rabbit IgG H&L (HRP) ([ab97051](#)) at 1/500 dilution. Cytoplasmic staining on mouse hippocampal dentate gyrus is observed [PMID:23690918] [PMID:16814555]. Counter stained with Hematoxylin.

Secondary antibody only control: Used PBS instead of primary antibody, secondary antibody is Goat Anti-Rabbit IgG H&L (HRP) ([ab97051](#)) at 1/500 dilution.

Perform heat mediated antigen retrieval with Tris/EDTA buffer pH 9.0 before commencing with IHC staining protocol.

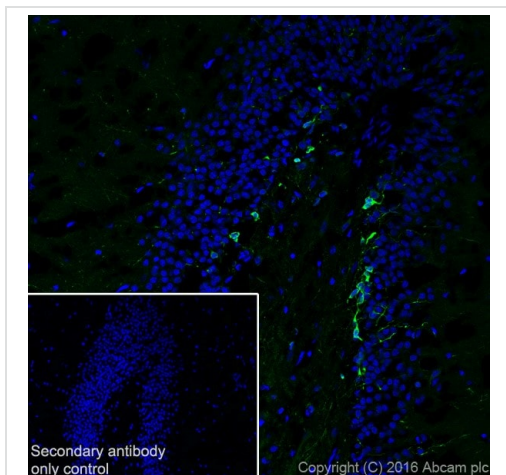


Immunohistochemistry (Formalin/PFA-fixed paraffin-embedded sections) - Anti-Doublecortin antibody [EPR19997] (ab207175)

Immunohistochemical analysis of paraffin-embedded rat adult hippocampus tissue labeling Doublecortin with ab207175 at 1/250 dilution, followed by Goat Anti-Rabbit IgG H&L (HRP) (**ab97051**) at 1/500 dilution. Cytoplasmic staining on rat hippocampal dentate gyrus is observed [PMID:23690918] [PMID:16814555]. Counter stained with Hematoxylin.

Secondary antibody only control: Used PBS instead of primary antibody, secondary antibody is Goat Anti-Rabbit IgG H&L (HRP) (**ab97051**) at 1/500 dilution.

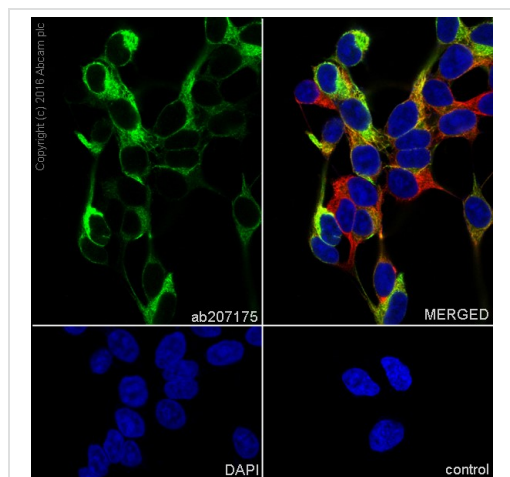
Perform heat mediated antigen retrieval with Tris/EDTA buffer pH 9.0 before commencing with IHC staining protocol.



Immunohistochemistry (Frozen sections) - Anti-Doublecortin antibody [EPR19997] (ab207175)

Immunohistochemical analysis of 4% paraformaldehyde-fixed, 0.2% Triton X-100 permeabilized frozen rat adult hippocampus tissue labeling Doublecortin with ab207175 at 1/100 dilution, followed by Goat anti-rabbit IgG (Alexa Fluor® 488) (**ab150077**) secondary antibody at 1/1000 dilution (green). Cytoplasmic staining on rat hippocampal dentate gyrus is observed [PMID:23690918] [PMID:16814555]. The nuclear counterstain is DAPI (blue).

Secondary antibody only control: Used PBS instead of primary antibody, secondary antibody is Goat anti-rabbit IgG (Alexa Fluor® 488) (**ab150077**) secondary antibody at 1/1000 dilution.

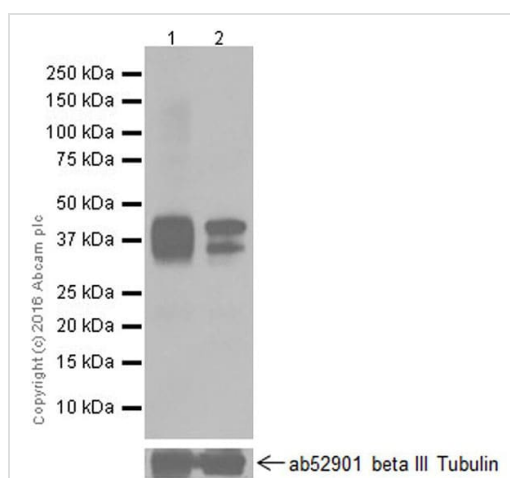


Immunocytochemistry/ Immunofluorescence - Anti-Doublecortin antibody [EPR19997] (ab207175)

Immunofluorescent analysis of 100% Methanol-fixed SH-SY5Y (Human neuroblastoma cell line from bone marrow) cells labeling Doublecortin with ab207175 at 1/250 dilution, followed by Goat anti-rabbit IgG (Alexa Fluor® 488) ([ab150077](#)) secondary antibody at 1/1000 dilution (green). Confocal image showing cytoplasmic staining on SH-SY5Y cell line.

The nuclear counter stain is DAPI (blue). Tubulin is detected with [ab195889](#) (Anti-alpha Tubulin antibody [DM1A] - Microtubule Marker (Alexa Fluor® 594)) at 1/200 dilution (red).

Secondary antibody only control: Used PBS instead of primary antibody, secondary antibody is Goat anti-rabbit IgG (Alexa Fluor® 488) ([ab150077](#)) at 1/1000 dilution.



Western blot - Anti-Doublecortin antibody [EPR19997] (ab207175)

**All lanes :** Anti-Doublecortin antibody [EPR19997] (ab207175) at 1/10000 dilution

**Lane 1 :** Human fetal brain lysate

**Lane 2 :** Human brain lysate

Lysates/proteins at 20 µg per lane.

#### Secondary

**All lanes :** Goat Anti-Rabbit IgG H&L (HRP) ([ab97051](#)) at 1/100000 dilution

**Predicted band size:** 40 kDa

**Observed band size:** 40 kDa

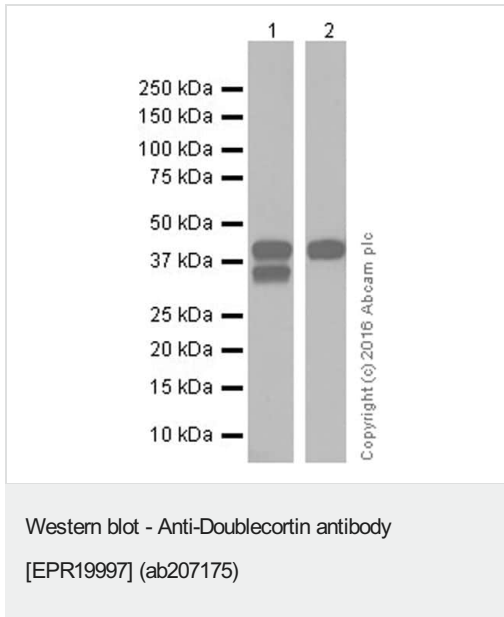
**Exposure time:** 3 seconds

Blocking/Dilution buffer: 5% NFDm/TBST.

The higher molecular weight band is phosphorylated form and the lower molecular weight band is non-phosphorylated form. (PMID:

17178868).

Doublecortin is highly expressed during embryonic development and downregulated in adult tissues. (PMID: 10399933).



**All lanes :** Anti-Doublecortin antibody [EPR19997] (ab207175) at 1/10000 dilution

**Lane 1 :** SH-SY5Y (Human neuroblastoma cell line from bone marrow) whole cell lysate

**Lane 2 :** Mouse brain lysate

Lysates/proteins at 20 µg per lane.

### Secondary

**All lanes :** Goat Anti-Rabbit IgG H&L (HRP) (**ab97051**) at 1/100000 dilution

**Predicted band size:** 40 kDa

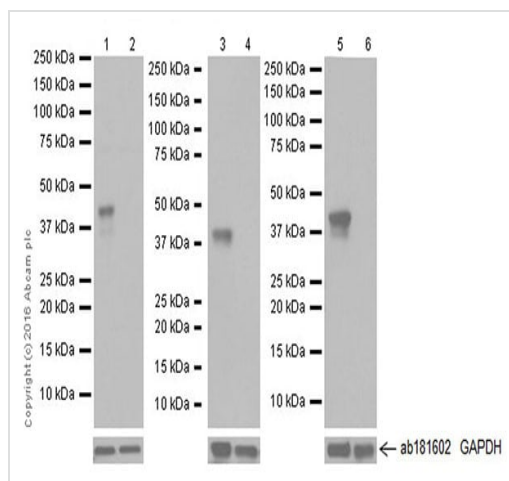
**Observed band size:** 40 kDa

Blocking/Dilution buffer: 5% NFDM/TBST.

Exposure times: Lane 1: 15 seconds; Lane 2: 3 minutes.

The higher molecular weight band is phosphorylated form and the lower molecular weight band is non-phosphorylated form. (PMID: 17178868).

Doublecortin is highly expressed during embryonic development and downregulated in adult tissues. (PMID: 10399933).



Western blot - Anti-Doublecortin antibody  
[EPR19997] (ab207175)

**All lanes** : Anti-Doublecortin antibody [EPR19997] (ab207175) at  
1/1000 dilution

**Lane 1** : Human fetal brain lysate

**Lane 2** : Human fetal heart lysate

**Lane 3** : Mouse brain lysate

**Lane 4** : Mouse heart lysate

**Lane 5** : Rat brain lysate

**Lane 6** : Rat heart lysate

Lysates/proteins at 10 µg per lane.

### Secondary

**All lanes** : Goat Anti-Rabbit IgG H&L (HRP) ([ab97051](#)) at  
1/100000 dilution

**Predicted band size:** 40 kDa

**Observed band size:** 40 kDa

Blocking/Dilution buffer: 5% NFDM/TBST.

Exposure times: Lane 1-4: 3 minutes; Lane 5/6: 10 seconds.

The observed expression profile is consistent with what has been  
described in the literature (PMID: 10550327).

Why choose a  
recombinant antibody?

**Research with confidence**  
Consistent and reproducible results

**Long-term and scalable supply**  
Recombinant technology

**Success from the first experiment**  
Confirmed specificity

**Ethical standards compliant**  
Animal-free production

Anti-Doublecortin antibody [EPR19997] (ab207175)

**Please note:** All products are "FOR RESEARCH USE ONLY. NOT FOR USE IN DIAGNOSTIC PROCEDURES"

### **Our Abpromise to you: Quality guaranteed and expert technical support**

---

- Replacement or refund for products not performing as stated on the datasheet
- Valid for 12 months from date of delivery
- Response to your inquiry within 24 hours
  
- We provide support in Chinese, English, French, German, Japanese and Spanish
- Extensive multi-media technical resources to help you
- We investigate all quality concerns to ensure our products perform to the highest standards

If the product does not perform as described on this datasheet, we will offer a refund or replacement. For full details of the Abpromise, please visit <https://www.abcam.co.jp/abpromise> or contact our technical team.

### **Terms and conditions**

---

- Guarantee only valid for products bought direct from Abcam or one of our authorized distributors