


# Anti-Dopamine Receptor D1 antibody [SG2-D1a] ab78021

★★★★★ [6 Abreviews](#) [6 References](#) [画像数 1](#)

### 製品の概要

製品名	Anti-Dopamine Receptor D1 antibody [SG2-D1a]
製品の詳細	Mouse monoclonal [SG2-D1a] to Dopamine Receptor D1
由来種	Mouse
アプリケーション	<b>適用あり:</b> WB
種交差性	<b>交差種:</b> Mouse <b>交差が予測される動物種:</b> Rat, Sheep  <b>非交差種:</b> Rabbit, Cow, Dog, Human, Pig
免疫原	Recombinant fragment corresponding to Rat Dopamine Receptor D1 (C terminal).
ポジティブ・コントロール	Mouse brain lysate; rat caudate tissue.
特記事項	<p>This antibody clone is manufactured by Abcam. If you require a custom buffer formulation or conjugation for your experiments, please contact <a href="mailto:orders@abcam.com">orders@abcam.com</a>.</p> <p>The Life Science industry has been in the grips of a reproducibility crisis for a number of years. Abcam is leading the way in addressing this with our range of recombinant monoclonal antibodies and knockout edited cell lines for gold-standard validation. Please check that this product meets your needs before purchasing.</p> <p>If you have any questions, special requirements or concerns, please send us an inquiry and/or contact our Support team ahead of purchase. Recommended alternatives for this product can be found below, along with publications, customer reviews and Q&amp;As</p>

### 製品の特性

製品の状態	Liquid
保存方法	Shipped at 4°C. Store at +4°C.
バッファー	pH: 7.40 Preservative: 0.02% Sodium azide Constituents: PBS, 6.97% L-Arginine
精製度	Protein G purified
ポリ/モノ	モノクローナル
クローン名	SG2-D1a
アイソタイプ	IgG2b

## アプリケーション

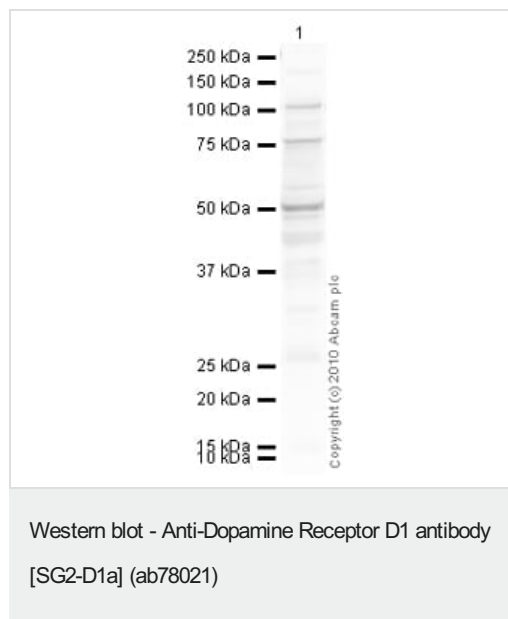
**The Abpromise guarantee** Abpromise保証は、次のテスト済みアプリケーションにおけるab78021の使用に適用されます  
アプリケーションノートには、推奨の開始希釈率がありますが、適切な希釈率につきましてはご検討ください。

アプリケーション	Abreviews	特記事項
WB	★★★★★ (1)	1/250 - 1/500. Predicted molecular weight: 49 kDa.

## ターゲット情報

機能	Dopamine receptor whose activity is mediated by G proteins which activate adenylyl cyclase.
組織特異性	Detected in caudate, nucleus accumbens and in the olfactory tubercle.
配列類似性	Belongs to the G-protein coupled receptor 1 family.
細胞内局在	Cell membrane. Endoplasmic reticulum membrane. Transport from the endoplasmic reticulum to the cell surface is regulated by interaction with DNAJC14.

## 画像



Anti-Dopamine Receptor D1 antibody [SG2-D1a] (ab78021) at 2 µg/ml + Brain (Mouse) Tissue Lysate at 20 µg

### Secondary

Goat Anti-Mouse IgG H&L (HRP) preadsorbed ([ab97040](#)) at 1/5000 dilution

Developed using the ECL technique.

Performed under reducing conditions.

**Predicted band size:** 49 kDa

**Observed band size:** 50 kDa

**Additional bands at:** 100 kDa, 75 kDa. We are unsure as to the identity of these extra bands.

**Exposure time:** 4 minutes

**Please note:** All products are "FOR RESEARCH USE ONLY. NOT FOR USE IN DIAGNOSTIC PROCEDURES"

## Our Abpromise to you: Quality guaranteed and expert technical support

- Replacement or refund for products not performing as stated on the datasheet

- Valid for 12 months from date of delivery
- Response to your inquiry within 24 hours
- We provide support in Chinese, English, French, German, Japanese and Spanish
- Extensive multi-media technical resources to help you
- We investigate all quality concerns to ensure our products perform to the highest standards

If the product does not perform as described on this datasheet, we will offer a refund or replacement. For full details of the Abpromise, please visit <https://www.abcam.co.jp/abpromise> or contact our technical team.

#### **Terms and conditions**

---

- Guarantee only valid for products bought direct from Abcam or one of our authorized distributors