





Anti-Dopamine Receptor D1 antibody ab40653

★☆☆☆☆ **2 Abreviews** **15 References** 画像数 **2**

製品の概要

製品名	Anti-Dopamine Receptor D1 antibody
製品の詳細	Rabbit polyclonal to Dopamine Receptor D1
由来種	Rabbit
特異性	This antibody shows reactivity with: D1 Dopamine Receptor (9-21) 100%; D1 Dopamine Receptor 90%; D2 Dopamine Receptor (272-282) 0%; D2 Dopamine Receptor 0%; D3 Dopamine Receptor (2-10) 0%; D3 Dopamine Receptor 0%; D4 Dopamine Receptor (176-185) 0%; D4 Dopamine Receptor 0%; D5 Dopamine Receptor (23-35) 0%; and D5 Dopamine Receptor 0%.
アプリケーション	適用あり: ICC/IF, WB, IHC-P
種交差性	交差種: Rat, Human 交差が予測される動物種: Mouse, Cow, Pig, Macaque monkey, Rhesus monkey 
免疫原	Synthetic peptide corresponding to Human Dopamine Receptor D1 aa 1-100 (Cysteine residue).  Run BLAST with  Run BLAST with 
特記事項	<p>The Life Science industry has been in the grips of a reproducibility crisis for a number of years. Abcam is leading the way in addressing this with our range of recombinant monoclonal antibodies and knockout edited cell lines for gold-standard validation. Please check that this product meets your needs before purchasing.</p> <p>If you have any questions, special requirements or concerns, please send us an inquiry and/or contact our Support team ahead of purchase. Recommended alternatives for this product can be found below, along with publications, customer reviews and Q&As</p>

製品の特性

製品の状態	Lyophilized:Reconstitute with 0.1ml of PBS which contains 10 mg/ml BSA.
保存方法	Shipped at 4°C. Upon delivery aliquot and store at -20°C or -80°C. Avoid repeated freeze / thaw cycles.
バッファー	Constituent: Whole serum
精製度	Whole antiserum
ポリ/モノ	ポリクローナル
アイソタイプ	IgG

アプリケーション

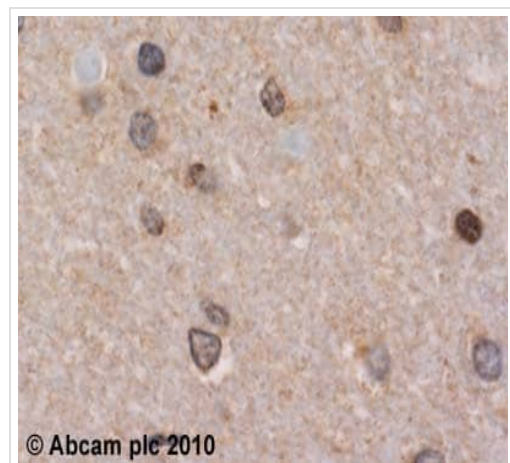
The Abpromise guarantee **Abpromise保証は、次のテスト済みアプリケーションにおけるab40653の使用に適用されます**
アプリケーションノートには、推奨の開始希釈率がありますが、適切な希釈率につきましてはご検討ください。

アプリケーション	Abreviews	特記事項
ICC/IF		Use at an assay dependent concentration.
WB		1/1000. Detects a band of approximately 49 kDa (predicted molecular weight: 49 kDa). With this antibody, we have found that blocking with 5% goat or donkey serum significantly reduces background as compared to BSA or milk.
IHC-P		1/500.

ターゲット情報

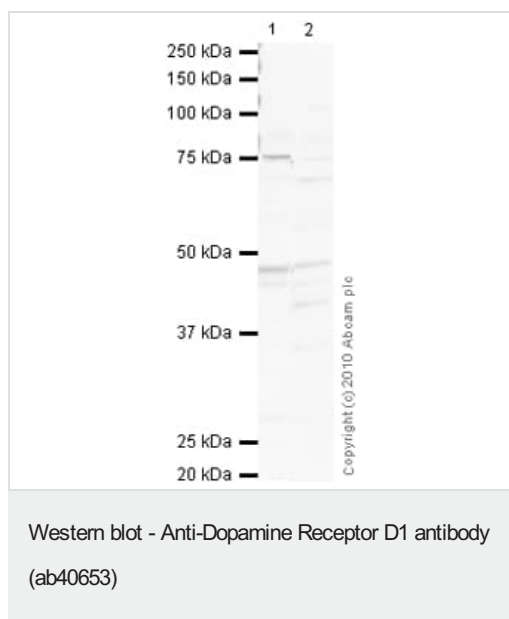
機能	Dopamine receptor whose activity is mediated by G proteins which activate adenylyl cyclase.
組織特異性	Detected in caudate, nucleus accumbens and in the olfactory tubercle.
配列類似性	Belongs to the G-protein coupled receptor 1 family.
細胞内局在	Cell membrane. Endoplasmic reticulum membrane. Transport from the endoplasmic reticulum to the cell surface is regulated by interaction with DNAJC14.

画像



Immunohistochemistry (Formalin/PFA-fixed paraffin-embedded sections) - Anti-Dopamine Receptor D1 antibody (ab40653)

ab40653 (1:500) staining Dopamine Receptor D1 in human cerebellum using an automated system (DAKO Autostainer Plus). Using this protocol there is strong staining of cytoplasmic and membrane regions in the fibrous glial cells. Sections were rehydrated and antigen retrieved with the Dako 3 in 1 AR buffer EDTA pH 9.0 in a DAKO PT link. Slides were peroxidase blocked in 3% H₂O₂ in methanol for 10 mins. They were then blocked with Dako Protein block for 10 minutes (containing casein 0.25% in PBS) then incubated with primary antibody for 20 min and detected with Dako envision flex amplification kit for 30 minutes. Colorimetric detection was completed with Diaminobenzidine for 5 minutes. Slides were counterstained with Haematoxylin and coverslipped under DePeX. Please note that, for manual staining, optimization of primary antibody concentration and incubation time is recommended. Signal amplification may be required.



All lanes : Anti-Dopamine Receptor D1 antibody (ab40653) at 1/1000 dilution

Lane 1 : Human brain tissue lysate - total protein ([ab29466](#))

Lane 2 : Rat Cortex Tissue Lysate

Lysates/proteins at 10 µg per lane.

Secondary

All lanes : Goat polyclonal to Rabbit IgG - H&L - Pre-Adsorbed (HRP) at 1/3000 dilution

Developed using the ECL technique.

Performed under reducing conditions.

Predicted band size: 49 kDa

Observed band size: 49 kDa

Additional bands at: 42 kDa, 75 kDa. We are unsure as to the identity of these extra bands.

Exposure time: 90 seconds

Please note: All products are "FOR RESEARCH USE ONLY. NOT FOR USE IN DIAGNOSTIC PROCEDURES"

Our Abpromise to you: Quality guaranteed and expert technical support

- Replacement or refund for products not performing as stated on the datasheet
- Valid for 12 months from date of delivery
- Response to your inquiry within 24 hours
- We provide support in Chinese, English, French, German, Japanese and Spanish
- Extensive multi-media technical resources to help you
- We investigate all quality concerns to ensure our products perform to the highest standards

If the product does not perform as described on this datasheet, we will offer a refund or replacement. For full details of the Abpromise, please visit <https://www.abcam.co.jp/abpromise> or contact our technical team.

Terms and conditions

- Guarantee only valid for products bought direct from Abcam or one of our authorized distributors