

Anti-Dopamine beta Hydroxylase antibody ab96615

★★★★★ [1 Abreviews](#) [3 References](#) [画像数 2](#)

製品の概要

製品名	Anti-Dopamine beta Hydroxylase antibody
製品の詳細	Rabbit polyclonal to Dopamine beta Hydroxylase
由来種	Rabbit
アプリケーション	適用あり: WB, IHC-P
種交差性	交差種: Human
免疫原	Recombinant protein fragment corresponding to a region within amino acids 8 and 290 of Dopamine beta Hydroxylase (NP_000778).
特記事項	<p>The Life Science industry has been in the grips of a reproducibility crisis for a number of years. Abcam is leading the way in addressing this with our range of recombinant monoclonal antibodies and knockout edited cell lines for gold-standard validation. Please check that this product meets your needs before purchasing.</p> <p>If you have any questions, special requirements or concerns, please send us an inquiry and/or contact our Support team ahead of purchase. Recommended alternatives for this product can be found below, along with publications, customer reviews and Q&As</p>

製品の特性

製品の状態	Liquid
保存方法	Shipped at 4°C. Upon delivery aliquot and store at -20°C or -80°C. Avoid repeated freeze / thaw cycles.
バッファー	pH: 7.00 Preservative: 0.025% Proclin 300 Constituents: 79% PBS, 20% Glycerol (glycerin, glycerine)
精製度	Immunogen affinity purified
ポリ/モノ	ポリクローナル
アイソタイプ	IgG

アプリケーション

The Abpromise guarantee

Abpromise保証は、次のテスト済みアプリケーションにおけるab96615の使用に適用されます

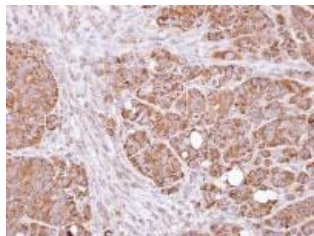
アプリケーションノートには、推奨の開始希釈率がありますが、適切な希釈率につきましてはご確認ください。

アプリケーション	Abreviews	特記事項
WB		1/500 - 1/3000. Predicted molecular weight: 69 kDa.
IHC-P		1/100 - 1/500.

ターゲット情報

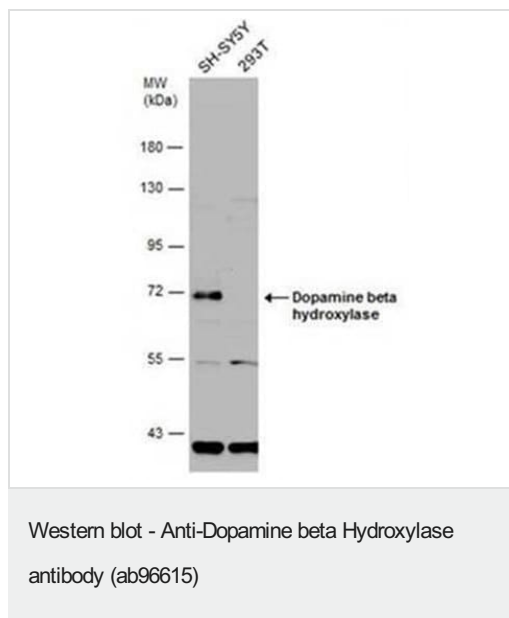
機能	Conversion of dopamine to noradrenaline.
パスウェイ	Catecholamine biosynthesis; (R)-noradrenaline biosynthesis; (R)-noradrenaline from dopamine: step 1/1.
関連疾患	Defects in DBH are the cause of dopamine beta-hydroxylase deficiency (DBH deficiency) [MIM:223360]; also known as norepinephrine deficiency or noradrenaline deficiency. This disorder is characterized by profound deficits in autonomic and cardiovascular function, but apparently only subtle signs, if any, of central nervous system dysfunction.
配列類似性	Belongs to the copper type II ascorbate-dependent monooxygenase family. Contains 1 DOMON domain.
細胞内局在	Cytoplasmic vesicle > secretory vesicle lumen. Cytoplasmic vesicle > secretory vesicle > chromaffin granule lumen and Cytoplasmic vesicle > secretory vesicle membrane. Cytoplasmic vesicle > secretory vesicle > chromaffin granule membrane.

画像



Immunohistochemical analysis of Dopamine beta Hydroxylase in paraffin embedded SW480 xenograft, using ab96615 at a 1/500 dilution.

Immunohistochemistry (Formalin/PFA-fixed paraffin-embedded sections) - Anti-Dopamine beta Hydroxylase antibody (ab96615)



All lanes : Anti-Dopamine beta Hydroxylase antibody (ab96615) at 1/2000 dilution

Lane 1 : SH-SY5Y whole cell extract

Lane 2 : 293T whole cell extract

Lysates/proteins at 30 µg per lane.

Predicted band size: 69 kDa

Separated by 7.5% SDS-PAGE.

Please note: All products are "FOR RESEARCH USE ONLY. NOT FOR USE IN DIAGNOSTIC PROCEDURES"

Our Abpromise to you: Quality guaranteed and expert technical support

- Replacement or refund for products not performing as stated on the datasheet
- Valid for 12 months from date of delivery
- Response to your inquiry within 24 hours
- We provide support in Chinese, English, French, German, Japanese and Spanish
- Extensive multi-media technical resources to help you
- We investigate all quality concerns to ensure our products perform to the highest standards

If the product does not perform as described on this datasheet, we will offer a refund or replacement. For full details of the Abpromise, please visit <https://www.abcam.co.jp/abpromise> or contact our technical team.

Terms and conditions

- Guarantee only valid for products bought direct from Abcam or one of our authorized distributors