

# Anti-Dopamine beta Hydroxylase antibody ab19353

★★★★★ [2 Abreviews](#) [8 References](#) [画像数 2](#)

### 製品の概要

製品名	Anti-Dopamine beta Hydroxylase antibody
製品の詳細	Sheep polyclonal to Dopamine beta Hydroxylase
由来種	Sheep
アプリケーション	<b>適用あり:</b> ICC/IF, IHC-P
種交差性	<b>交差種:</b> Rat
免疫原	Synthetic peptide corresponding to Rat Dopamine beta Hydroxylase aa 43-62. Sequence: SEPPESFPYHIPLDPEGTL <div>  <a href="#">Run BLAST with</a>  <a href="#">Run BLAST with</a> </div>
特記事項	<p>Detects human, bovine, rat and mouse DBH. It is not effective for immunohistochemistry in human brain</p> <p>The Life Science industry has been in the grips of a reproducibility crisis for a number of years. Abcam is leading the way in addressing this with our range of recombinant monoclonal antibodies and knockout edited cell lines for gold-standard validation. Please check that this product meets your needs before purchasing.</p> <p>If you have any questions, special requirements or concerns, please send us an inquiry and/or contact our Support team ahead of purchase. Recommended alternatives for this product can be found below, along with publications, customer reviews and Q&amp;As</p>

### 製品の特性

製品の状態	Liquid
保存方法	Shipped at 4°C. Upon delivery aliquot and store at -20°C or -80°C. Avoid repeated freeze / thaw cycles.
バッファー	Preservative: 0.05% Sodium azide
精製度	Whole antiserum
ポリ/モノ	ポリクローナル

### アプリケーション

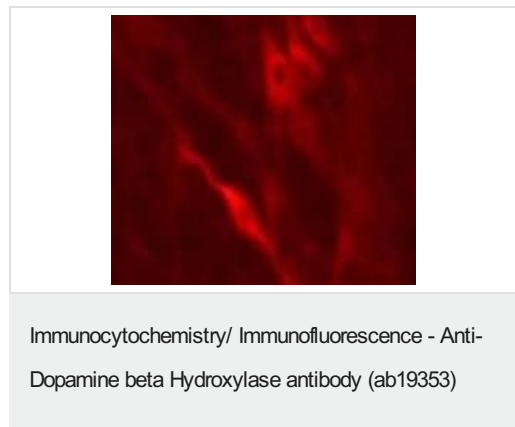
**The Abpromise guarantee**      **Abpromise保証は、**次のテスト済みアプリケーションにおけるab19353の使用に適用されます  
 アプリケーションノートには、推奨の開始希釈率がありますが、適切な希釈率につきましてはご検討ください。

アプリケーション	Abreviews	特記事項
ICC/IF		1/5000.
IHC-P		1/2000.

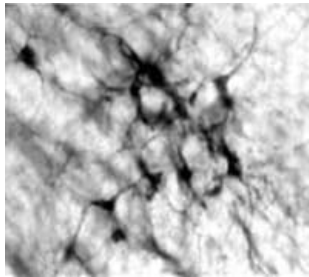
## ターゲット情報

機能	Conversion of dopamine to noradrenaline.
パスウェイ	Catecholamine biosynthesis; (R)-noradrenaline biosynthesis; (R)-noradrenaline from dopamine: step 1/1.
関連疾患	Defects in DBH are the cause of dopamine beta-hydroxylase deficiency (DBH deficiency) [MIM:223360]; also known as norepinephrine deficiency or noradrenaline deficiency. This disorder is characterized by profound deficits in autonomic and cardiovascular function, but apparently only subtle signs, if any, of central nervous system dysfunction.
配列類似性	Belongs to the copper type II ascorbate-dependent monooxygenase family. Contains 1 DOMON domain.
細胞内局在	Cytoplasmic vesicle > secretory vesicle lumen. Cytoplasmic vesicle > secretory vesicle > chromaffin granule lumen and Cytoplasmic vesicle > secretory vesicle membrane. Cytoplasmic vesicle > secretory vesicle > chromaffin granule membrane.

## 画像



Immunofluorescent staining of DBH in rat neuron cells using ab19353.



Immunofluorescent stain of DBH in rat brain tissue using ab19353.

Immunohistochemistry (Formalin/PFA-fixed paraffin-embedded sections) - Anti-Dopamine beta Hydroxylase antibody (ab19353)

**Please note:** All products are "FOR RESEARCH USE ONLY. NOT FOR USE IN DIAGNOSTIC PROCEDURES"

### Our Abpromise to you: Quality guaranteed and expert technical support

---

- Replacement or refund for products not performing as stated on the datasheet
- Valid for 12 months from date of delivery
- Response to your inquiry within 24 hours
- We provide support in Chinese, English, French, German, Japanese and Spanish
- Extensive multi-media technical resources to help you
- We investigate all quality concerns to ensure our products perform to the highest standards

If the product does not perform as described on this datasheet, we will offer a refund or replacement. For full details of the Abpromise, please visit <https://www.abcam.co.jp/abpromise> or contact our technical team.

### Terms and conditions

---

- Guarantee only valid for products bought direct from Abcam or one of our authorized distributors