

Anti-DOK3 antibody ab1357

3 References [画像数 2](#)

製品の概要

製品名	Anti-DOK3 antibody
製品の詳細	Goat polyclonal to DOK3
由来種	Goat
アプリケーション	適用あり: WB
種交差性	交差種: Human 交差が予測される動物種: Rat 
免疫原	Synthetic peptide corresponding to Human DOK3 aa 450-550 (C terminal). Database link: NP_079148.2 <div>  Run BLAST with  Run BLAST with </div>
ポジティブ・コントロール	Human PBMC lysate.
特記事項	<p>The Life Science industry has been in the grips of a reproducibility crisis for a number of years. Abcam is leading the way in addressing this with our range of recombinant monoclonal antibodies and knockout edited cell lines for gold-standard validation. Please check that this product meets your needs before purchasing.</p> <p>If you have any questions, special requirements or concerns, please send us an inquiry and/or contact our Support team ahead of purchase. Recommended alternatives for this product can be found below, along with publications, customer reviews and Q&As</p>

製品の特性

製品の状態	Liquid
保存方法	Shipped at 4°C. Upon delivery aliquot and store at -20°C. Avoid freeze / thaw cycles.
バッファー	pH: 7.30 Preservative: 0.02% Sodium azide Constituents: Tris buffered saline, 0.5% BSA
精製度	Immunogen affinity purified
特記事項 (精製)	Purified from goat serum by ammonium sulphate precipitation followed by antigen affinity chromatography using the immunizing peptide.
ポリ/モノ	ポリクローナル
アイソタイプ	IgG

アプリケーション

The Abpromise guarantee

Abpromise保証は、次のテスト済みアプリケーションにおけるab1357の使用に適用されます

アプリケーションノートには、推奨の開始希釈率がありますが、適切な希釈率につきましてはご確認ください。

アプリケーション	Abreviews	特記事項
WB		Use a concentration of 1 - 3 µg/ml. Detects a band of approximately 60 kDa (predicted molecular weight: 57 kDa). 1 hour primary incubation is recommended for this product.

ターゲット情報

機能	DOK proteins are enzymatically inert adaptor or scaffolding proteins. They provide a docking platform for the assembly of multimolecular signaling complexes. DOK3 is a negative regulator of JNK signaling in B-cells through interaction with INPP5D/SHIP1. May modulate Abl function.
組織特異性	Expressed in spleen.
配列類似性	Belongs to the DOK family. Type A subfamily. Contains 1 IRS-type PTB domain. Contains 1 PH domain.
ドメイン	PTB domain mediates receptor interaction.
翻訳後修飾	Constitutively tyrosine-phosphorylated. On IL2 stimulation, phosphorylated on C-terminal tyrosine residues possibly by Src kinases. Can also be phosphorylated by ABL kinase.
細胞内局在	Cytoplasm. Cell membrane.

画像



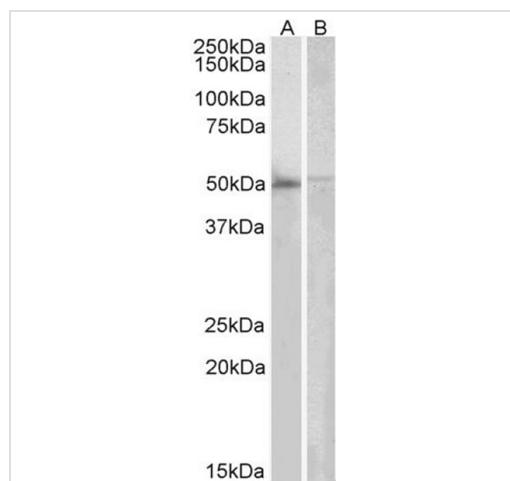
Anti-DOK3 antibody (ab1357) at 0.1 µg/ml + Human PBMC lysate (RIPA buffer) at 35 µg

Predicted band size: 57 kDa

ab1357 staining (1 µg/ml) of Human PBMC lysate (RIPA buffer, 35 µg total protein per lane). Primary incubated for 1 hour.

Detected by western blot using chemiluminescence.

Primary incubated for 1 hour. Detected by chemiluminescence.



Western blot - Anti-DOK3 antibody (ab1357)

All lanes : Anti-DOK3 antibody (ab1357) at 2 µg/ml

Lane 1 : Human Bone Marrow lysates

Lane 2 : Peripheral blood leukocyte lysates

Lysates/proteins at 35 µg per lane.

Predicted band size: 57 kDa

Please note: All products are "FOR RESEARCH USE ONLY. NOT FOR USE IN DIAGNOSTIC PROCEDURES"

Our Abpromise to you: Quality guaranteed and expert technical support

- Replacement or refund for products not performing as stated on the datasheet
- Valid for 12 months from date of delivery
- Response to your inquiry within 24 hours
- We provide support in Chinese, English, French, German, Japanese and Spanish
- Extensive multi-media technical resources to help you
- We investigate all quality concerns to ensure our products perform to the highest standards

If the product does not perform as described on this datasheet, we will offer a refund or replacement. For full details of the Abpromise, please visit <https://www.abcam.co.jp/abpromise> or contact our technical team.

Terms and conditions

- Guarantee only valid for products bought direct from Abcam or one of our authorized distributors