


Anti-DOCK9/Trg antibody ab70272

1 [References](#) **2** [画像数](#)

製品の概要

製品名	Anti-DOCK9/Trg antibody
製品の詳細	Rabbit polyclonal to DOCK9/Trg
由来種	Rabbit
アプリケーション	適用あり: WB, IP
種交差性	交差種: Human 交差が予測される動物種: Opossum, Orangutan 
免疫原	Synthetic peptide, corresponding to amino acids 1-50 of Human DOCK9 (NP_056111.1)
ポジティブ・コントロール	HeLa whole cell lysate
特記事項	<p>The Life Science industry has been in the grips of a reproducibility crisis for a number of years. Abcam is leading the way in addressing this with our range of recombinant monoclonal antibodies and knockout edited cell lines for gold-standard validation. Please check that this product meets your needs before purchasing.</p> <p>If you have any questions, special requirements or concerns, please send us an inquiry and/or contact our Support team ahead of purchase. Recommended alternatives for this product can be found below, along with publications, customer reviews and Q&As</p>

製品の特性

製品の状態	Liquid
保存方法	Shipped at 4°C. Upon delivery aliquot and store at -20°C. Avoid freeze / thaw cycles.
バッファー	pH: 6.8 Preservative: 0.09% Sodium azide Constituents: 0.1% BSA, Tris buffered saline
精製度	Immunogen affinity purified
ポリ/モノ	ポリクローナル
アイソタイプ	IgG

アプリケーション

The Abpromise guarantee

Abpromise保証は、 次のテスト済みアプリケーションにおけるab70272の使用に適用されます

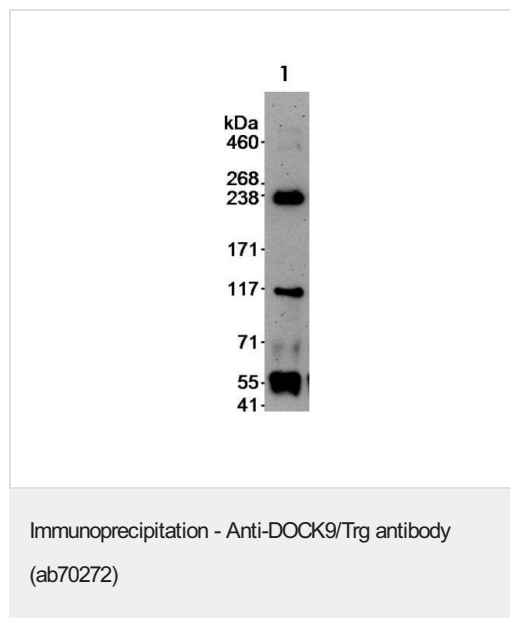
アプリケーションノートには、推奨の開始希釈率がありますが、適切な希釈率につきましてはご確認ください。

アプリケーション	Abreviews	特記事項
WB		1/5000 - 1/15000. Detects a band of approximately 236 kDa (predicted molecular weight: 236 kDa).
IP		Use at 2-5 µg/mg of lysate.

ターゲット情報

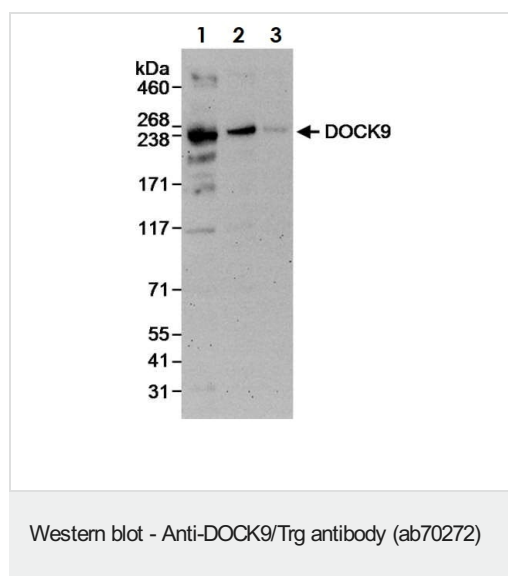
機能	Guanine nucleotide-exchange factor (GEF) that activates CDC42 by exchanging bound GDP for free GTP. Overexpression induces filopodia formation.
組織特異性	Widely expressed, with highest expression in heart and placenta. Expressed at intermediate level in kidney, brain, lung and skeletal muscle.
配列類似性	Belongs to the DOCK family. Contains 1 DHR-1 domain. Contains 1 DHR-2 domain. Contains 1 PH domain.
ドメイン	The DHR-2 domain is necessary and sufficient for the GEF activity.
細胞内局在	Endomembrane system. Associated with membranes.

画像



Immunoprecipitation of HeLa using 3ug/mL ab70272

Lane 1: ab70272



All lanes : Anti-DOCK9/Trg antibody (ab70272)

Lane 1 : HeLa cell lysate at 50 μ g

Lane 2 : HeLa cell lysate at 15 μ g

Lane 3 : HeLa cell lysate at 5 μ g

Developed using the ECL technique.

Predicted band size: 236 kDa

Exposure time: 3 minutes

Please note: All products are "FOR RESEARCH USE ONLY. NOT FOR USE IN DIAGNOSTIC PROCEDURES"

Our Abpromise to you: Quality guaranteed and expert technical support

- Replacement or refund for products not performing as stated on the datasheet
- Valid for 12 months from date of delivery
- Response to your inquiry within 24 hours
- We provide support in Chinese, English, French, German, Japanese and Spanish
- Extensive multi-media technical resources to help you
- We investigate all quality concerns to ensure our products perform to the highest standards

If the product does not perform as described on this datasheet, we will offer a refund or replacement. For full details of the Abpromise, please visit <https://www.abcam.co.jp/abpromise> or contact our technical team.

Terms and conditions

- Guarantee only valid for products bought direct from Abcam or one of our authorized distributors