

Anti-DOCK180 antibody ab97325

4 References [画像数 5](#)

医薬用外劇物

製品の概要

製品名	Anti-DOCK180 antibody
製品の詳細	Rabbit polyclonal to DOCK180
由来種	Rabbit
アプリケーション	適用あり: ICC/IF, WB, IHC-P
種交差性	交差種: Mouse, Rat, Human
免疫原	Synthetic peptide corresponding to Human DOCK180 aa 1852-1865. Sequence: TTRKQASVDSGIVQ Database link: Q14185 Run BLAST with Run BLAST with
ポジティブ・コントロール	WB: HEK-293T whole cell lysate. C8D30 , NIH/3T3 , Raw264.7 , C2C12 whole cell extracts. PC-12 whole cell extracts. ICC/IF: A431 cells IHC-P: Lung cancer.
特記事項	<p>The Life Science industry has been in the grips of a reproducibility crisis for a number of years. Abcam is leading the way in addressing this with our range of recombinant monoclonal antibodies and knockout edited cell lines for gold-standard validation. Please check that this product meets your needs before purchasing.</p> <p>If you have any questions, special requirements or concerns, please send us an inquiry and/or contact our Support team ahead of purchase. Recommended alternatives for this product can be found below, along with publications, customer reviews and Q&As</p>

製品の特性

製品の状態	Liquid
保存方法	Shipped at 4°C. Store at +4°C short term (1-2 weeks). Upon delivery aliquot. Store at -20°C or -80°C. Avoid freeze / thaw cycle.
バッファー	pH: 7.00 Preservative: 0.01% Thimerosal (merthiolate) Constituents: 79.99% PBS, 20% Glycerol (glycerin, glycerine)
精製度	Immunogen affinity purified

ポリ/モノ
アイソタイプ

ポリクローナル
IgG

アプリケーション

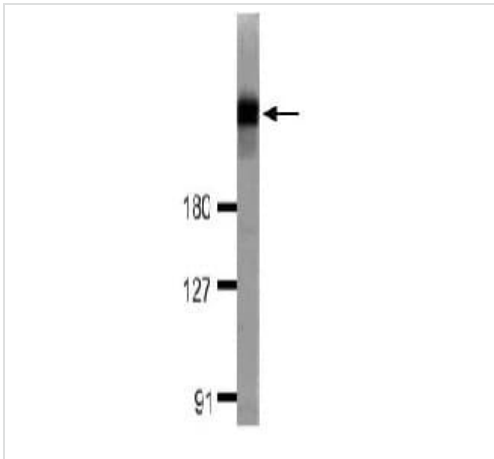
The Abpromise guarantee **Abpromise保証は、次のテスト済みアプリケーションにおけるab97325の使用に適用されず**
アプリケーションノートには、推奨の開始希釈率がありますが、適切な希釈率につきましてはご検討ください。

アプリケーション	Abreviews	特記事項
ICC/IF		1/100 - 1/1000.
WB		1/500 - 1/3000. Predicted molecular weight: 215 kDa.
IHC-P		1/100 - 1/1000.

ターゲット情報

機能	Involved in cytoskeletal rearrangements required for phagocytosis of apoptotic cells and cell motility. Functions as a guanine nucleotide exchange factor (GEF), which activates Rac Rho small GTPases by exchanging bound GDP for free GTP. Its GEF activity may be enhanced by ELMO1.
組織特異性	Highly expressed in placenta, lung, kidney, pancreas and ovary. Expressed at intermediate level in thymus, testes and colon.
配列類似性	Belongs to the DOCK family. Contains 1 DHR-1 (CZH-1) domain. Contains 1 DHR-2 (CZH-2) domain. Contains 1 SH3 domain.
ドメイン	The DHR-2 domain is necessary and sufficient for the GEF activity.
細胞内局在	Cytoplasm. Membrane. Recruited to membranes via its interaction with phosphatidylinositol 3,4,5-triphosphate.

画像

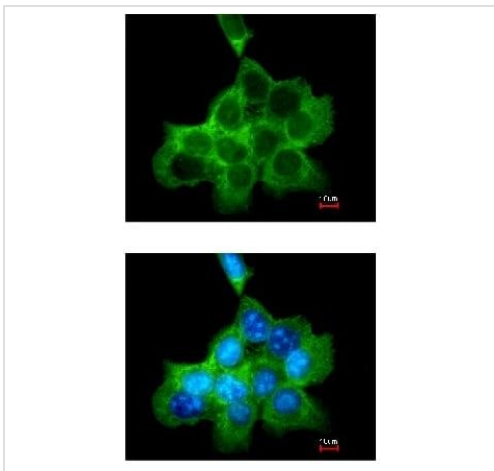


Western blot - Anti-DOCK180 antibody (ab97325)

Anti-DOCK180 antibody (ab97325) at 1/1000 dilution + HEK-293T whole cell lysate at 30 μ g

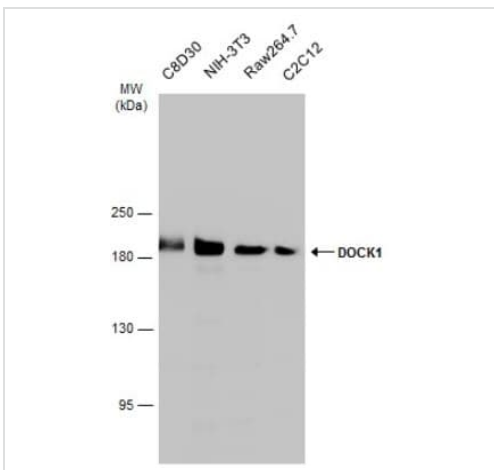
Predicted band size: 215 kDa

7.5% SDS Page



Immunocytochemistry/ Immunofluorescence - Anti-DOCK180 antibody (ab97325)

Immunofluorescence analysis of DOCK180 in methanol fixed A431 using ab97325 at a 1/200 dilution.



Western blot - Anti-DOCK180 antibody (ab97325)

All lanes : Anti-DOCK180 antibody (ab97325) at 1/1000 dilution

Lane 1 : C8D30 whole cell extract

Lane 2 : NIH/3T3 whole cell extract

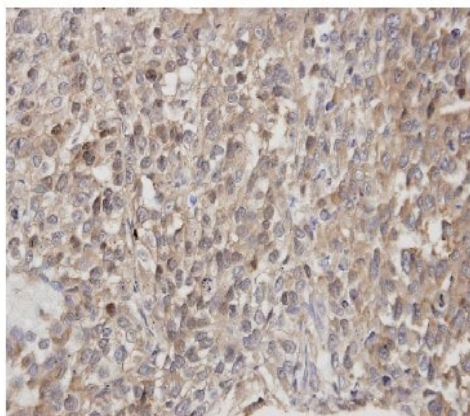
Lane 3 : Raw264.7 whole cell extract

Lane 4 : C2C12 whole cell extract

Lysates/proteins at 30 μ g per lane.

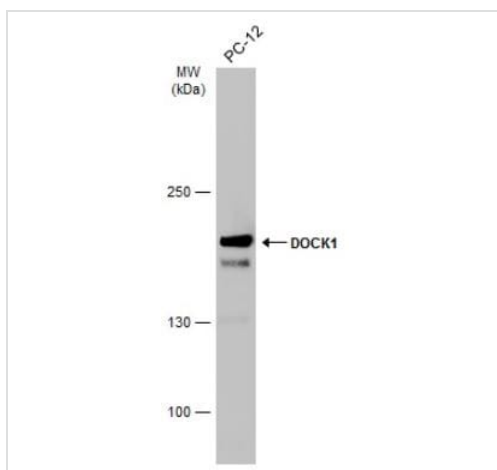
Predicted band size: 215 kDa

5% SDS-PAGE.



Immunohistochemical analysis of DOCK180 in paraffin embedded Lung cancer using ab97325 at a 1/100 dilution.

Immunohistochemistry (Formalin/PFA-fixed paraffin-embedded sections) - Anti-DOCK180 antibody (ab97325)



Anti-DOCK180 antibody (ab97325) at 1/1000 dilution + PC-12 whole cell extract at 30 µg

Predicted band size: 215 kDa

5% SDS-PAGE

Western blot - Anti-DOCK180 antibody (ab97325)

Please note: All products are "FOR RESEARCH USE ONLY. NOT FOR USE IN DIAGNOSTIC PROCEDURES"

Our Abpromise to you: Quality guaranteed and expert technical support

- Replacement or refund for products not performing as stated on the datasheet
- Valid for 12 months from date of delivery
- Response to your inquiry within 24 hours
- We provide support in Chinese, English, French, German, Japanese and Spanish
- Extensive multi-media technical resources to help you
- We investigate all quality concerns to ensure our products perform to the highest standards

If the product does not perform as described on this datasheet, we will offer a refund or replacement. For full details of the Abpromise, please visit <https://www.abcam.co.jp/abpromise> or contact our technical team.

Terms and conditions

- Guarantee only valid for products bought direct from Abcam or one of our authorized distributors