

# Anti-DNA Polymerase theta antibody ab111218

[2 Abreviews](#) [画像数 1](#)

### 製品の概要

---

製品名	Anti-DNA Polymerase theta antibody
製品の詳細	Rabbit polyclonal to DNA Polymerase theta
由来種	Rabbit
アプリケーション	<b>適用あり:</b> IHC-P
種交差性	<b>交差種:</b> Human
免疫原	Synthetic peptide: H FSSLDIAV CT IERANGL INR LIEENK MDLL GMVVV DELHM LGDS HRGYLL, corresponding to amino acids 180-230 of Human DNA Polymerase theta <a href="#">Run BLAST with ExPASy</a> <a href="#">Run BLAST with NCBI</a>
ポジティブ・コントロール	Human breast carcinoma tissue.
特記事項	<p>The Life Science industry has been in the grips of a reproducibility crisis for a number of years. Abcam is leading the way in addressing this with our range of recombinant monoclonal antibodies and knockout edited cell lines for gold-standard validation. Please check that this product meets your needs before purchasing.</p> <p>If you have any questions, special requirements or concerns, please send us an inquiry and/or contact our Support team ahead of purchase. Recommended alternatives for this product can be found below, along with publications, customer reviews and Q&amp;As</p>

### 製品の特性

---

製品の状態	Liquid
保存方法	Shipped at 4°C. Store at -20°C. Stable for 12 months at -20°C.
バッファー	pH: 7.40 Preservative: 0.02% Sodium azide Constituents: 49.1% PBS, 0.88% Sodium chloride, 50% Glycerol  without Mg <sup>2+</sup> and Ca <sup>2+</sup>
精製度	Immunogen affinity purified
特記事項 (精製)	ab111218 was affinity-purified from Rabbit antiserum by affinity-chromatography using epitope-specific immunogen.
ポリモノ	ポリクローナル
アイソタイプ	IgG

## アプリケーション

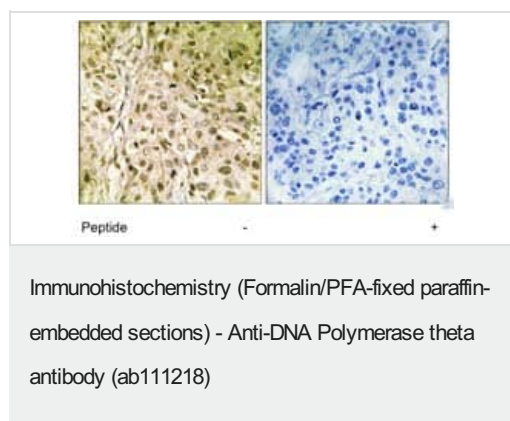
**The Abpromise guarantee** Abpromise保証は、次のテスト済みアプリケーションにおけるab111218の使用に適用されます  
アプリケーションノートには、推奨の開始希釈率がありますが、適切な希釈率につきましてはご確認ください。

アプリケーション	Abreviews	特記事項
IHC-P		1/50 - 1/100. Perform heat mediated antigen retrieval with citrate buffer pH 6 before commencing with IHC staining protocol.

## ターゲット情報

機能	Has a DNA polymerase activity on nicked double-stranded DNA and on a singly primed DNA template. The enzyme activity is resistant to aphidicolin, and inhibited by dideoxynucleotides. Exhibits a single-stranded DNA-dependent ATPase activity. Could be involved in the repair of interstrand cross-links.
組織特異性	Highly expressed in testis.
配列類似性	Belongs to the DNA polymerase type-A family. Contains 1 helicase ATP-binding domain. Contains 1 helicase C-terminal domain.

## 画像



ab111218 at 1/50 dilution staining DNA Polymerase theta in paraffin-embedded Human Breast carcinoma tissue by Immunohistochemistry. The image on the right is treated with the synthesized peptide.

**Please note:** All products are "FOR RESEARCH USE ONLY. NOT FOR USE IN DIAGNOSTIC PROCEDURES"

## Our Abpromise to you: Quality guaranteed and expert technical support

- Replacement or refund for products not performing as stated on the datasheet
- Valid for 12 months from date of delivery
- Response to your inquiry within 24 hours
- We provide support in Chinese, English, French, German, Japanese and Spanish

- Extensive multi-media technical resources to help you
- We investigate all quality concerns to ensure our products perform to the highest standards

If the product does not perform as described on this datasheet, we will offer a refund or replacement. For full details of the Abpromise, please visit <https://www.abcam.co.jp/abpromise> or contact our technical team.

### **Terms and conditions**

---

- Guarantee only valid for products bought direct from Abcam or one of our authorized distributors