


### Anti-DNA Polymerase beta antibody ab26343

★★★★★ [8 Abreviews](#) [42 References](#) [画像数 5](#)

#### 製品の概要

製品名	Anti-DNA Polymerase beta antibody
製品の詳細	Rabbit polyclonal to DNA Polymerase beta
由来種	Rabbit
アプリケーション	<b>適用あり:</b> WB, ICC/IF, IHC-P
種交差性	<b>交差種:</b> Mouse, Rat, Human <b>交差が予測される動物種:</b> Chicken, Dog, Xenopus laevis 
免疫原	Synthetic peptide corresponding to Human DNA Polymerase beta aa 300 to the C-terminus (C terminal) conjugated to keyhole limpet haemocyanin.
特記事項	<p>The Life Science industry has been in the grips of a reproducibility crisis for a number of years. Abcam is leading the way in addressing this with our range of recombinant monoclonal antibodies and knockout edited cell lines for gold-standard validation. Please check that this product meets your needs before purchasing.</p> <p>If you have any questions, special requirements or concerns, please send us an inquiry and/or contact our Support team ahead of purchase. Recommended alternatives for this product can be found below, along with publications, customer reviews and Q&amp;As</p>

#### 製品の特性

製品の状態	Liquid
保存方法	Shipped at 4°C. Store at +4°C short term (1-2 weeks). Upon delivery aliquot. Store at -20°C or -80°C. Avoid freeze / thaw cycle.
バッファー	pH: 7.40 Preservative: 0.02% Sodium azide Constituent: PBS  Batches of this product that have a concentration < 1mg/ml may have BSA added as a stabilising agent. If you would like information about the formulation of a specific lot, please contact our scientific support team who will be happy to help.
精製度	Immunogen affinity purified
ポリ/モノ	ポリクローナル
アイソタイプ	IgG

## アプリケーション

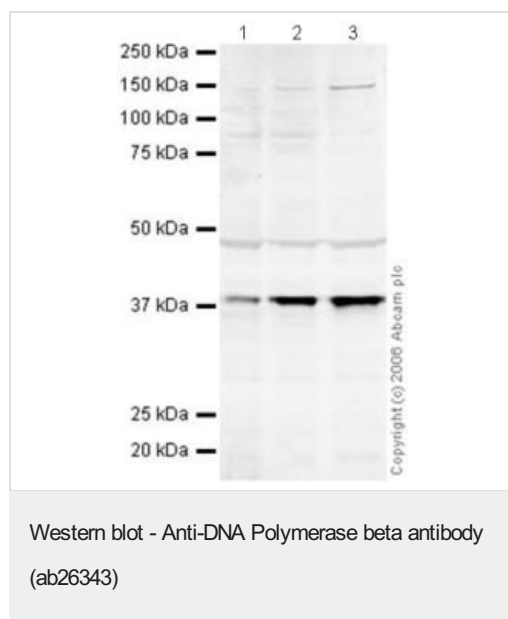
**The Abpromise guarantee**      **Abpromise保証は、次のテスト済みアプリケーションにおけるab26343の使用に適用されます**  
アプリケーションノートには、推奨の開始希釈率がありますが、適切な希釈率につきましてはご検討ください。

アプリケーション	Abreviews	特記事項
WB	★★★★★ (5)	Use a concentration of 0.5 - 2 µg/ml. Detects a band of approximately 38 kDa (predicted molecular weight: 38 kDa).
ICC/IF		Use a concentration of 1 µg/ml.
IHC-P	★★★★★ (1)	1/150. Perform heat mediated antigen retrieval before commencing with IHC staining protocol.

## ターゲット情報

機能	Repair polymerase. Conducts "gap-filling" DNA synthesis in a stepwise distributive fashion rather than in a processive fashion as for other DNA polymerases. Has a 5'-deoxyribose-5-phosphate lyase (dRP lyase) activity.
配列類似性	Belongs to the DNA polymerase type-X family.
ドメイン	Residues 239-252 form a flexible loop which appears to affect the polymerase fidelity.
翻訳後修飾	Methylation by PRMT6 stimulates the polymerase activity by enhancing DNA binding and processivity.
細胞内局在	Nucleus, Cytoplasm

## 画像



**All lanes** : Anti-DNA Polymerase beta antibody (ab26343) at 0.5 µg/ml

**Lane 1** : HeLa (Human epithelial carcinoma cell line) Whole Cell Lysate

**Lane 2** : Jurkat whole cell lysate ([ab7899](#))

**Lane 3** : A-431 whole cell lysate ([ab7909](#))

Lysates/proteins at 20 µg per lane.

### Secondary

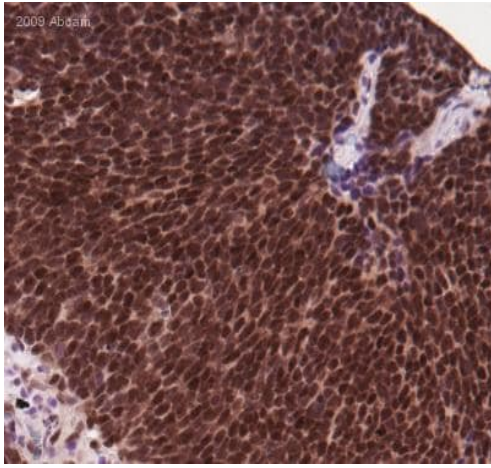
**All lanes** : Goat polyclonal to Rabbit IgG (Alexa Fluor® 680) at 1/10000 dilution

Performed under reducing conditions.

**Predicted band size:** 38 kDa

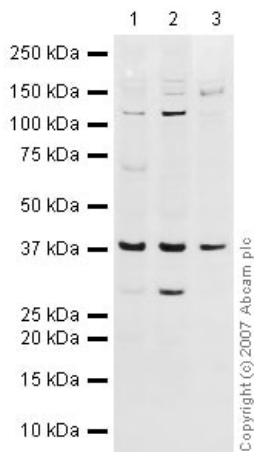
**Observed band size:** 38 kDa

**Additional bands at:** 150 kDa (possible cross reactivity), 48 kDa (possible cross reactivity), 90 kDa (possible cross reactivity)



Immunohistochemistry (Formalin/PFA-fixed paraffin-embedded sections) - Anti-DNA Polymerase beta antibody (ab26343)

Formaldehyde-fixed human small cell lung cancer tissue stained for DNA Polymerase beta using ab26343 at 1/200 dilution in immunohistochemical analysis.



Western blot - Anti-DNA Polymerase beta antibody (ab26343)

**All lanes :** Anti-DNA Polymerase beta antibody (ab26343) at 1 µg/ml

**Lane 1 :** NIH/3T3 whole cell lysate ([ab7179](#))

**Lane 2 :** MEF1 (Mouse embryonic fibroblast cell line) Whole Cell Lysate

**Lane 3 :** PC12 (Rat adrenal pheochromocytoma cell line) Whole Cell Lysate

Lysates/proteins at 10 µg per lane.

### Secondary

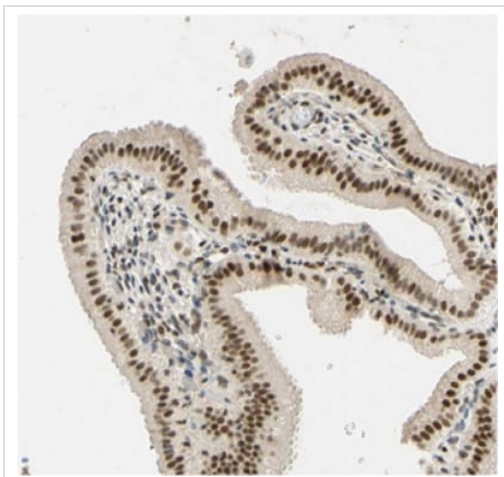
**All lanes :** IRDye 680 Conjugated Goat Anti-Rabbit IgG (H+L) at 1/10000 dilution

Performed under reducing conditions.

**Predicted band size:** 38 kDa

**Observed band size:** 38 kDa

**Additional bands at:** 120 kDa (possible cross reactivity), 30 kDa (possible cross reactivity)



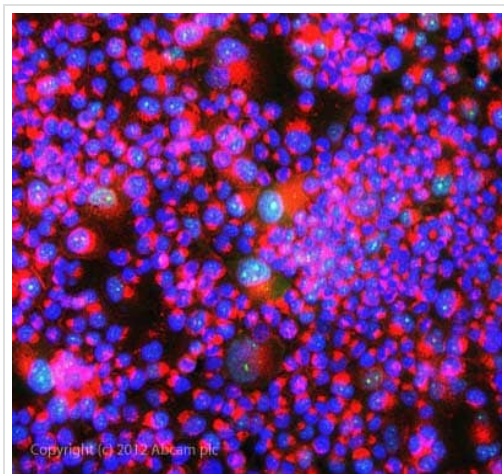
Immunohistochemistry (Formalin/PFA-fixed paraffin-embedded sections) - Anti-DNA Polymerase beta antibody (ab26343)

Image courtesy of Human Protein Atlas

Image courtesy of **Human Protein Atlas** ab26343 staining DNA polymerase beta in Human gall bladder, showing a strong nuclear staining pattern in the columnar epithelial cells in contrast with the cells in the lamina propria. Paraffin embedded human gall bladder tissue was incubated with ab26343 (1/150 dilution) for 30 mins at room temperature. Antigen retrieval was performed by heat induction in citrate buffer pH 6.

ab26343 was tested in a tissue microarray (TMA) containing a wide range of normal and cancer tissues as well as a cell microarray consisting of a range of commonly used, well characterised human cell lines. Further results for this antibody can be found at

[www.proteinatlas.org](http://www.proteinatlas.org)



Immunocytochemistry/ Immunofluorescence - Anti-DNA Polymerase beta antibody (ab26343)

ICC/IF image of ab26343 stained T47D cells. The cells were 100% methanol fixed (5 min) and then incubated in 1%BSA / 10% normal goat serum / 0.3M glycine in 0.1% PBS-Tween for 1h to permeabilise the cells and block non-specific protein-protein interactions. The cells were then incubated with the antibody ab26343 at 1µg/ml overnight at +4°C. The secondary antibody (green) was DyLight® 488 goat anti- rabbit (**ab96899**) IgG (H+L) used at a 1/1000 dilution for 1h. Alexa Fluor® 594 WGA was used to label plasma membranes (red) at a 1/200 dilution for 1h. DAPI was used to stain the cell nuclei (blue) at a concentration of 1.43µM.

**Please note:** All products are "FOR RESEARCH USE ONLY. NOT FOR USE IN DIAGNOSTIC PROCEDURES"

### Our Abpromise to you: Quality guaranteed and expert technical support

- Replacement or refund for products not performing as stated on the datasheet
- Valid for 12 months from date of delivery
- Response to your inquiry within 24 hours
- We provide support in Chinese, English, French, German, Japanese and Spanish
- Extensive multi-media technical resources to help you
- We investigate all quality concerns to ensure our products perform to the highest standards

If the product does not perform as described on this datasheet, we will offer a refund or replacement. For full details of the Abpromise, please visit <https://www.abcam.co.jp/abpromise> or contact our technical team.

## **Terms and conditions**

---

- Guarantee only valid for products bought direct from Abcam or one of our authorized distributors