



Anti-DMT1 antibody [4C6] ab55735

★★★★★ [2 Abreviews](#) [29 References](#) [画像数 4](#)

製品の概要

製品名	Anti-DMT1 antibody [4C6]
製品の詳細	Mouse monoclonal [4C6] to DMT1
由来種	Mouse
アプリケーション	適用あり: Flow Cyt, IHC-P, IHC-Fr, WB
種交差性	交差種: Mouse, Human, Recombinant fragment
免疫原	Recombinant fragment corresponding to Human DMT1 aa 1-65. Sequence: MVLGPEQKMSDDSVSGDHGESASLGNINPAYSNPSLSQSPGD SEEFATY FNEKISIPEEEEYSCF Database link: P49281  Run BLAST with  Run BLAST with
ポジティブ・コントロール	IHC-P: Human endometrium cance Flow cyt: SH-SY5Y cells
特記事項	<p>This product was changed from ascites to tissue culture supernatant on 17/04/2019. Please note that the dilutions may need to be adjusted accordingly. If you have any questions, please do not hesitate to contact our scientific support team.</p> <p>The Life Science industry has been in the grips of a reproducibility crisis for a number of years. Abcam is leading the way in addressing this with our range of recombinant monoclonal antibodies and knockout edited cell lines for gold-standard validation. Please check that this product meets your needs before purchasing.</p> <p>If you have any questions, special requirements or concerns, please send us an inquiry and/or contact our Support team ahead of purchase. Recommended alternatives for this product can be found below, along with publications, customer reviews and Q&As</p>

製品の特性

製品の状態	Liquid
保存方法	Shipped at 4°C. Upon delivery aliquot and store at -20°C or -80°C. Avoid repeated freeze / thaw cycles.
バッファー	pH: 7.40 Constituents: 8% Sodium chloride, 0.2% Monobasic dihydrogen potassium phosphate, 0.2%

	Potassium chloride, 0.6% Dibasic monohydrogen sodium phosphate, 91% Water
精製度	Tissue culture supernatant
ポリ/モノ	モノクローナル
クローン名	4C6
アイソタイプ	IgG2a
軽鎖の種類	kappa

アプリケーション

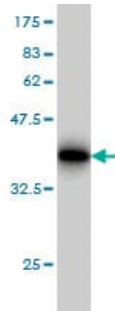
The Abpromise guarantee Abpromise保証は、次のテスト済みアプリケーションにおけるab55735の使用に適用されます
アプリケーションノートには、推奨の開始希釈率がありますが、適切な希釈率につきましてはご検討ください。

アプリケーション	Abreviews	特記事項
Flow Cyt		Use at an assay dependent concentration. ab170191 - Mouse monoclonal IgG2a, is suitable for use as an isotype control with this antibody.
IHC-P		Use at an assay dependent concentration.
IHC-Fr	★★★★★ (1)	Use at an assay dependent concentration.
WB		Use at an assay dependent concentration. Predicted molecular weight: 62 kDa.

ターゲット情報

機能	Important in metal transport, in particular iron. Can also transport manganese, cobalt, cadmium, nickel, vanadium and lead. Involved in apical iron uptake into duodenal enterocytes. Involved in iron transport from acidified endosomes into the cytoplasm of erythroid precursor cells. May play an important role in hepatic iron accumulation and tissue iron distribution.
組織特異性	Ubiquitously expressed. Isoform 1 is highly expressed in brain. Isoform 2 is highly expressed in spleen, thymus and pancreas. Isoform 3 and isoform 4 are abundantly expressed in duodenum and kidney.
関連疾患	Defects in SLC11A2 are a cause of hypochromic microcytic anemia (HCMA) [MIM:206100]. The disease is characterized by an abnormal hemoglobin content in the erythrocytes which are reduced in size. It may be hereditary or acquired. Mutations in SLC11A2 are associated with progressive liver iron overload and normal to moderately elevated serum ferritin levels.
配列類似性	Belongs to the NRAMP family.
翻訳後修飾	Ubiquitinated by WWP2.
細胞内局在	Endosome membrane.

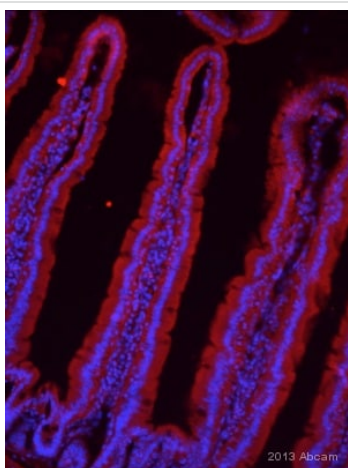
画像



Western blot - Anti-DMT1 antibody [4C6] (ab55735)

Western blot against tagged recombinant protein fragment (immunogen peptide) using ab55735 DMT1 antibody at 1ug/ml.

This image was generated using the ascites version of the product.

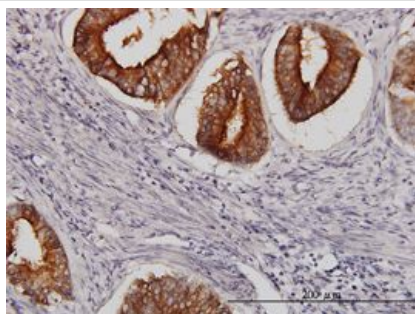


Immunohistochemistry (Frozen sections) - Anti-DMT1 antibody [4C6] (ab55735)

This image is courtesy of an abreview submitted by Dr. Ruma Raha-Chowdhury, Cambridge University, United Kingdom.

IHC-Fr image of DMT1 staining on mouse duodenum using ab55735 (1:1000). The sections were fixed with paraformaldehyde and permeabilized using 0.1% TritonX in 0.1% PBS. The slides were blocked using 10 % donkey serum for 1 hour at 24°C. ab55735 was diluted 1:1000 using 0.1% TritonX with 0.1x PBS-10% Donkeys and incubated with the slides at 4°C for 24 hours. The secondary antibody used was donkey polyclonal against mouse IgG conjugated to Alexa Fluor 568 (1:1000)

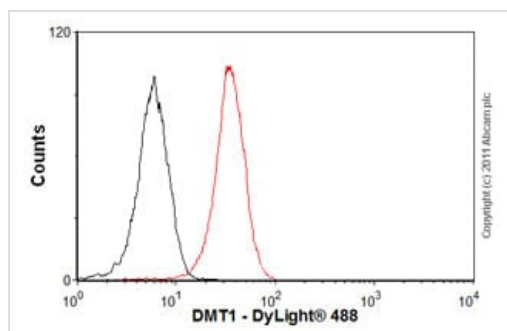
This image was generated using the ascites version of the product.



Immunohistochemistry (Formalin/PFA-fixed paraffin-embedded sections) - Anti-DMT1 antibody [4C6] (ab55735)

DMT1 antibody (ab55735) used in immunohistochemistry at 3ug/ml on formalin fixed and paraffin embedded human endometrium cancer.

This image was generated using the ascites version of the product.



Flow Cytometry - Anti-DMT1 antibody [4C6]
(ab55735)

Overlay histogram showing SH-SY5Y cells stained with ab55735 (red line). The cells were fixed with 4% paraformaldehyde (10 min) and then permeabilized with 0.1% PBS-Tween for 20 min. The cells were then incubated in 1x PBS / 10% normal goat serum / 0.3M glycine to block non-specific protein-protein interactions followed by the antibody (ab55735, 1 µg/1x10⁶ cells) for 30 min at 22°C. The secondary antibody used was DyLight® 488 goat anti-mouse IgG (H+L) ([ab96879](#)) at 1/500 dilution for 30 min at 22°C. Isotype control antibody (black line) was mouse IgG2a [ICIGG2A] ([ab91361](#), 1 µg/1x10⁶ cells) used under the same conditions. Acquisition of >5,000 events was performed. This antibody gave a positive signal in SH-SY5Y cells fixed with 80% methanol/permeabilized in 0.1% PBS-Tween used under the same conditions.

This image was generated using the ascites version of the product.

Please note: All products are "FOR RESEARCH USE ONLY. NOT FOR USE IN DIAGNOSTIC PROCEDURES"

Our Abpromise to you: Quality guaranteed and expert technical support

- Replacement or refund for products not performing as stated on the datasheet
- Valid for 12 months from date of delivery
- Response to your inquiry within 24 hours
- We provide support in Chinese, English, French, German, Japanese and Spanish
- Extensive multi-media technical resources to help you
- We investigate all quality concerns to ensure our products perform to the highest standards

If the product does not perform as described on this datasheet, we will offer a refund or replacement. For full details of the Abpromise, please visit <https://www.abcam.co.jp/abpromise> or contact our technical team.

Terms and conditions

- Guarantee only valid for products bought direct from Abcam or one of our authorized distributors