

### Anti-DMC1 antibody ab97313

1 Abbreviations 両倍率 1

医薬用外劇物

#### 製品の概要

製品名	Anti-DMC1 antibody
製品の詳細	Rabbit polyclonal to DMC1
由来種	Rabbit
アプリケーション	適用あり: WB
種交差性	交差種: Human 交差が予測される動物種: Mouse, Rat, Zebrafish 非交差種: Arabidopsis thaliana
免疫原	Recombinant fragment containing a sequence corresponding to a region within amino acids 168-316 of Human DMC1 (NP_008999).
ポジティブ・コントロール	Raji whole cell lysate; 293T, A431, H1299, HeLa, HepG2 and Molt-4 cell lysates
特記事項	<p>The Life Science industry has been in the grips of a reproducibility crisis for a number of years. Abcam is leading the way in addressing this with our range of recombinant monoclonal antibodies and knockout edited cell lines for gold-standard validation. Please check that this product meets your needs before purchasing.</p> <p>If you have any questions, special requirements or concerns, please send us an inquiry and/or contact our Support team ahead of purchase. Recommended alternatives for this product can be found below, along with publications, customer reviews and Q&amp;As</p>

#### 製品の特性

製品の状態	Liquid
保存方法	Shipped at 4°C. Upon delivery aliquot. Store at -20°C or -80°C. Avoid freeze / thaw cycle.
バッファー	pH: 7.00 Preservative: 0.01% Thimerosal (merthiolate) Constituents: 59.99% PBS, 40% Glycerol (glycerin, glycerine)
精製度	Immunogen affinity purified
ポリ/モノ	ポリクローナル
アイソタイプ	IgG

## アプリケーション

### The Abpromise guarantee

**Abpromise保証は、**次のテスト済みアプリケーションにおけるab97313の使用に適用されます

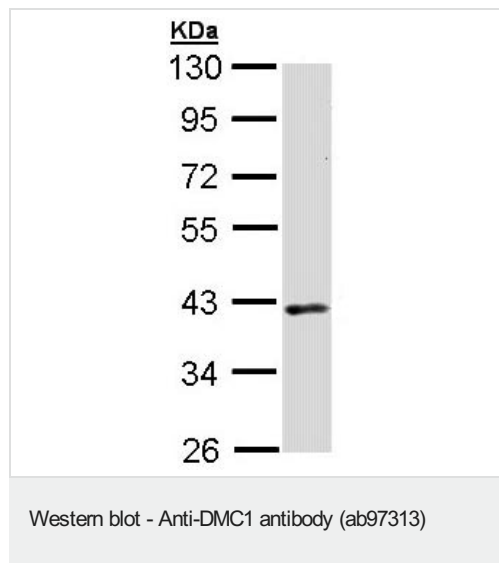
アプリケーションノートには、推奨の開始希釈率がありますが、適切な希釈率につきましてはご確認ください。

アプリケーション	Abreviews	特記事項
WB		1/500 - 1/3000. Predicted molecular weight: 38 kDa.

## ターゲット情報

機能	May participate in meiotic recombination, specifically in homologous strand assimilation, which is required for the resolution of meiotic double-strand breaks.
配列類似性	Belongs to the RecA family. DMC1 subfamily. Contains 1 HhH domain.
細胞内局在	Nucleus. Chromosome.

## 画像



Anti-DMC1 antibody (ab97313) at 1/1000 dilution + Raji whole cell lysate at 30 µg

**Predicted band size:** 38 kDa

10% SDS-PAGE

**Please note:** All products are "FOR RESEARCH USE ONLY. NOT FOR USE IN DIAGNOSTIC PROCEDURES"

## Our Abpromise to you: Quality guaranteed and expert technical support

- Replacement or refund for products not performing as stated on the datasheet
- Valid for 12 months from date of delivery
- Response to your inquiry within 24 hours
- We provide support in Chinese, English, French, German, Japanese and Spanish
- Extensive multi-media technical resources to help you
- We investigate all quality concerns to ensure our products perform to the highest standards

If the product does not perform as described on this datasheet, we will offer a refund or replacement. For full details of the Abpromise, please visit <https://www.abcam.co.jp/abpromise> or contact our technical team.

#### **Terms and conditions**

---

- Guarantee only valid for products bought direct from Abcam or one of our authorized distributors