

Anti-Dlx5 antibody ab64827

★★★★☆ [4 Abreviews](#) [4 References](#) [画像数 2](#)

製品の概要

製品名	Anti-Dlx5 antibody
製品の詳細	Rabbit polyclonal to Dlx5
由来種	Rabbit
アプリケーション	適用あり: IHC-P, WB
種交差性	交差種: Human
免疫原	Synthetic peptide derived from an internal sequence of human Dlx5.
特記事項	<p>The Life Science industry has been in the grips of a reproducibility crisis for a number of years. Abcam is leading the way in addressing this with our range of recombinant monoclonal antibodies and knockout edited cell lines for gold-standard validation. Please check that this product meets your needs before purchasing.</p> <p>If you have any questions, special requirements or concerns, please send us an inquiry and/or contact our Support team ahead of purchase. Recommended alternatives for this product can be found below, along with publications, customer reviews and Q&As</p>

製品の特性

製品の状態	Liquid
保存方法	Shipped at 4°C. Store at -20°C. Stable for 12 months at -20°C.
バッファー	pH: 7.40 Preservative: 0.02% Sodium azide Constituents: PBS, 50% Glycerol, 0.87% Sodium chloride
精製度	Without Mg ²⁺ and Ca ²⁺ Immunogen affinity purified
特記事項(精製)	ab64827 was affinity purified from rabbit antiserum by affinity chromatography using epitope specific immunogen.
ポリ/モノ	ポリクローナル
アイソタイプ	IgG

アプリケーション

The Abpromise guarantee

Abpromise保証は、次のテスト済みアプリケーションにおけるab64827の使用に適用されます

アプリケーションノートには、推奨の開始希釈率がありますが、適切な希釈率につきましてはご検討ください。

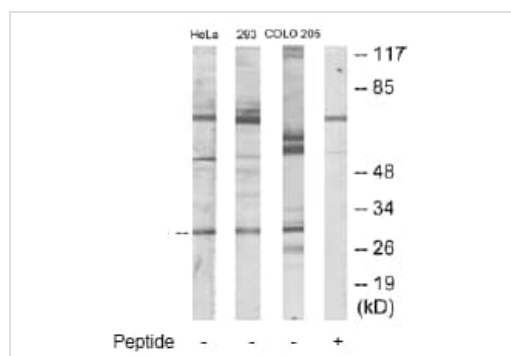
アプリケーション	Abreviews	特記事項
IHC-P		1/50 - 1/100. Perform heat mediated antigen retrieval via the pressure cooker method before commencing with IHC staining protocol.
WB		1/500 - 1/1000. Detects a band of approximately 32 kDa (predicted molecular weight: 32 kDa).

ターゲット情報

細胞内局在

Nuclear

画像



Western blot - Anti-Dlx5 antibody (ab64827)

All lanes : Anti-Dlx5 antibody (ab64827) at 1/500 dilution

Lane 1 : HeLa cell extract at 30 µg

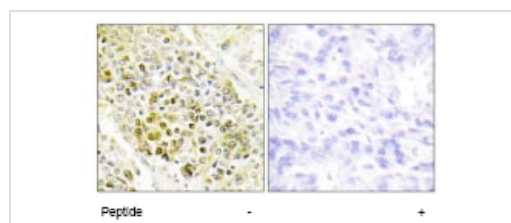
Lane 2 : 293 cell extract at 30 µg

Lane 3 : COLO205 cell extract at 30 µg

Lane 4 : COLO205 cell extract at 30 µg
plus immunising peptide at 10 µg

Predicted band size: 32 kDa

Observed band size: 32 kDa



Immunohistochemistry (Formalin/PFA-fixed paraffin-embedded sections) - Anti-Dlx5 antibody (ab64827)

ab64827, at 1/50 dilution, staining Dlx5 in paraffin embedded human lung carcinoma tissue by Immunohistochemistry in the absence or presence of the immunising peptide.

Please note: All products are "FOR RESEARCH USE ONLY. NOT FOR USE IN DIAGNOSTIC PROCEDURES"

Our Abpromise to you: Quality guaranteed and expert technical support

- Replacement or refund for products not performing as stated on the datasheet

- Valid for 12 months from date of delivery
- Response to your inquiry within 24 hours

- We provide support in Chinese, English, French, German, Japanese and Spanish
- Extensive multi-media technical resources to help you
- We investigate all quality concerns to ensure our products perform to the highest standards

If the product does not perform as described on this datasheet, we will offer a refund or replacement. For full details of the Abpromise, please visit <https://www.abcam.co.jp/abpromise> or contact our technical team.

Terms and conditions

- Guarantee only valid for products bought direct from Abcam or one of our authorized distributors