


Anti-DLK-1 antibody ab21682

★★★★☆ **5 Abreviews** **31 References** 画像数 1

製品の概要

製品名	Anti-DLK-1 antibody
製品の詳細	Rabbit polyclonal to DLK-1
由来種	Rabbit
アプリケーション	適用あり: WB
種交差性	交差種: Mouse 交差が予測される動物種: Rat, Cow, Human 
免疫原	Synthetic peptide corresponding to Human DLK-1 aa 350 to the C-terminus (C terminal) conjugated to keyhole limpet haemocyanin. (Peptide available as ab23442)
ポジティブ・コントロール	This antibody gave a positive signal in E18.5 Mouse Muscle Wild Type Tissue Lysate.
特記事項	<p>The Life Science industry has been in the grips of a reproducibility crisis for a number of years. Abcam is leading the way in addressing this with our range of recombinant monoclonal antibodies and knockout edited cell lines for gold-standard validation. Please check that this product meets your needs before purchasing.</p> <p>If you have any questions, special requirements or concerns, please send us an inquiry and/or contact our Support team ahead of purchase. Recommended alternatives for this product can be found below, along with publications, customer reviews and Q&As</p>

製品の特性

製品の状態	Liquid
保存方法	Shipped at 4°C. Store at +4°C short term (1-2 weeks). Upon delivery aliquot. Store at -20°C or -80°C. Avoid freeze / thaw cycle.
バッファー	pH: 7.40 Preservative: 0.02% Sodium azide Constituent: PBS
精製度	Batches of this product that have a concentration < 1mg/ml may have BSA added as a stabilising agent. If you would like information about the formulation of a specific lot, please contact our scientific support team who will be happy to help. Immunogen affinity purified

ポリ/モノ	ポリクローナル
アイソタイプ	IgG

アプリケーション

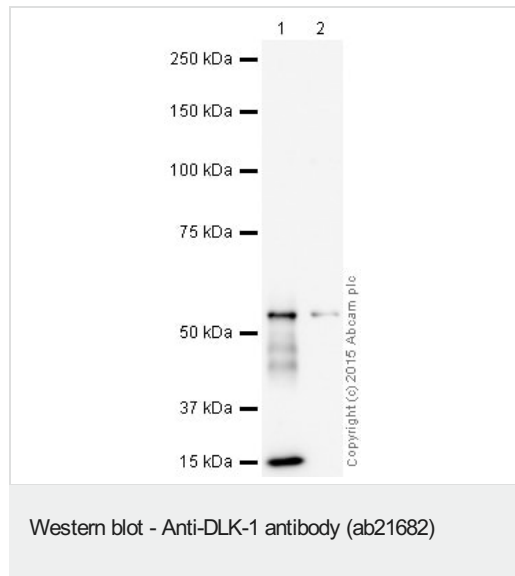
The Abpromise guarantee **Abpromise保証は、**次のテスト済みアプリケーションにおけるab21682の使用に適用されます
 アプリケーションノートには、推奨の開始希釈率がありますが、適切な希釈率につきましてはご確認ください。

アプリケーション	Abreviews	特記事項
WB		1/2000. Detects a band of approximately 45,48 kDa (predicted molecular weight: 41 kDa). Abcam recommends using milk as the blocking agent. Abcam welcomes customer feedback and would appreciate any comments regarding this product.

ターゲット情報

機能	May have a role in neuroendocrine differentiation.
組織特異性	Found within the stromal cells in close contact to the vascular structure of placental villi, yolk sac, fetal liver, adrenal cortex and pancreas and in the beta cells of the islets of Langerhans in the adult pancreas. Found also in some forms of neuroendocrine lung tumor tissue.
配列類似性	Contains 6 EGF-like domains.
翻訳後修飾	N- and O-glycosylated.
細胞内局在	Membrane.

画像



All lanes : Anti-DLK-1 antibody (ab21682) at 1/2000 dilution ((5% Milk blocking))

Lane 1 : E18.5 Mouse Muscle Wild Type Tissue Lysate
Lane 2 : E18.5 Mouse Muscle DLK1 Knockout Tissue Lysate

Lysates/proteins at 5 µg per lane.

Secondary
All lanes : Goat polyclonal to Rabbit IgG - H&L - Pre-Adsorbed (HRP) at 1/5000 dilution

Developed using the ECL technique.

Performed under reducing conditions.

Predicted band size: 41 kDa

Observed band size: 45,48 kDa

Additional bands at: 15 kDa (possible cleavage fragment), 55 kDa. We are unsure as to the identity of these extra bands.

Exposure time: 3 minutes

This blot was produced using an 8% Tris-glycine gel under the Tris-glycine buffer system. The gel was run at 120V for 1 hour 15 minutes before being transferred onto a Nitrocellulose membrane at 30V for 70 minutes. The membrane was then blocked for an hour using 5% Milk before being incubated with ab21682 overnight at 4°C. Antibody binding was detected using an anti-rabbit antibody conjugated to HRP, and visualised using ECL development solution **ab133406**.

Abcam recommends using milk as the blocking agent. Abcam welcomes customer feedback and would appreciate any comments regarding this product and the data presented above.

Please note: All products are "FOR RESEARCH USE ONLY. NOT FOR USE IN DIAGNOSTIC PROCEDURES"

Our Abpromise to you: Quality guaranteed and expert technical support

- Replacement or refund for products not performing as stated on the datasheet
- Valid for 12 months from date of delivery
- Response to your inquiry within 24 hours
- We provide support in Chinese, English, French, German, Japanese and Spanish
- Extensive multi-media technical resources to help you
- We investigate all quality concerns to ensure our products perform to the highest standards

If the product does not perform as described on this datasheet, we will offer a refund or replacement. For full details of the Abpromise, please visit <https://www.abcam.co.jp/abpromise> or contact our technical team.

Terms and conditions

- Guarantee only valid for products bought direct from Abcam or one of our authorized distributors