

Anti-DLK-1 antibody [3A10] ab119930

★★★★★ [2 Abreviews](#) [11 References](#) [画像数 4](#)

製品の概要

製品名	Anti-DLK-1 antibody [3A10]
製品の詳細	Mouse monoclonal [3A10] to DLK-1
由来種	Mouse
アプリケーション	適用あり: WB, ELISA, Flow Cyt, ICC/IF
種交差性	交差種: Mouse, Human, Recombinant fragment
免疫原	Recombinant fragment corresponding to Human DLK-1 aa 174-349.
ポジティブ・コントロール	Recombinant DLK-1 protein; U251 cells; NIH3T3 cells
特記事項	<p>The Life Science industry has been in the grips of a reproducibility crisis for a number of years. Abcam is leading the way in addressing this with our range of recombinant monoclonal antibodies and knockout edited cell lines for gold-standard validation. Please check that this product meets your needs before purchasing.</p> <p>If you have any questions, special requirements or concerns, please send us an inquiry and/or contact our Support team ahead of purchase. Recommended alternatives for this product can be found below, along with publications, customer reviews and Q&As</p>

製品の特性

製品の状態	Liquid
保存方法	Shipped at 4°C. Store at +4°C short term (1-2 weeks). Store at -20°C long term.
バッファー	Preservative: 0.05% Sodium azide Constituent: PBS
精製度	Protein G purified
特記事項(精製)	Purified from tissue culture supernatant.
ポリ/モノ	モノクローナル
クローン名	3A10
アイソタイプ	IgG1
軽鎖の種類	kappa

アプリケーション

The Abpromise guarantee

Abpromise保証は、次のテスト済みアプリケーションにおけるab119930の使用に適用されます

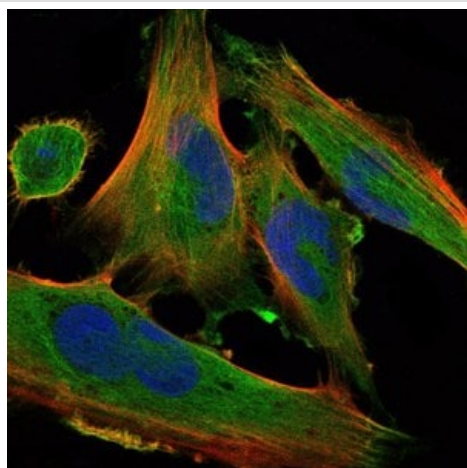
アプリケーションノートには、推奨の開始希釈率がありますが、適切な希釈率につきましてはご検討ください。

アプリケーション	Abreviews	特記事項
WB		1/500 - 1/2000. Predicted molecular weight: 41 kDa.
ELISA		1/10000.
Flow Cyt		1/200 - 1/400. ab170190 - Mouse monoclonal IgG1, is suitable for use as an isotype control with this antibody.
ICC/IF	★★★★★ (2)	1/200 - 1/1000.

ターゲット情報

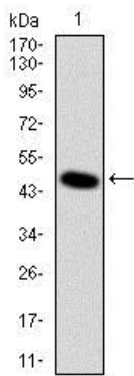
機能	May have a role in neuroendocrine differentiation.
組織特異性	Found within the stromal cells in close contact to the vascular structure of placental villi, yolk sac, fetal liver, adrenal cortex and pancreas and in the beta cells of the islets of Langerhans in the adult pancreas. Found also in some forms of neuroendocrine lung tumor tissue.
配列類似性	Contains 6 EGF-like domains.
翻訳後修飾	N- and O-glycosylated.
細胞内局在	Membrane.

画像



Immunofluorescence analysis of U251 cells using ab119930 at 1/200 dilution (green). Blue: DRAQ5 fluorescent DNA dye. Red: Actin filaments have been labeled with Alexa Fluor-555 phalloidin.

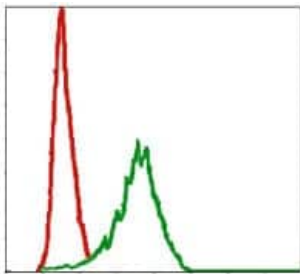
Immunocytochemistry/ Immunofluorescence - Anti-DLK-1 antibody [3A10] (ab119930)



Anti-DLK-1 antibody [3A10] (ab119930) at 1/500 dilution +
Recombinant DLK-1 protein

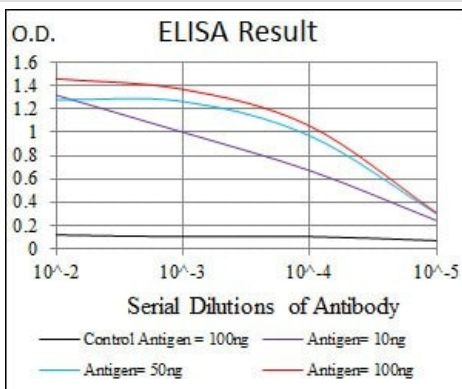
Predicted band size: 41 kDa

Western blot - Anti-DLK-1 antibody [3A10]
(ab119930)



Flow cytometric analysis of NIH3T3 cells using ab119930 at 1/200
dilution (green) and negative control (red).

Flow Cytometry - Anti-DLK-1 antibody [3A10]
(ab119930)



ELISA using ab119930.

ELISA - Anti-DLK-1 antibody [3A10] (ab119930)

Please note: All products are "FOR RESEARCH USE ONLY. NOT FOR USE IN DIAGNOSTIC PROCEDURES"

Our Abpromise to you: Quality guaranteed and expert technical support

- Replacement or refund for products not performing as stated on the datasheet

- Valid for 12 months from date of delivery
- Response to your inquiry within 24 hours

- We provide support in Chinese, English, French, German, Japanese and Spanish
- Extensive multi-media technical resources to help you
- We investigate all quality concerns to ensure our products perform to the highest standards

If the product does not perform as described on this datasheet, we will offer a refund or replacement. For full details of the Abpromise, please visit <https://www.abcam.co.jp/abpromise> or contact our technical team.

Terms and conditions

- Guarantee only valid for products bought direct from Abcam or one of our authorized distributors