

# Anti-DLGAP2 antibody ab106520

**1 References**   [画像数 3](#)

### 製品の概要

製品名	Anti-DLGAP2 antibody
製品の詳細	Rabbit polyclonal to DLGAP2
由来種	Rabbit
特異性	ab106520 will not cross-react with other SAPAP proteins.
アプリケーション	<b>適用あり:</b> IHC-P, ICC/IF, WB
種交差性	<b>交差種:</b> Human
免疫原	A 16 amino acid synthetic peptide from near the center of Human DLGAP2 (UniProt Q9P1A6).
特記事項	<p>The Life Science industry has been in the grips of a reproducibility crisis for a number of years. Abcam is leading the way in addressing this with our range of recombinant monoclonal antibodies and knockout edited cell lines for gold-standard validation. Please check that this product meets your needs before purchasing.</p> <p>If you have any questions, special requirements or concerns, please send us an inquiry and/or contact our Support team ahead of purchase. Recommended alternatives for this product can be found below, along with publications, customer reviews and Q&amp;As</p>

### 製品の特性

製品の状態	Liquid
保存方法	Shipped at 4°C. Store at 4°C (stable for up to 12 months).
バッファー	pH: 7.2 Preservative: 0.02% Sodium azide Constituent: PBS
精製度	Immunogen affinity purified
ポリ/モノ	ポリクローナル
アイソタイプ	IgG

### アプリケーション

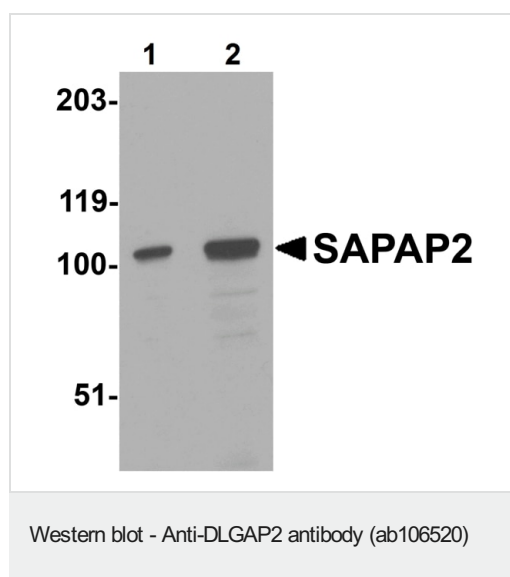
**The Abpromise guarantee**   **Abpromise保証は、** 次のテスト済みアプリケーションにおけるab106520の使用に適用されます  
アプリケーションノートには、推奨の開始希釈率がありますが、適切な希釈率につきましてはご検討ください。

アプリケーション	Abreviews	特記事項
IHC-P		Use a concentration of 5 µg/ml.
ICC/IF		Use a concentration of 20 µg/ml.
WB		Use a concentration of 0.5 - 1 µg/ml. Predicted molecular weight: 118 kDa.

## ターゲット情報

機能	May play a role in the molecular organization of synapses and neuronal cell signaling. Could be an adapter protein linking ion channel to the subsynaptic cytoskeleton. May induce enrichment of PSD-95/SAP90 at the plasma membrane.
組織特異性	Expressed in brain and kidney.
配列類似性	Belongs to the SAPAP family.
細胞内局在	Cell membrane. Cell junction > synapse > postsynaptic cell membrane > postsynaptic density. Cell junction > synapse. Postsynaptic density of neuronal cells.

## 画像

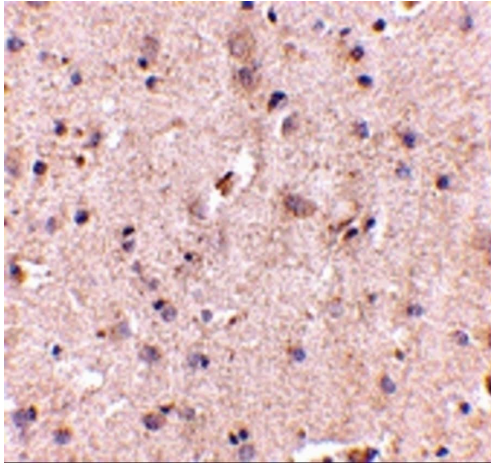


**Lane 1** : Anti-DLGAP2 antibody (ab106520) at 0.5 µg/ml

**Lane 2** : Anti-DLGAP2 antibody (ab106520) at 1 µg/ml

**All lanes** : Raji (human Burkitt's lymphoma cell line) cell lysate

**Predicted band size:** 118 kDa



Immunohistochemistry of SAPAP2 in human brain with SAPAP2 antibody ab106520 at 5 µg/mL.

Immunohistochemistry (Formalin/PFA-fixed paraffin-embedded sections) - Anti-DLGAP2 antibody (ab106520)

Immunocytochemistry/ Immunofluorescence - Anti-DLGAP2 antibody (ab106520)

Immunofluorescence of SAPAP2 in Human Brain cells using ab106520 at 20 ug/ml.

**Please note:** All products are "FOR RESEARCH USE ONLY. NOT FOR USE IN DIAGNOSTIC PROCEDURES"

### Our Abpromise to you: Quality guaranteed and expert technical support

- Replacement or refund for products not performing as stated on the datasheet
- Valid for 12 months from date of delivery
- Response to your inquiry within 24 hours
- We provide support in Chinese, English, French, German, Japanese and Spanish
- Extensive multi-media technical resources to help you
- We investigate all quality concerns to ensure our products perform to the highest standards

If the product does not perform as described on this datasheet, we will offer a refund or replacement. For full details of the Abpromise, please visit <https://www.abcam.co.jp/abpromise> or contact our technical team.

## Terms and conditions

---

- Guarantee only valid for products bought direct from Abcam or one of our authorized distributors