


Anti-DLG5 antibody ab86783

1 [References](#) **2** [画像数](#)

製品の概要

製品名	Anti-DLG5 antibody
製品の詳細	Rabbit polyclonal to DLG5
由来種	Rabbit
アプリケーション	適用あり: WB, IP
種交差性	交差種: Human 交差が予測される動物種: Horse, Guinea pig, Cow, Dog, Pig, Chimpanzee, Rhesus monkey, Gorilla 
免疫原	Synthetic peptide corresponding to a region between residues 1325 and 1375 of human DLG5 (NP_004738.3).
ポジティブ・コントロール	HeLa whole cell lysate
特記事項	<p>The Life Science industry has been in the grips of a reproducibility crisis for a number of years. Abcam is leading the way in addressing this with our range of recombinant monoclonal antibodies and knockout edited cell lines for gold-standard validation. Please check that this product meets your needs before purchasing.</p> <p>If you have any questions, special requirements or concerns, please send us an inquiry and/or contact our Support team ahead of purchase. Recommended alternatives for this product can be found below, along with publications, customer reviews and Q&As</p>

製品の特性

製品の状態	Liquid
保存方法	Shipped at 4°C. Upon delivery aliquot and store at -20°C. Avoid freeze / thaw cycles.
バッファー	pH: 7 Preservative: 0.09% Sodium azide Constituent: Tris citrate/phosphate
精製度	Immunogen affinity purified
特記事項 (精製)	ab86783 was affinity purified using an epitope specific to DLG5 immobilized on solid support.
ポリ/モノ	ポリクローナル
アイソタイプ	IgG

アプリケーション

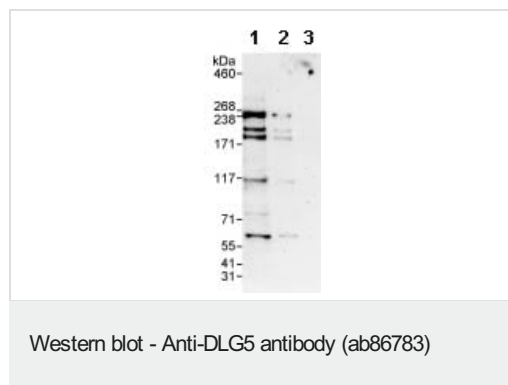
The Abpromise guarantee Abpromise保証は、 次のテスト済みアプリケーションにおけるab86783の使用に適用されます
アプリケーションノートには、推奨の開始希釈率がありますが、適切な希釈率につきましてはご検討ください。

アプリケーション	Abreviews	特記事項
WB		1/2000 - 1/10000. Predicted molecular weight: 214 kDa.
IP		Use at 10 µg/mg of lysate.

ターゲット情報

機能	May play a role at the plasma membrane in the maintenance of the structure of epithelial cells and in the transmission of extracellular signals to the membrane and cytoskeleton.
組織特異性	Highly expressed in the placenta and prostate. Expressed at a lower level in the thyroid, spinal cord, trachea, adrenal gland, skeletal muscle, pancreas, heart, brain, liver and kidney. A short splice product shows more limited expression, being absent from at least the brain.
配列類似性	Belongs to the MAGUK family. Contains 1 CARD domain. Contains 1 guanylate kinase-like domain. Contains 4 PDZ (DHR) domains. Contains 1 SH3 domain.
細胞内局在	Cell junction. Cell membrane. Localized at sites of cell-cell contact.

画像



All lanes : Anti-DLG5 antibody (ab86783) at 0.1 µg/ml

Lane 1 : HeLa whole cell lysate at 50 µg

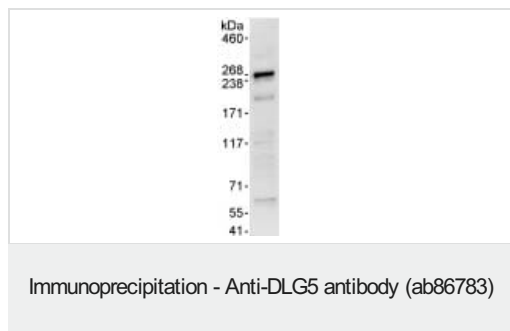
Lane 2 : HeLa whole cell lysate at 15 µg

Lane 3 : HeLa whole cell lysate at 5 µg

Developed using the ECL technique.

Predicted band size: 214 kDa

Exposure time: 3 minutes



Detection of DLG5 by Western Blot of Immunoprecipitate.
ab86783, at 1 µg/ml, staining DLG5 in HeLa whole cell lysate immunoprecipitated using ab86783 at 10 µg/mg lysate (1 mg/IP; 20% of IP loaded/lane).
Detection: Chemiluminescence with an exposure time of 30 seconds.

Please note: All products are "FOR RESEARCH USE ONLY. NOT FOR USE IN DIAGNOSTIC PROCEDURES"

Our Abpromise to you: Quality guaranteed and expert technical support

- Replacement or refund for products not performing as stated on the datasheet
- Valid for 12 months from date of delivery
- Response to your inquiry within 24 hours
- We provide support in Chinese, English, French, German, Japanese and Spanish
- Extensive multi-media technical resources to help you
- We investigate all quality concerns to ensure our products perform to the highest standards

If the product does not perform as described on this datasheet, we will offer a refund or replacement. For full details of the Abpromise, please visit <https://www.abcam.co.jp/abpromise> or contact our technical team.

Terms and conditions

- Guarantee only valid for products bought direct from Abcam or one of our authorized distributors