

Anti-DKK1 antibody ab61034

★★★★★ [5 Abreviews](#) [22 References](#) [画像数 1](#)

製品の概要

製品名	Anti-DKK1 antibody
製品の詳細	Rabbit polyclonal to DKK1
由来種	Rabbit
アプリケーション	適用あり: IHC-Fr, IHC-P
種交差性	交差種: Mouse, Human
免疫原	Synthetic peptide (Human) from the internal domain of DKK1 conjugated to KLH
特記事項	<p>The Life Science industry has been in the grips of a reproducibility crisis for a number of years. Abcam is leading the way in addressing this with our range of recombinant monoclonal antibodies and knockout edited cell lines for gold-standard validation. Please check that this product meets your needs before purchasing.</p> <p>If you have any questions, special requirements or concerns, please send us an inquiry and/or contact our Support team ahead of purchase. Recommended alternatives for this product can be found below, along with publications, customer reviews and Q&As</p>

製品の特性

製品の状態	Liquid
保存方法	Shipped at 4°C. Store at +4°C short term (1-2 weeks). Upon delivery aliquot. Store at -20°C or -80°C. Avoid freeze / thaw cycle.
バッファー	pH: 7.70 Preservative: 0.1% Sodium azide Constituent: PBS
精製度	Immunogen affinity purified
ポリ/モノ	ポリクローナル
アイソタイプ	IgG

アプリケーション

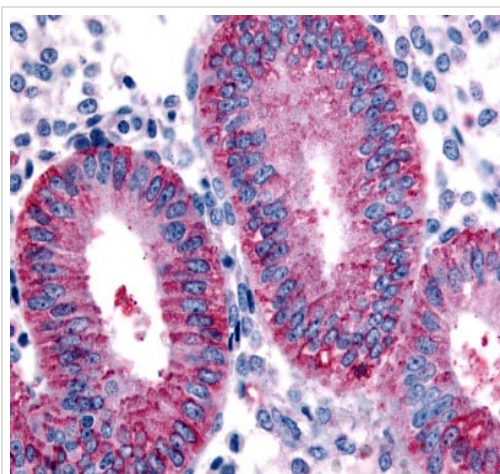
The Abpromise guarantee Abpromise保証は、 次のテスト済みアプリケーションにおけるab61034の使用に適用されます
アプリケーションノートには、推奨の開始希釈率がありますが、適切な希釈率につきましてはご検討ください。

アプリケーション	Abreviews	特記事項
IHC-Fr	★★★★★ (2)	Use at an assay dependent concentration.
IHC-P	★★★★★ (3)	Use a concentration of 10 µg/ml. Perform heat mediated antigen retrieval before commencing with IHC staining protocol. Steam slides in 0.01 M sodium citrate buffer, pH 6.0 at 99-100°C for 20 minutes. Remove from heat and let stand at room temperature in buffer for 20 minutes. Rinse in 1X TBS with Tween (TBST) for 1 minute at RT.

ターゲット情報

機能	Antagonizes canonical Wnt signaling by inhibiting LRP5/6 interaction with Wnt and by forming a ternary complex with the transmembrane protein KREMEN that promotes internalization of LRP5/6. DKKs play an important role in vertebrate development, where they locally inhibit Wnt regulated processes such as antero-posterior axial patterning, limb development, somitogenesis and eye formation. In the adult, Dkks are implicated in bone formation and bone disease, cancer and Alzheimer disease.
組織特異性	Placenta.
配列類似性	Belongs to the dickkopf family.
ドメイン	The C-terminal cysteine-rich domain mediates interaction with LRP5 and LRP6.
細胞内局在	Secreted.

画像



ab61034 at 10µg/ml staining formalin fixed paraffin embedded Human Uterus (endometrium).

Immunohistochemistry (Formalin/PFA-fixed paraffin-embedded sections) - Anti-DKK1 antibody (ab61034)

Please note: All products are "FOR RESEARCH USE ONLY. NOT FOR USE IN DIAGNOSTIC PROCEDURES"

Our Abpromise to you: Quality guaranteed and expert technical support

- Replacement or refund for products not performing as stated on the datasheet
- Valid for 12 months from date of delivery
- Response to your inquiry within 24 hours

- We provide support in Chinese, English, French, German, Japanese and Spanish
- Extensive multi-media technical resources to help you
- We investigate all quality concerns to ensure our products perform to the highest standards

If the product does not perform as described on this datasheet, we will offer a refund or replacement. For full details of the Abpromise, please visit <https://www.abcam.co.jp/abpromise> or contact our technical team.

Terms and conditions

- Guarantee only valid for products bought direct from Abcam or one of our authorized distributors