


Anti-DIAPH2/DIA antibody ab12319

★★★★★ [1 Abreviews](#) [画像数 2](#)

製品の概要

製品名	Anti-DIAPH2/DIA antibody
製品の詳細	Rabbit polyclonal to DIAPH2/DIA
由来種	Rabbit
アプリケーション	適用あり: IHC-P, WB
種交差性	交差種: Human 交差が予測される動物種: Rabbit, Dog, Chimpanzee, Rhesus monkey, Gorilla, Orangutan, Elephant 
免疫原	<p>Synthetic peptide within Human DIAPH2/DIA aa 50-150. The exact immunogen sequence used to generate this antibody is proprietary information. If additional detail on the immunogen is needed to determine the suitability of the antibody for your needs, please contact our Scientific Support team to discuss your requirements.</p> <p>Database link: O60879</p>
ポジティブ・コントロール	WB: HEK-293T, HeLa and Jurkat whole cell lysates. IHC-P: Human testis tissue.
特記事項	<p>The Life Science industry has been in the grips of a reproducibility crisis for a number of years. Abcam is leading the way in addressing this with our range of recombinant monoclonal antibodies and knockout edited cell lines for gold-standard validation. Please check that this product meets your needs before purchasing.</p> <p>If you have any questions, special requirements or concerns, please send us an inquiry and/or contact our Support team ahead of purchase. Recommended alternatives for this product can be found below, along with publications, customer reviews and Q&As</p>

製品の特性

製品の状態	Liquid
保存方法	Shipped at 4°C. Upon delivery aliquot and store at -20°C. Avoid freeze / thaw cycles.
バッファー	<p>pH: 7</p> <p>Preservative: 0.1% Sodium azide</p> <p>Constituents: 0.021% PBS, 1.764% Sodium citrate, 1.815% Tris</p>
精製度	Immunogen affinity purified
特記事項(精製)	Purified using the peptide immobilized on solid support.
ポリ/モノ	ポリクローナル

アプリケーション

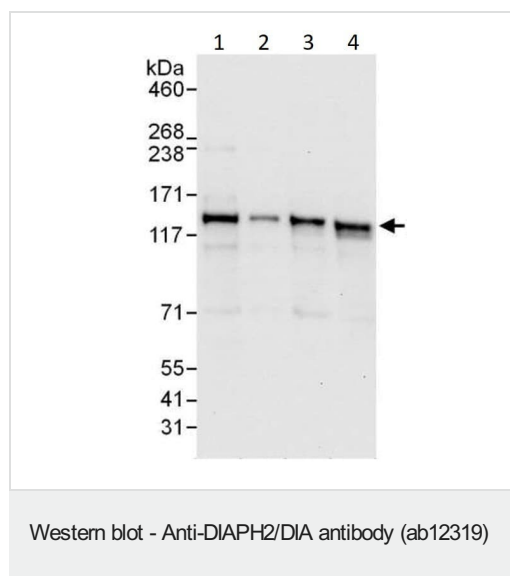
The Abpromise guarantee Abpromise保証は、次のテスト済みアプリケーションにおけるab12319の使用に適用されます
アプリケーションノートには、推奨の開始希釈率がありますが、適切な希釈率につきましてはご検討ください。

アプリケーション	Abreviews	特記事項
IHC-P		Use a concentration of 1 µg/ml. Perform heat mediated antigen retrieval with citrate buffer pH 6 before commencing with IHC staining protocol.
WB	★★★★★ (1)	1/1000 - 1/10000. Predicted molecular weight: 132 kDa.

ターゲット情報

機能	Could be involved in oogenesis. Involved in the regulation of endosome dynamics. Implicated in a novel signal transduction pathway, in which isoform 3 and CSK are sequentially activated by RHOD to regulate the motility of early endosomes through interactions with the actin cytoskeleton.
組織特異性	Expressed in testis, ovary, small intestine, prostate, lung, liver, kidney and leukocytes.
関連疾患	Defects in DIAPH2 are the cause of premature ovarian failure type 2A (POF2A) [MIM:300511]. An ovarian disorder defined as the cessation of ovarian function under the age of 40 years. It is characterized by oligomenorrhea or amenorrhea, in the presence of elevated levels of serum gonadotropins and low estradiol.
配列類似性	Belongs to the formin homology family. Diaphanous subfamily. Contains 1 DAD (diaphanous autoregulatory) domain. Contains 1 FH1 (formin homology 1) domain. Contains 1 FH2 (formin homology 2) domain. Contains 1 GBD/FH3 (Rho GTPase-binding/formin homology 3) domain.
発生段階	Expressed from E16 in ovary and testis and during P6-P16 during differentiation of ovarian follicles.
ドメイン	DRFs are regulated by intramolecular GBD-DAD binding where Rho-GTP activates the DRFs by disrupting the GBD-DAD interaction.
細胞内局在	Cytoplasm > cytosol. Early endosome. Isoform 3 is cytosolic but when coexpressed with RHOD, the 2 proteins colocalize to early endosomes.

画像



All lanes : Anti-DIAPH2/DIA antibody (ab12319) at 0.1 µg/ml

Lane 1 : HEK-293T (Human epithelial cell line from embryonic kidney transformed with large T antigen) whole cell lysate at 50 µg

Lane 2 : HEK-293T (Human epithelial cell line from embryonic kidney transformed with large T antigen) whole cell lysate at 15 µg

Lane 3 : HeLa (Human cervix adenocarcinoma epithelial cell) whole cell lysate at 50 µg

Lane 4 : Jurkat (Human T cell leukemia cell line from peripheral blood) whole cell lysate at 50 µg

Predicted band size: 132 kDa

Exposure time: 10 seconds

Immunohistochemistry (Formalin/PFA-fixed paraffin-embedded sections) - Anti-DIAPH2/DIA antibody (ab12319)

IHC image of ab12319 staining in human normal testis formalin fixed paraffin embedded tissue section, performed on a Leica Bond™ system using the standard protocol F. The section was pre-treated using heat mediated antigen retrieval with sodium citrate buffer (pH6, epitope retrieval solution 1) for 20 mins. The section was then incubated with ab12319, 1µg/ml, for 15 mins at room temperature and detected using an HRP conjugated compact polymer system. DAB was used as the chromogen. The section was then counterstained with haematoxylin and mounted with DPX.

For other IHC staining systems (automated and non-automated) customers should optimize variable parameters such as antigen retrieval conditions, primary antibody concentration and antibody incubation times.

Please note: All products are "FOR RESEARCH USE ONLY. NOT FOR USE IN DIAGNOSTIC PROCEDURES"

Our Abpromise to you: Quality guaranteed and expert technical support

- Replacement or refund for products not performing as stated on the datasheet
- Valid for 12 months from date of delivery

- Response to your inquiry within 24 hours
- We provide support in Chinese, English, French, German, Japanese and Spanish
- Extensive multi-media technical resources to help you
- We investigate all quality concerns to ensure our products perform to the highest standards

If the product does not perform as described on this datasheet, we will offer a refund or replacement. For full details of the Abpromise, please visit <https://www.abcam.co.jp/abpromise> or contact our technical team.

Terms and conditions

- Guarantee only valid for products bought direct from Abcam or one of our authorized distributors