


# Anti-Desmoplakin I+II antibody ab118804

**1 References**   **画像数 2**

### 製品の概要

製品名	Anti-Desmoplakin I+II antibody
製品の詳細	Rabbit polyclonal to Desmoplakin I+II
由来種	Rabbit
アプリケーション	<b>適用あり:</b> IHC-P, IP
種交差性	<b>交差種:</b> Human <b>交差が予測される動物種:</b> Rabbit, Chimpanzee, Rhesus monkey, Gorilla, Chinese hamster, Orangutan, Elephant 
免疫原	Synthetic peptide. This information is proprietary to Abcam and/or its suppliers.
ポジティブ・コントロール	IP: HeLa whole cell lysate; IHC: human prostate carcinoma
特記事項	<p>The Life Science industry has been in the grips of a reproducibility crisis for a number of years. Abcam is leading the way in addressing this with our range of recombinant monoclonal antibodies and knockout edited cell lines for gold-standard validation. Please check that this product meets your needs before purchasing.</p> <p>If you have any questions, special requirements or concerns, please send us an inquiry and/or contact our Support team ahead of purchase. Recommended alternatives for this product can be found below, along with publications, customer reviews and Q&amp;As</p>

### 製品の特性

製品の状態	Liquid
保存方法	Shipped at 4°C. Upon delivery aliquot and store at -20°C. Avoid freeze / thaw cycles.
バッファー	<p>pH: 7</p> <p>Preservative: 0.09% Sodium azide</p> <p>Constituent: 99% Tris citrate/phosphate</p> <p>pH 7 to 8</p>
精製度	Immunogen affinity purified
特記事項 (精製)	ab118804 was affinity purified using an epitope specific to Desmoplakin I+II immobilized on solid support.
ポリ/モノ	ポリクローナル

## アプリケーション

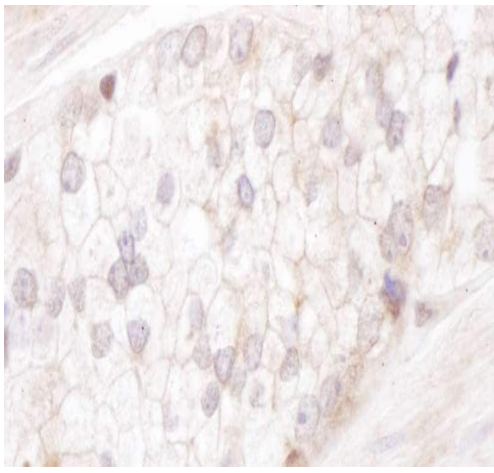
The Abpromise guarantee **Abpromise保証は、次のテスト済みアプリケーションにおけるab118804の使用に適用されます**  
 アプリケーションノートには、推奨の開始希釈率がありますが、適切な希釈率につきましてはご検討ください。

アプリケーション	Abreviews	特記事項
IHC-P		1/500 - 1/2000. Perform heat mediated antigen retrieval with citrate buffer pH 6 before commencing with IHC staining protocol.
IP		Use at 2-10 µg/mg of lysate.

## ターゲット情報

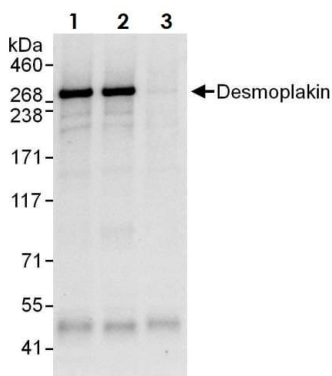
機能	Major high molecular weight protein of desmosomes. Involved in the organization of the desmosomal cadherin-plakoglobin complexes into discrete plasma membrane domains and in the anchoring of intermediate filaments to the desmosomes.
組織特異性	Isoform DPI is apparently an obligate constituent of all desmosomes. Isoform DPII resides predominantly in tissues and cells of stratified origin.
関連疾患	Keratoderma, palmoplantar, striate 2 Cardiomyopathy, dilated, with woolly hair and keratoderma Arrhythmogenic right ventricular dysplasia, familial, 8 Skin fragility-woolly hair syndrome Epidermolysis bullosa, lethal acantholytic Cardiomyopathy, dilated, with woolly hair, keratoderma, and tooth agenesis
配列類似性	Belongs to the plakins or cytolinker family. Contains 17 plectin repeats. Contains 1 SH3 domain. Contains 6 spectrin repeats.
ドメイン	Its association with epidermal and simple keratins is dependent on the tertiary structure induced by heterodimerization of these intermediate filaments proteins and most likely involves recognition sites located in the rod domain of these keratins. The N-terminal region is required for localization to the desmosomal plaque and interacts with the N-terminal region of plakophilin 1. The three tandem plakins repeat regions in the C-terminus mediate binding to intermediate filaments.
翻訳後修飾	Ser-2849 is probably phosphorylated by a cAMP-dependent protein kinase. Phosphorylation on Ser-2849 probably affects its association with epidermal, simple cytokeratins and VIM intermediate filaments. Substrate of transglutaminase. Some glutamines and lysines are cross-linked to other desmoplakin molecules, to other proteins such as keratin, envoplakin, periplakin and involucrin, and to lipids like omega-hydroxyceramide (PubMed:9651377).
細胞内局在	Cell junction, desmosome. Cytoplasm, cytoskeleton. Cell membrane. Innermost portion of the desmosomal plaque. Colocalizes with epidermal KRT5-KRT14 and simple KRT8-KRT18 keratins and VIM intermediate filaments network (PubMed:12802069). Localizes at the intercalated disk in

## 画像



Immunohistochemistry (Formalin/PFA-fixed paraffin-embedded sections) - Anti-Desmoplakin I+II antibody (ab118804)

Immunohistochemistry (Formalin/PFA-fixed paraffin-embedded sections) analysis of human prostate carcinoma tissue labelling Desmoplakin I+II with ab118804 at 1/1000 dilution. Heat mediated antigen retrieval performed with citrate buffer pH 6 before commencing with IHC staining protocol.



Immunoprecipitation - Anti-Desmoplakin I+II antibody (ab118804)

Desmoplakin I+II was immunoprecipitated from HeLa whole cell lysate (1 mg per IP reaction, 20% loaded) with ab118804 at 6 µg per reaction. Western blot was performed on the immunoprecipitate using a rabbit anti-Desmoplakin antibody which recognizes an upstream epitope at 1 µg/mL.

Lane 1: ab118804 IP in HeLa whole cell lysate.

Lane 2: rabbit anti-Desmoplakin antibody recognizing upstream epitope IP in HeLa whole cell lysate.

Lane 3: Control IgG in HeLa whole cell lysate.

Detection: Chemiluminescence with an exposure time of 10 seconds

**Please note:** All products are "FOR RESEARCH USE ONLY. NOT FOR USE IN DIAGNOSTIC PROCEDURES"

## Our Abpromise to you: Quality guaranteed and expert technical support

- Replacement or refund for products not performing as stated on the datasheet
- Valid for 12 months from date of delivery
- Response to your inquiry within 24 hours
- We provide support in Chinese, English, French, German, Japanese and Spanish

- Extensive multi-media technical resources to help you
- We investigate all quality concerns to ensure our products perform to the highest standards

If the product does not perform as described on this datasheet, we will offer a refund or replacement. For full details of the Abpromise, please visit <https://www.abcam.co.jp/abpromise> or contact our technical team.

#### **Terms and conditions**

---

- Guarantee only valid for products bought direct from Abcam or one of our authorized distributors